

Patient outcomes

Date ready for care to episode start

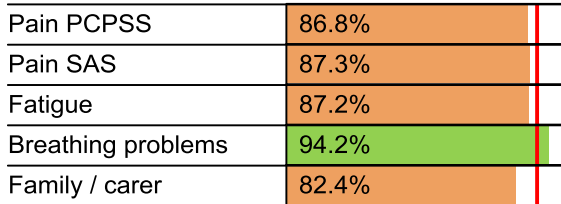


Time in unstable phase

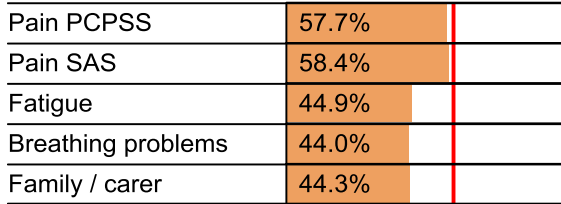


Symptoms & problems

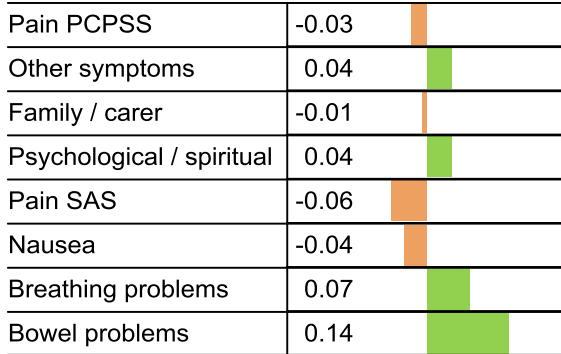
Anticipatory Care



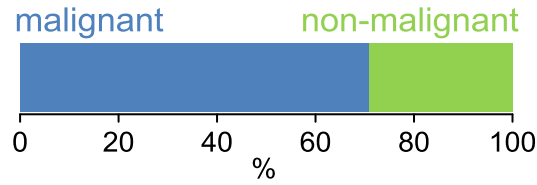
Responsive Care



Casemix adjusted outcomes



Diagnosis

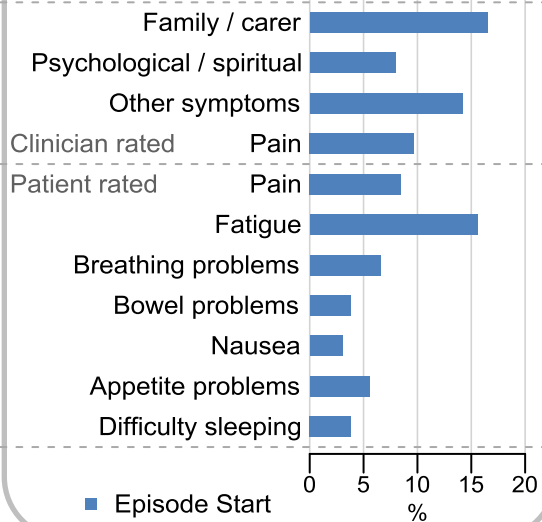


Age at episode start

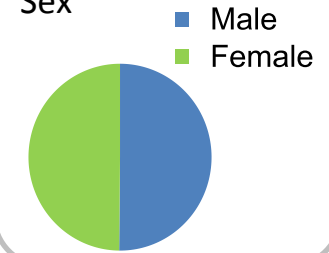
Mean: **74.0**
Median: **76.0**

Symptoms & problems

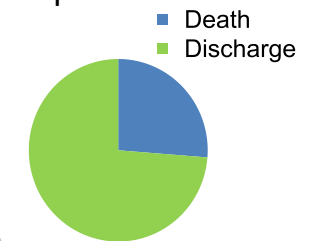
proportion of moderate / severe scores



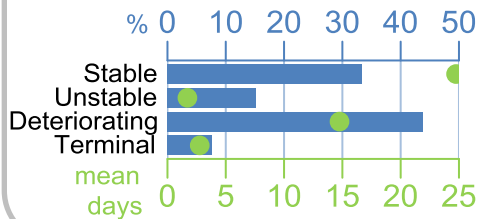
Sex



Episode end



Phase % and mean length in days

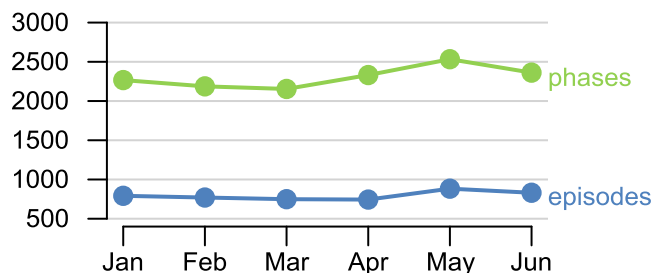


Phases per episode

2.3

Volume of data

Patients: **4,447**
Episodes: **5,841**
Phases: **13,834**



Episode length in days

Mean: **40.1**
Median: **28.0**

