

Patient outcomes

Date ready for care to episode start

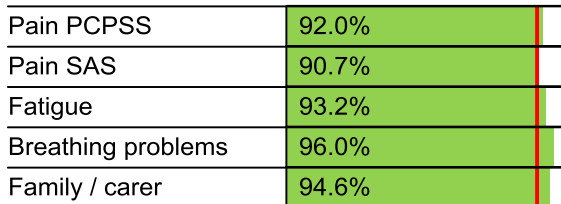


Time in unstable phase

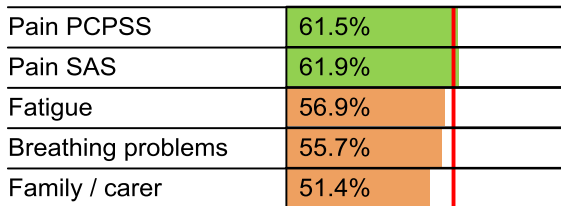


Symptoms & problems

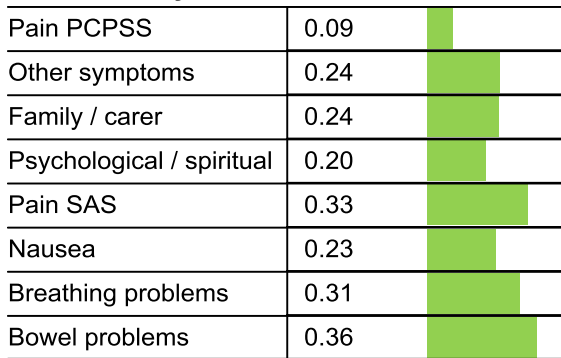
Anticipatory Care



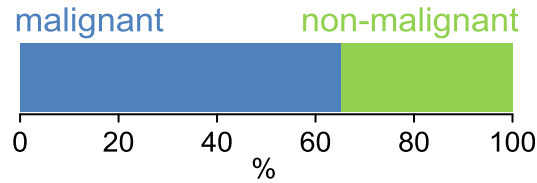
Responsive Care



Casemix adjusted outcomes



Diagnosis

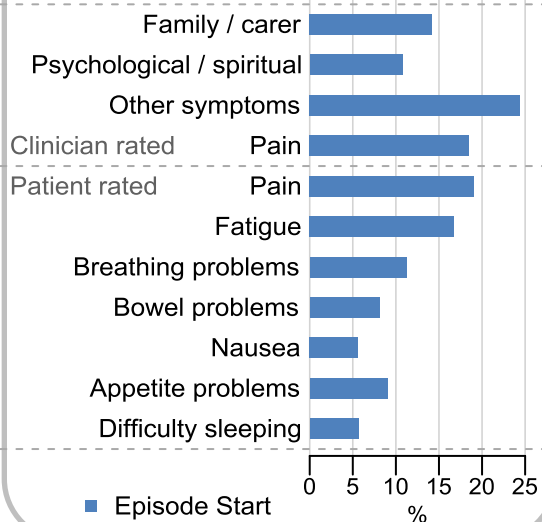


Age at episode start

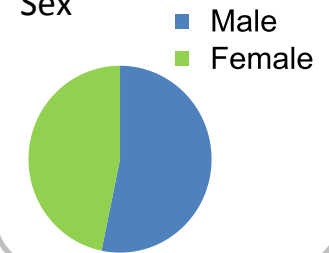
Mean: **75.0**
Median: **77.0**

Symptoms & problems

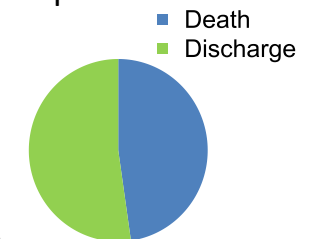
proportion of moderate / severe scores



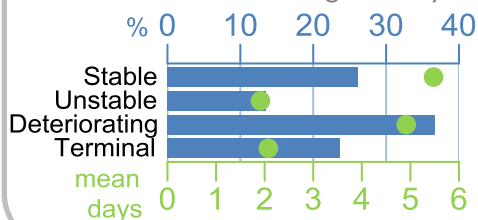
Sex



Episode end



Phase % and mean length in days

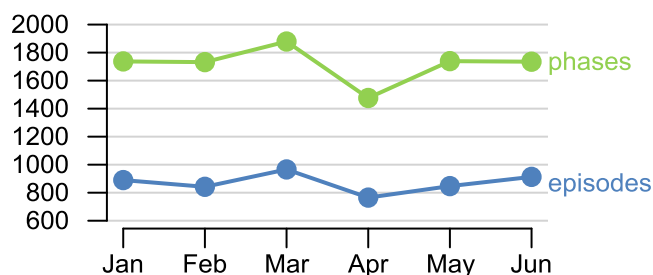


Phases per episode

1.9

Volume of data

Patients: **4,201**
Episodes: **5,301**
Phases: **10,299**



Episode length in days

Mean: **7.8**
Median: **4.0**

