

## Patient outcomes

### Date ready for care to episode start

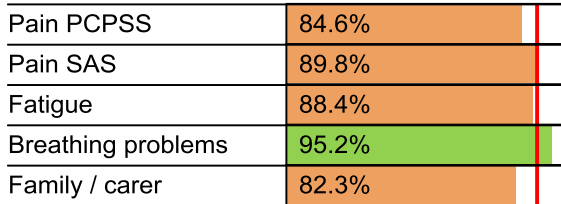


### Time in unstable phase

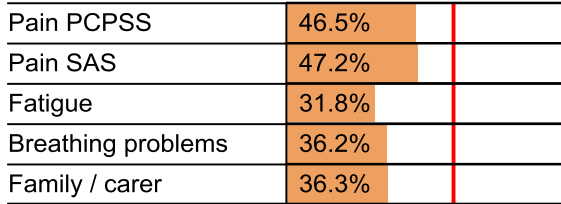


## Symptoms & problems

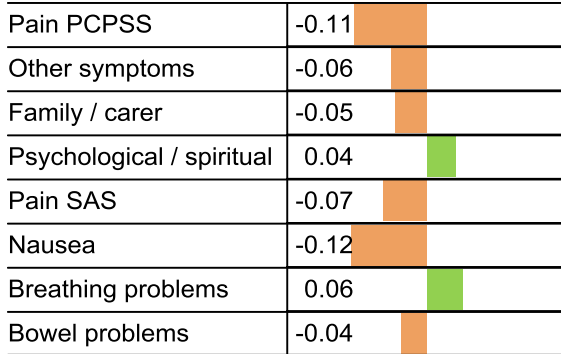
### Anticipatory Care



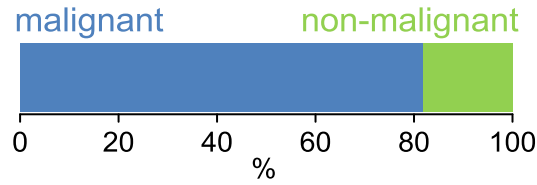
### Responsive Care



## Casemix adjusted outcomes



## Diagnosis

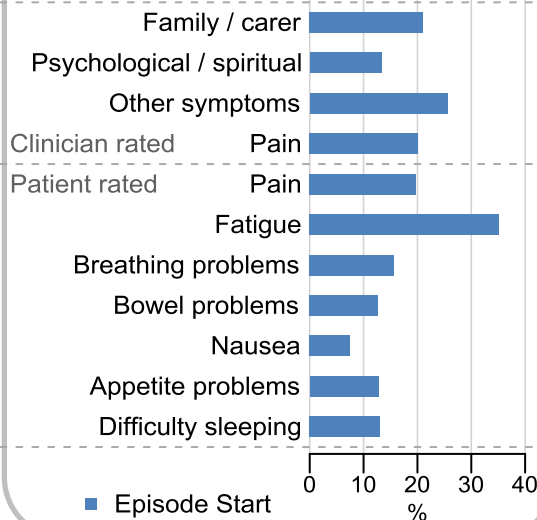


## Age at episode start

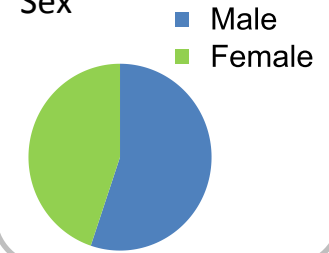
Mean: **73.0**  
Median: **74.0**

## Symptoms & problems

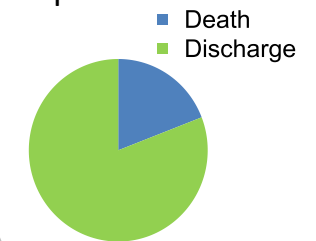
proportion of moderate / severe scores



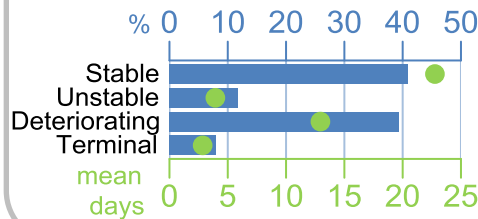
## Sex



## Episode end



## Phase % and mean length in days

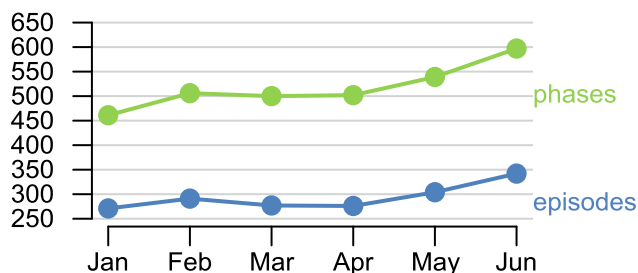


## Phases per episode

**1.6**

## Volume of data

Patients: **1,616**  
Episodes: **1,886**  
Phases: **3,105**



## Episode length in days

Mean: **31.4**  
Median: **18.0**

