

Patient outcomes

Date ready for care to episode start

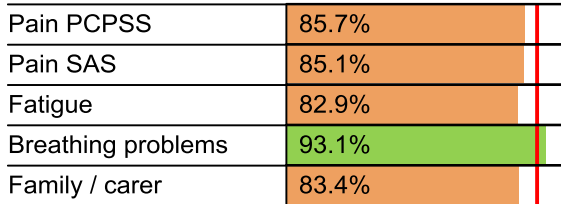


Time in unstable phase

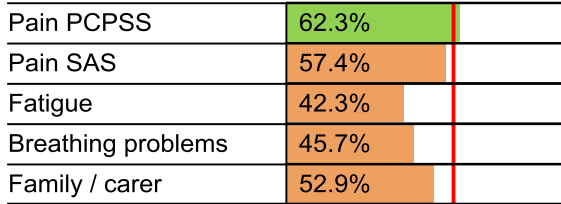


Symptoms & problems

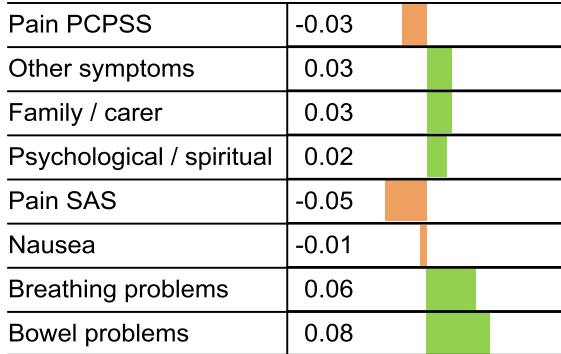
Anticipatory Care



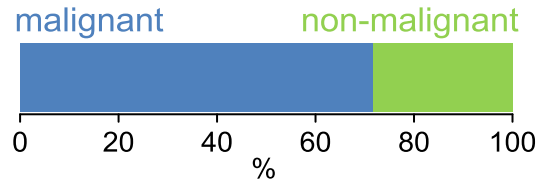
Responsive Care



Casemix adjusted outcomes



Diagnosis

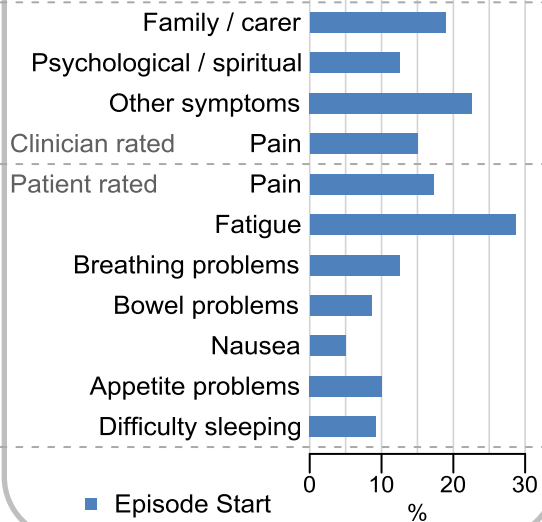


Age at episode start

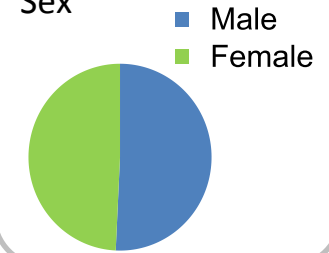
Mean: **74.2**
Median: **76.0**

Symptoms & problems

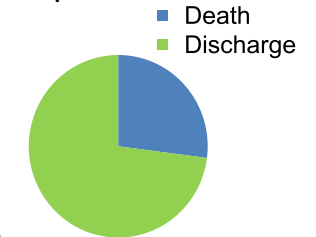
proportion of moderate / severe scores



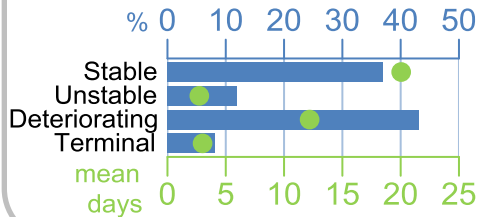
Sex



Episode end



Phase % and mean length in days



Phases per episode

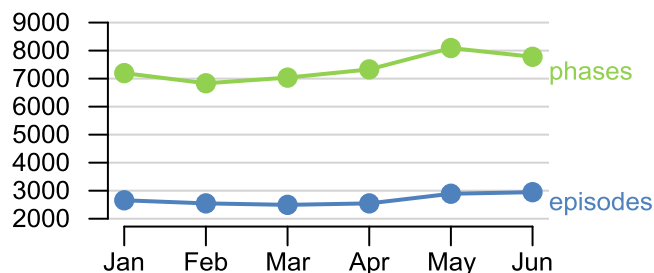
2.3

Volume of data

Patients: **15,002**

Episodes: **18,681**

Phases: **44,283**



Episode length in days

Mean: **36.3**
Median: **24.0**

