

Patient outcomes

Date ready for care to episode start

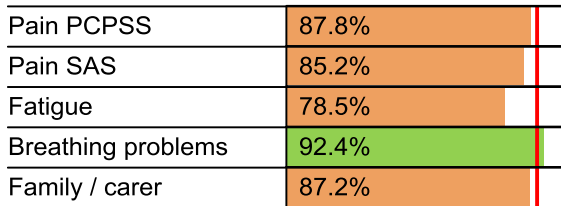


Time in unstable phase

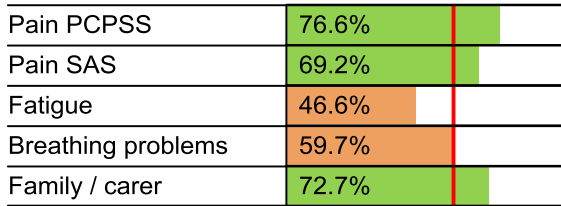


Symptoms & problems

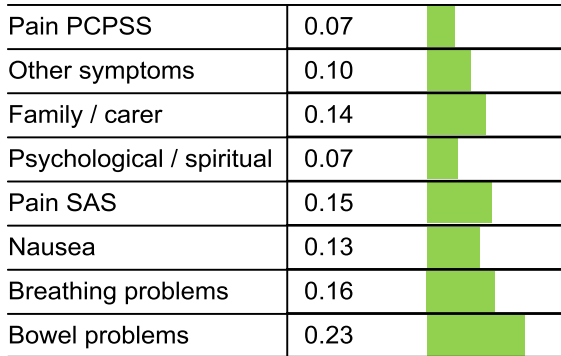
Anticipatory Care



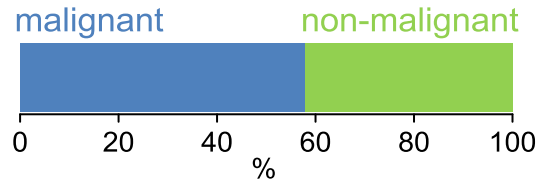
Responsive Care



Casemix adjusted outcomes



Diagnosis

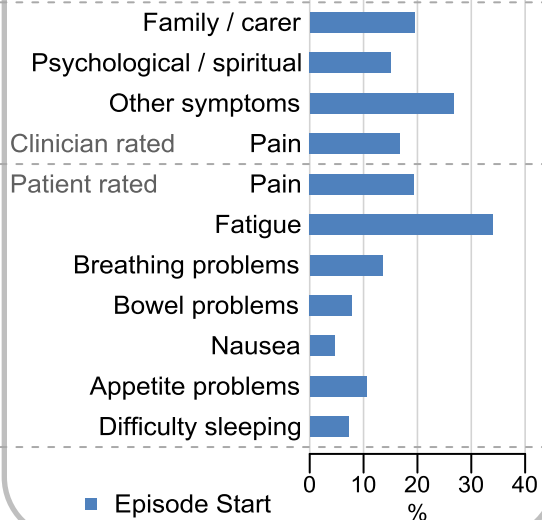


Age at episode start

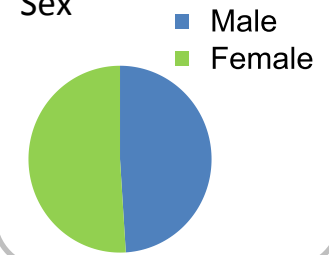
Mean: **75.7**
Median: **78.0**

Symptoms & problems

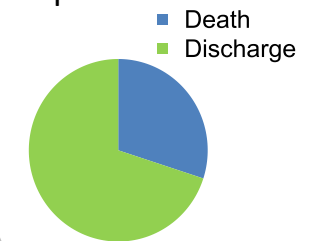
proportion of moderate / severe scores



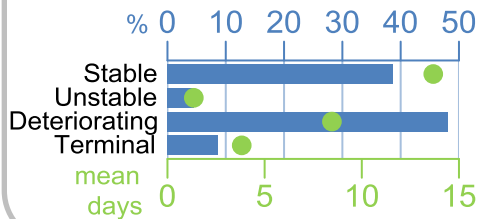
Sex



Episode end



Phase % and mean length in days

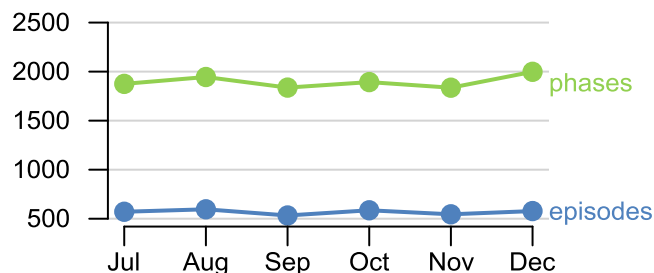


Phases per episode

2.6

Volume of data

Patients: **2,970**
Episodes: **3,834**
Phases: **11,384**



Episode length in days

Mean: **28.8**
Median: **18.0**

