

Patient outcomes

Date ready for care to episode start

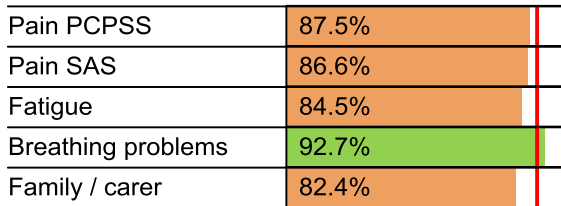


Time in unstable phase

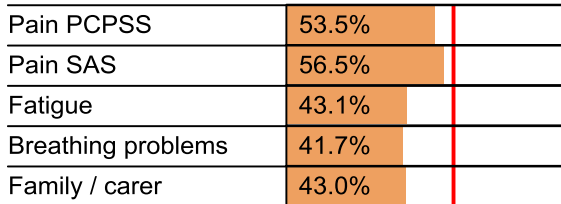


Symptoms & problems

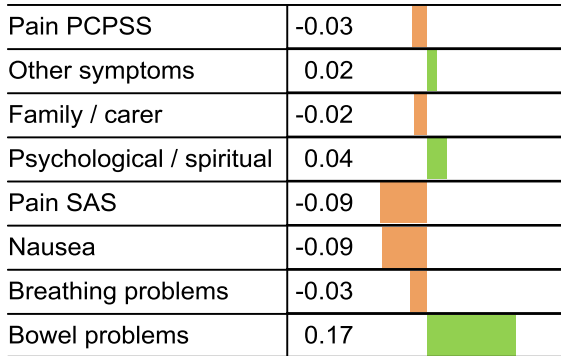
Anticipatory Care



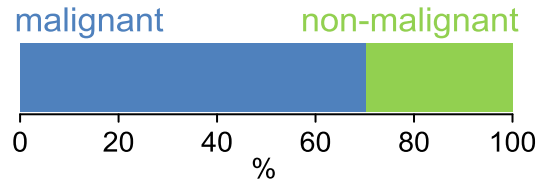
Responsive Care



Casemix adjusted outcomes



Diagnosis

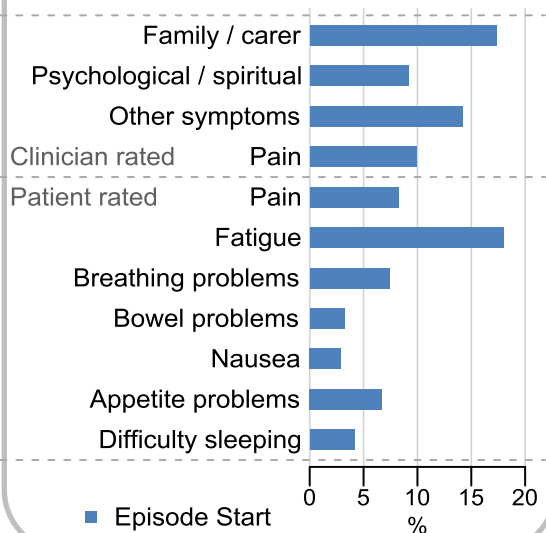


Age at episode start

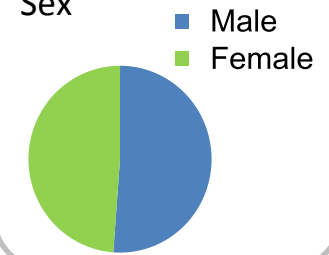
Mean: **73.7**
Median: **76.0**

Symptoms & problems

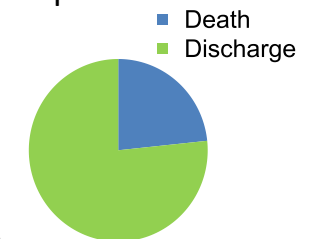
proportion of moderate / severe scores



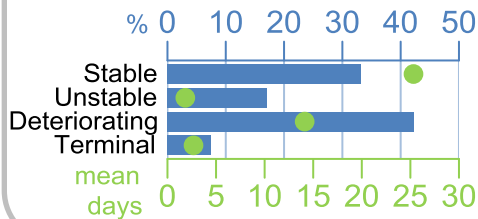
Sex



Episode end



Phase % and mean length in days

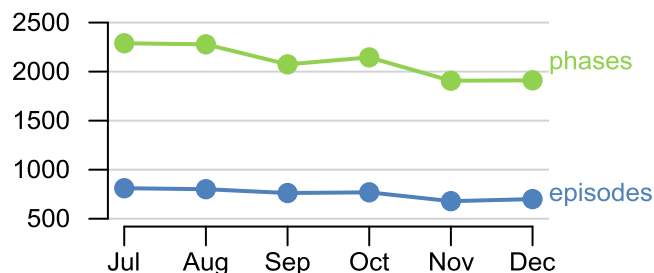


Phases per episode

2.2

Volume of data

Patients: **3,973**
Episodes: **5,321**
Phases: **12,604**



Episode length in days

Mean: **39.0**
Median: **26.0**

