

## Patient outcomes

### Date ready for care to episode start

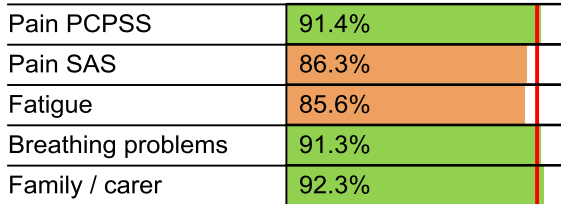


### Time in unstable phase

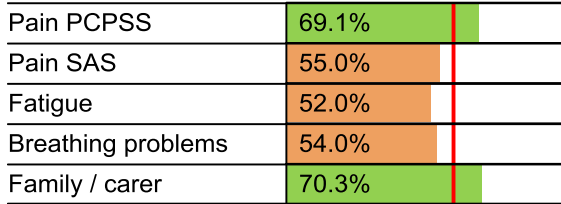


## Symptoms & problems

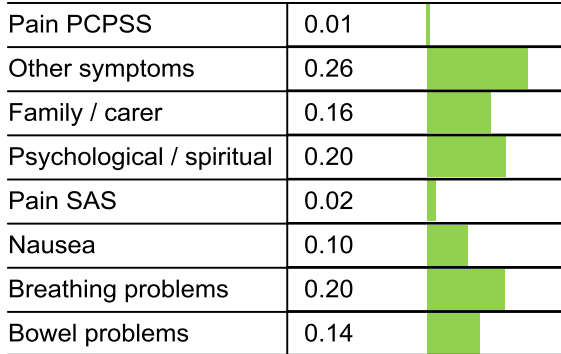
### Anticipatory Care



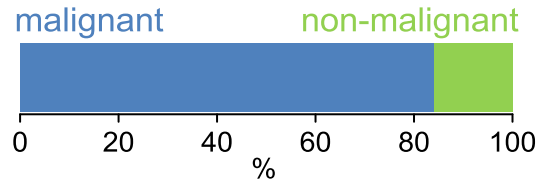
### Responsive Care



## Casemix adjusted outcomes



## Diagnosis

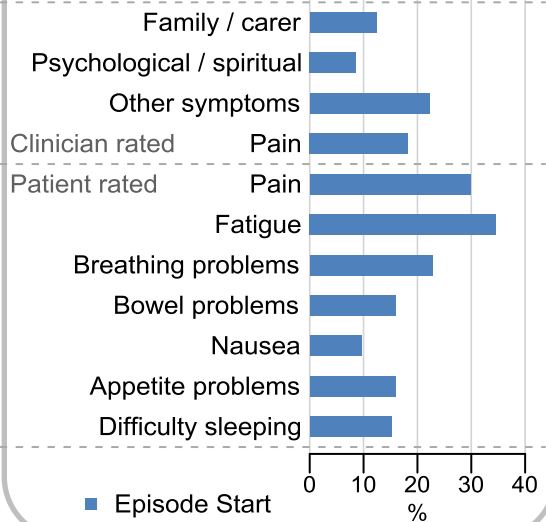


## Age at episode start

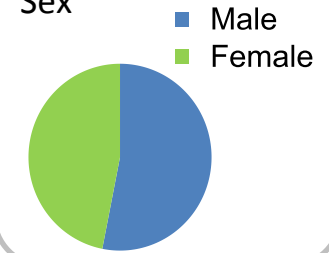
Mean: **71.5**  
Median: **73.0**

## Symptoms & problems

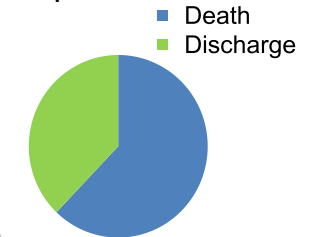
proportion of moderate / severe scores



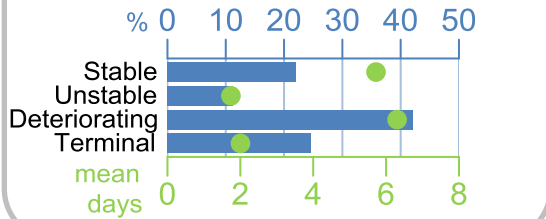
## Sex



## Episode end



## Phase % and mean length in days

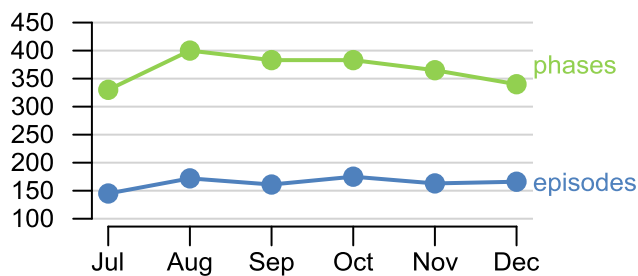


## Phases per episode

**2.2**

## Volume of data

Patients: **870**  
Episodes: **1,026**  
Phases: **2,201**



## Episode length in days

Mean: **9.4**  
Median: **5.0**

