

Patient outcomes

Date ready for care to episode start

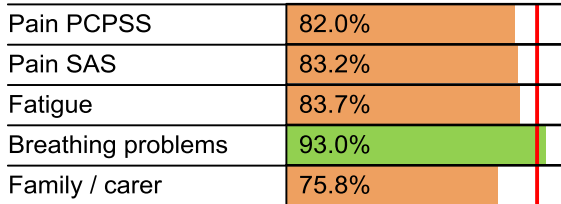


Time in unstable phase

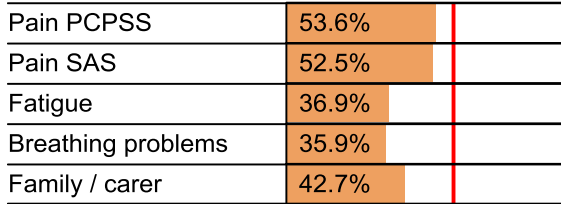


Symptoms & problems

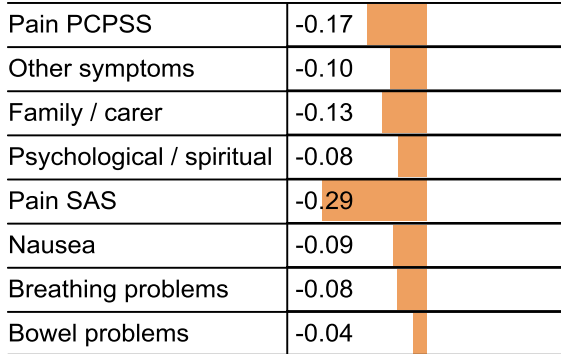
Anticipatory Care



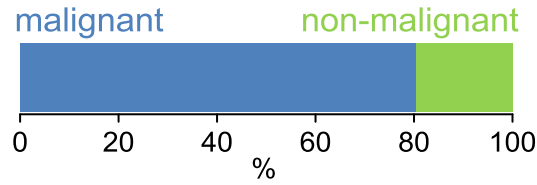
Responsive Care



Casemix adjusted outcomes



Diagnosis

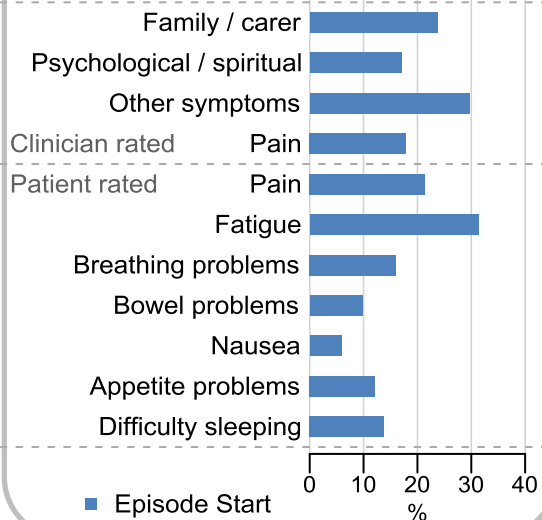


Age at episode start

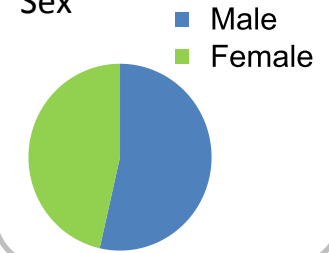
Mean: **72.5**
Median: **74.0**

Symptoms & problems

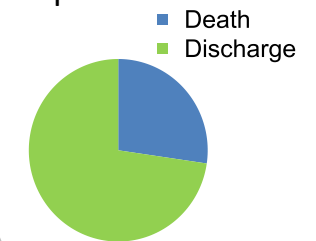
proportion of moderate / severe scores



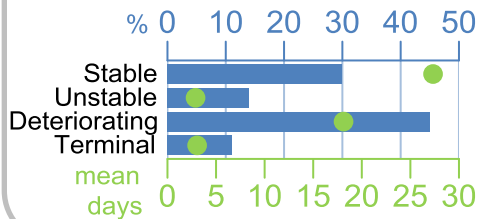
Sex



Episode end



Phase % and mean length in days

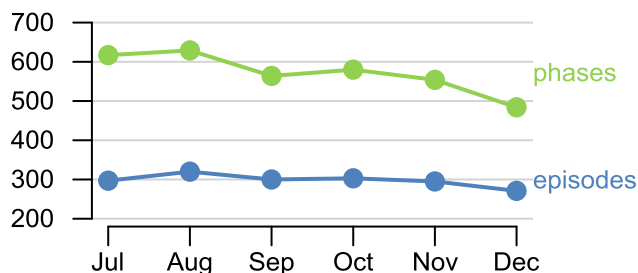


Phases per episode

1.7

Volume of data

Patients: **1,652**
Episodes: **1,963**
Phases: **3,428**



Episode length in days

Mean: **37.6**
Median: **27.0**

