

Patient outcomes

Date ready for care to episode start

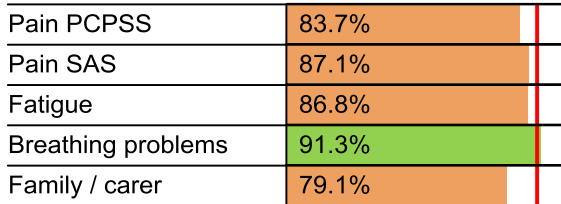


Time in unstable phase

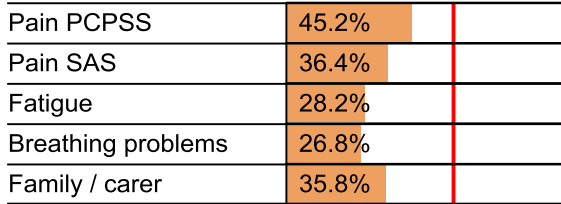


Symptoms & problems

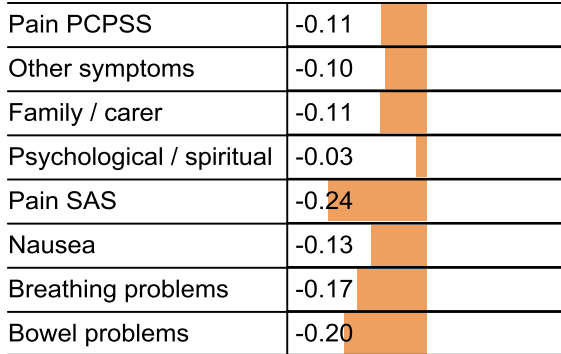
Anticipatory Care



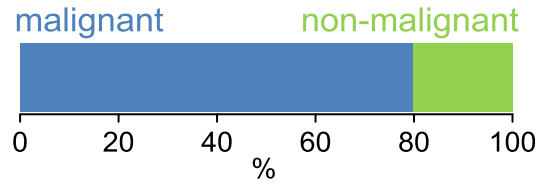
Responsive Care



Casemix adjusted outcomes



Diagnosis

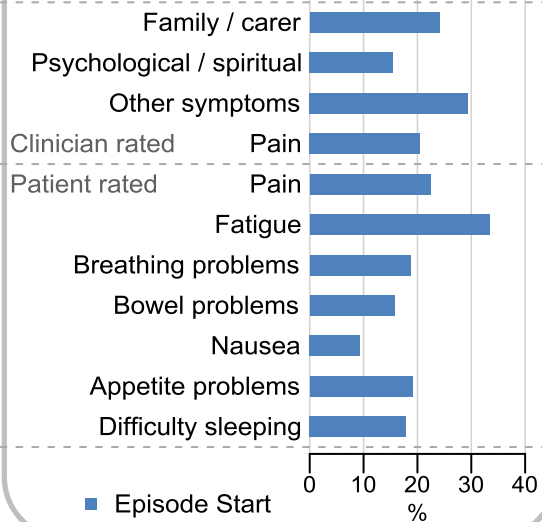


Age at episode start

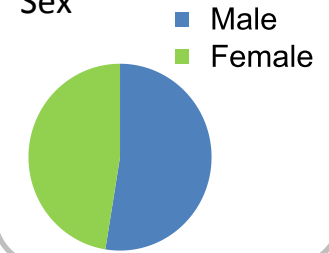
Mean: **72.0**
Median: **73.0**

Symptoms & problems

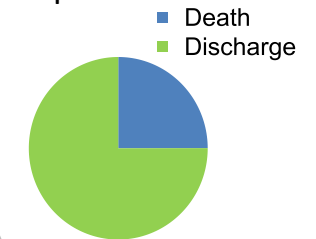
proportion of moderate / severe scores



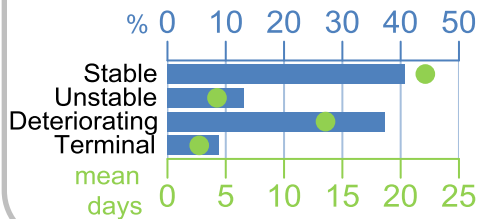
Sex



Episode end



Phase % and mean length in days

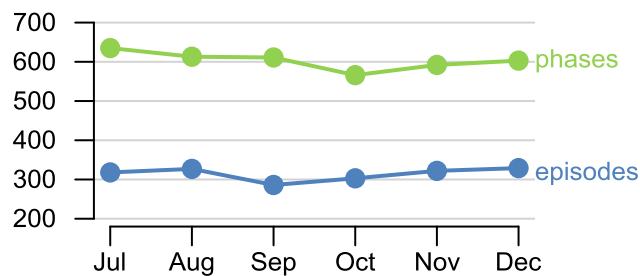


Phases per episode

1.8

Volume of data

Patients: **1,660**
Episodes: **1,998**
Phases: **3,620**



Episode length in days

Mean: **35.6**
Median: **22.0**

