

## Patient outcomes

### Date ready for care to episode start

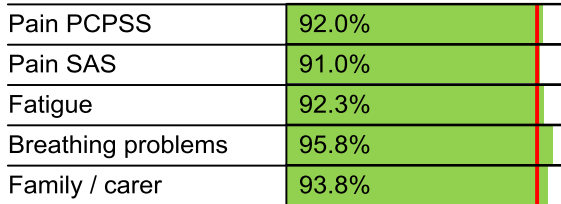


### Time in unstable phase

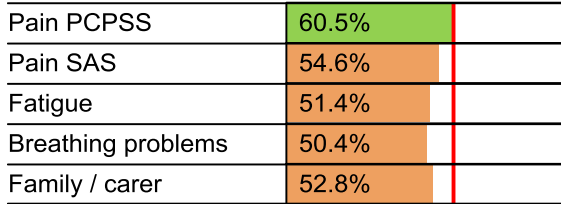


## Symptoms & problems

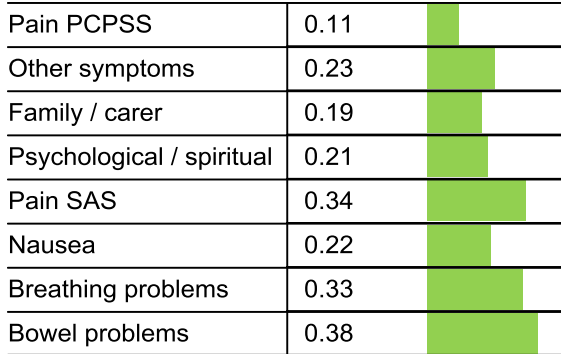
### Anticipatory Care



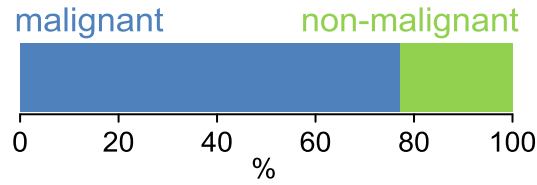
### Responsive Care



## Casemix adjusted outcomes



## Diagnosis

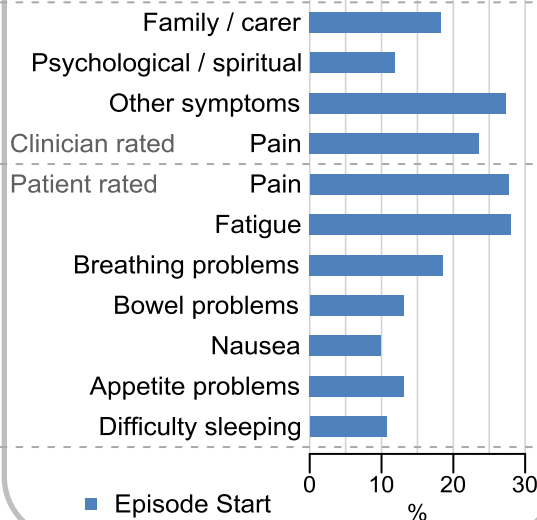


## Age at episode start

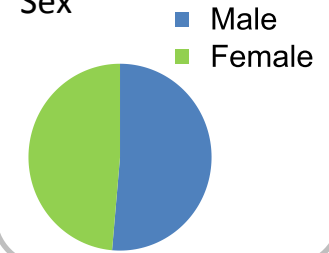
Mean: **73.6**  
Median: **75.0**

## Symptoms & problems

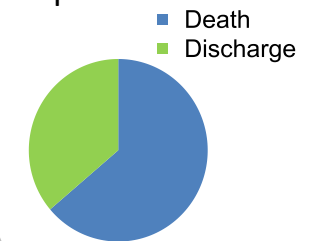
proportion of moderate / severe scores



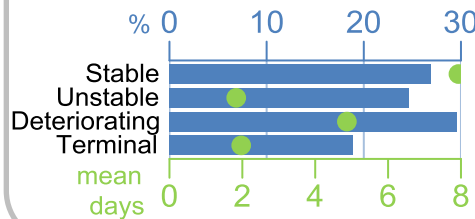
## Sex



## Episode end



## Phase % and mean length in days

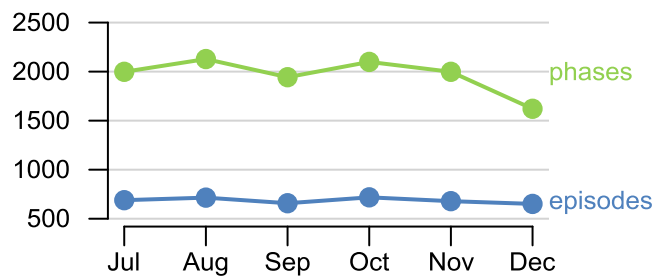


## Phases per episode

**2.8**

## Volume of data

Patients: **3,653**  
Episodes: **4,133**  
Phases: **11,787**



## Episode length in days

Mean: **12.9**  
Median: **8.0**

