

Patient outcomes

Date ready for care to episode start

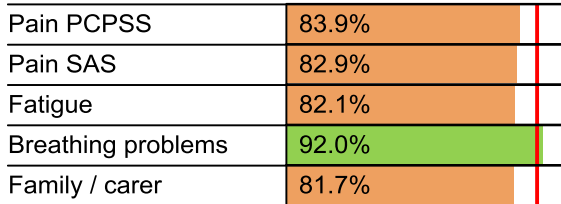


Time in unstable phase

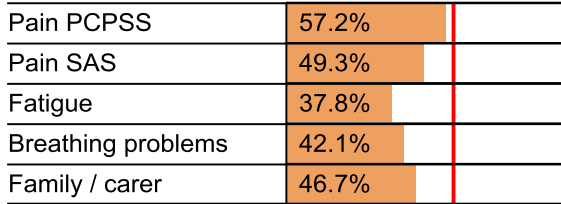


Symptoms & problems

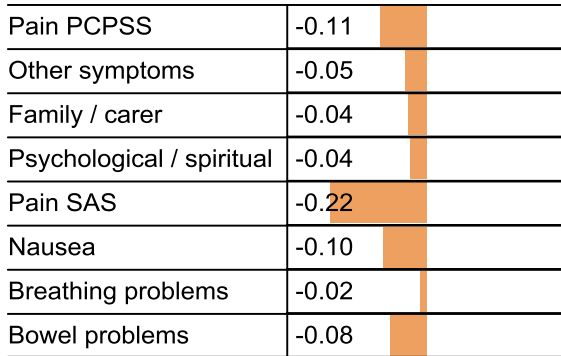
Anticipatory Care



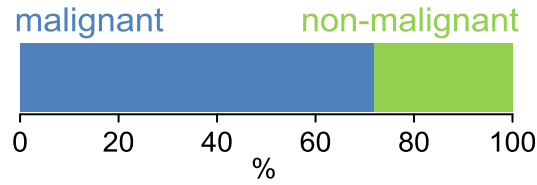
Responsive Care



Casemix adjusted outcomes



Diagnosis

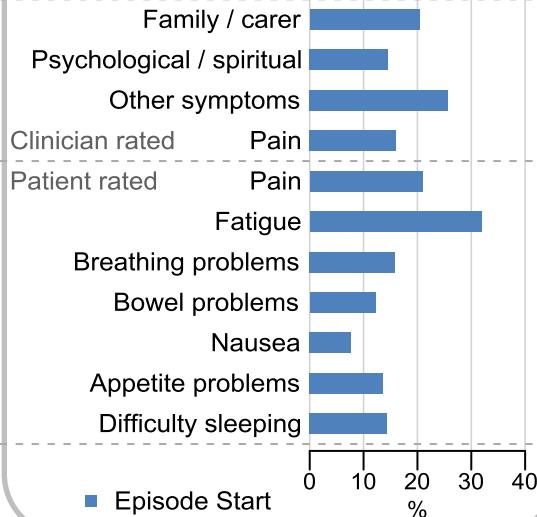


Age at episode start

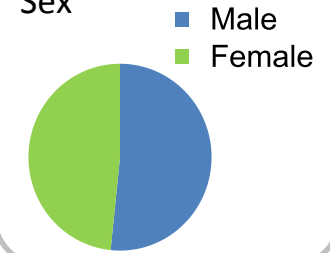
Mean: **73.3**
Median: **75.0**

Symptoms & problems

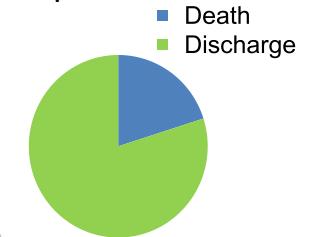
proportion of moderate / severe scores



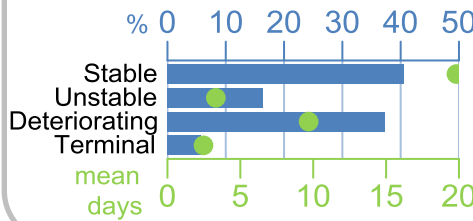
Sex



Episode end



Phase % and mean length in days

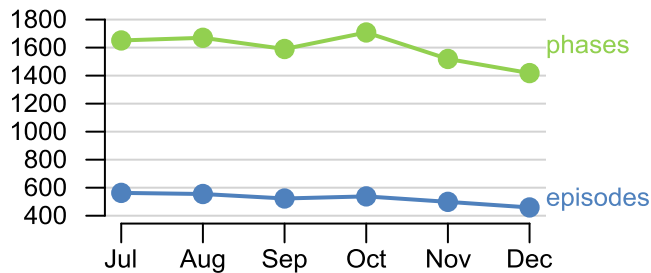


Phases per episode

2.5

Volume of data

Patients: **2,837**
Episodes: **3,605**
Phases: **9,556**



Episode length in days

Mean: **39.4**
Median: **28.0**

