

## Patient outcomes

### Date ready for care to episode start

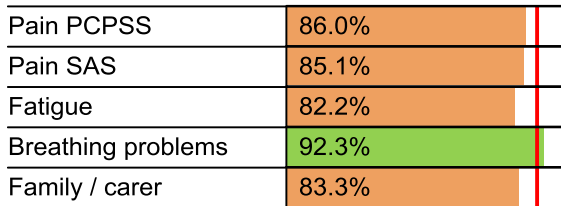


### Time in unstable phase

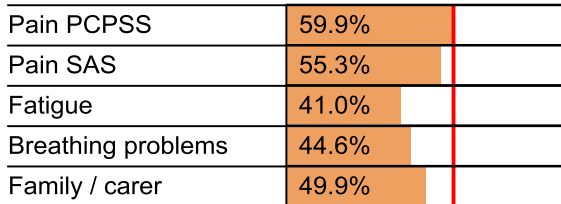


## Symptoms & problems

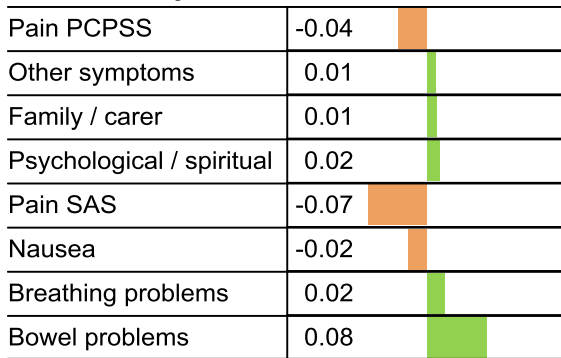
### Anticipatory Care



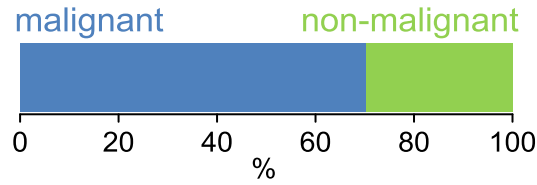
### Responsive Care



## Casemix adjusted outcomes



## Diagnosis

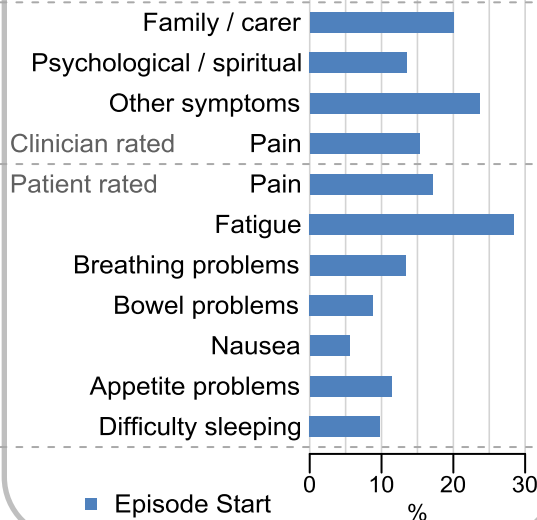


## Age at episode start

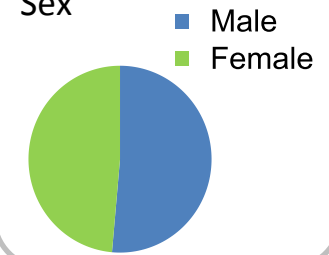
Mean: **73.7**  
Median: **75.0**

## Symptoms & problems

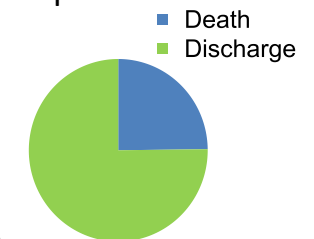
proportion of moderate / severe scores



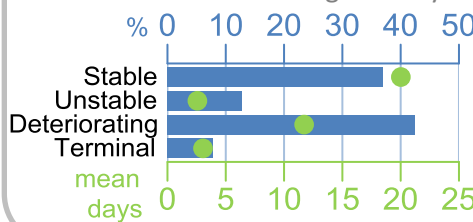
## Sex



## Episode end



## Phase % and mean length in days



## Phases per episode

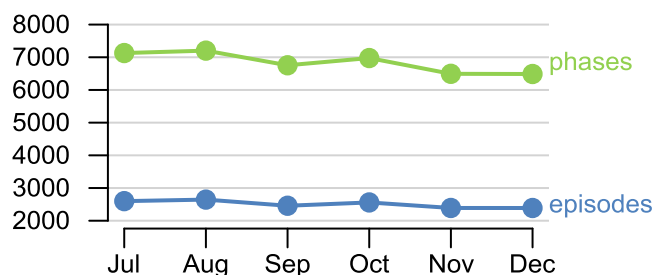
**2.2**

## Volume of data

Patients: **13,367**

Episodes: **17,048**

Phases: **41,057**



## Episode length in days

Mean: **35.8**

Median: **23.0**

