



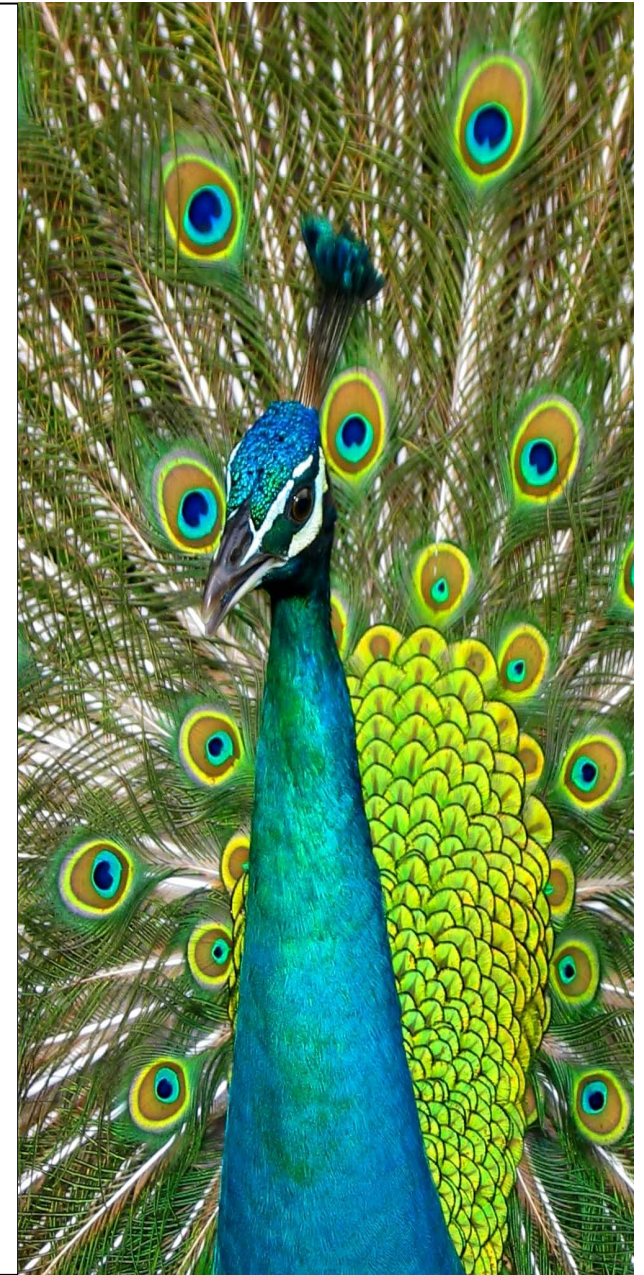
PCOC Report 9

South Australia

January to June 2010

August 2010

PCOC is funded under the *National Palliative Care Program* and is supported by the Australian Government Department of Health and Ageing.



Palliative Care Outcomes Collaboration (PCOC)

PCOC is a voluntary quality initiative to assist palliative care service providers to improve practice and is funded under the *National Palliative Care Program* and is supported by the Australian Government Department of Health and Ageing.

The aim of PCOC is to develop and support a national benchmarking system that will contribute to improved palliative care outcomes.

PCOC is a collaboration between four centres and is divided into four zones for the purpose of engaging with palliative care service providers.

The four PCOC zones and partners are:

Centre for Health Service Development, University of Wollongong – PCOC Central

WA Centre for Cancer & Palliative Care, Curtin University of Technology – PCOC West

Department of Palliative and Supportive Studies, Flinders University of South Australia – PCOC South

Institute of Health and Biomedical Innovation, Queensland University of Technology - PCOC North

Contact details for PCOC are available at <http://chsd.uow.edu.au/pcoc/>

Table of Contents

Introduction	1
Section 1 - Summary	
Data Summary	2
Summary of Benchmark Measures and Targets.....	3
Section 2 - Descriptive analysis	
Profile of palliative care patients	5
Profile of palliative care episodes	9
Profile of palliative care phases	18
Section 3 - Benchmark analysis	
Benchmark Measure 1 - Time from referral to first contact.....	27
Benchmark Measure 2 - Time in unstable phase.....	30
Benchmark Measure 3 - Change in pain.....	31
Benchmark Measure 4 - Change in symptoms relative to the national average.....	34
Appendix 1 - Services included in this report.....	36
Appendix 2 - Data consistency	40
Appendix 3 - Glossary.....	43
Acknowledgements.....	49

List of Tables

Table 1	Number and percentage of patients, episodes and phases - by episode type	2
Table 2	Summary of benchmark measures 1-3	4
Table 3	Summary of benchmark measure 4: Change in symptoms relative to the national average.....	4
Table 4	Indigenous status - all patients	5
Table 5	Sex - all patients	5
Table 6	Main language spoken at home - all patients	6
Table 7	Country of birth - all patients	7
Table 8	Primary diagnosis	8
Table 9	Number of episodes by age group - all episodes.....	9
Table 10	Referral source by episode type	10
Table 11	How episodes start and end - overnight admitted patients for SA	11
Table 12	How episodes start and end - overnight admitted patients for all services	12
Table 13	How episodes start and end - patients not admitted overnight	13
Table 14	Accommodation at episode start and end.....	14
Table 15	Level of support at episode start and end - all patients admitted from and discharged to private residence (home)	15
Table 16	Length of stay (LOS) summary - overnight admitted patients.....	16
Table 17	Length of stay (LOS) - overnight admitted patients	16
Table 18	Place of death - patients not admitted overnight.....	17
Table 19	Number of phases by phase type and episode type.....	18
Table 20	Average phase length (in days) by phase and episode type	18
Table 21	Profile of PC Problem Severity Scores (percentages) at beginning of phase by phase type - overnight admitted patients.....	21
Table 22	Profile of PC Problem Severity Scores (percentages) at beginning of phase by phase type - patients not admitted overnight.....	22
Table 23	Average Symptom Assessment Scores (SAS) at beginning of phase by phase type and episode type.....	23
Table 24	Karnofsky score at phase start by episode type	24
Table 25	Reason for phase end by phase and episode type.....	25

Table 26	Time from referral to first contact by episode start	27
Table 27	Time in unstable phase by episode type and occurrence of unstable phase	30
Table 28	(PCPSS) Patients with absent or mild pain at beginning of phase whose pain remained absent or mild at end of phase.....	31
Table 29	(PCPSS) Patients with moderate or severe pain at beginning of phase whose pain decreased to absent or mild at end of phase	31
Table 30	(SAS) Patients with absent or mild pain at beginning of phase whose pain remained absent or mild at end of phase.....	32
Table 31	(SAS) Patients with moderate or severe pain at beginning of phase whose pain decreased to absent or mild at end of phase	32
Table 32	Services providing data.....	36
Table 33	Data consistency - patient level items.....	40
Table 34	Data consistency - episode level items.....	41
Table 35	Data consistency - phase level items.....	42

List of Figures

Figure 1	Total RUG-ADL at beginning of phase – overnight admitted patients	19
Figure 2	Total RUG-ADL at beginning of phase – patients not admitted overnight	20
Figure 3	Phase outcomes by phase - all phases	26
Figure 4	Time from referral to first contact - overnight admitted patients	28
Figure 5	Time from referral to first contact – patients not admitted overnight.....	29
Figure 6	Change in pain benchmark measures - all phases.....	33
Figure 7	PCPSS Mean change adjusted for phase and symptom score at start of phase - SA	34
Figure 8	SAS Mean change adjusted for phase and symptom score at start of phase - SA	35

Introduction

The Palliative Care Outcomes Collaboration (PCOC) was established in mid-2005 and is funded under the National Palliative Care Program and is supported by the Australian Government Department of Health and Ageing. It is a voluntary, quality initiative which aims to assist palliative care services to measure the standard and quality of care which is a stated goal of the National Palliative Care Strategy.

The current PCOC dataset (Version 2) evolved after consultation with services and approval by PCOC's Scientific and Clinical Advisory Committee (SCAC) and went live on 1 July 2007. The dataset includes the clinical assessment tools - Phase of Care, PC Problem Severity Score (PCPSS), Symptom Assessment Scale (SAS), Australian-modified Karnofsky and RUG-ADL – which provide measures of quality and outcomes of care. PCOC provides analysis of each service's data and compares this to the national data. Four benchmark measures are now also routinely included in each report.

For this PCOC Report 9, 97 palliative care services submitted data and 95 are included in this report. The reporting period is January to June 2010.

Please note

- Data reported for services identifying as consultancy are included in the overnight admitted data analysis, with the exception of data reported for services identifying as outpatient or community consultancy which are included in the not admitted overnight data analysis.
- In addition, interpret all figures carefully as results may appear distorted due to low frequencies being represented as percentages.
- Some tables throughout the report may be incomplete. This is because some items may not be applicable to a particular service or it may be due to data quality issues. Please use the following key when interpreting the tables:

na The item is not applicable

u The item was unavailable or unable to be calculated due to missing or invalid data.

Section 1 - Summary

Data Summary

This report includes data from a total of 95 services. During the reporting period data were provided for a total of 10579 patients, with 12852 episodes and 27280 phases.

These total numbers are determined by a data scoping method. This method looks at the phase level data first and includes all phases that ended within the current reporting period. The associated episodes and patients are then determined. As a consequence, it is possible that not all phases within any particular episode are included in this report, so the average number of phases per episode calculation may be an underestimate (for episodes that cross-over 2 or more reporting periods) as it only includes phases that ended within the current reporting period.

Table 1 *Number and percentage of patients, episodes and phases - by episode type*

Episode type	Overnight admitted		Not admitted overnight		Total	
	SA	All Services	SA	All Services	SA	All Services
Number of patients*	619	7200	465	4005	957	10579
Number of episodes	784	8294	493	4558	1277	12852
Number of phases	1682	18841	854	8439	2536	27280
Percentage of patients*	64.7	68.1	48.6	37.9	100	100
Percentage of episodes	61.4	64.5	38.6	35.5	100	100
Percentage of phases	66.3	69.1	33.7	30.9	100	100
Average number of episodes per patient	1.4	1.2	1.3	1.2	1.3	1.2
Average number of phases per episode**	2.1	2.3	1.7	1.8	2.0	2.1

* Patients seen in both an overnight admitted and not admitted overnight setting are only counted once in the Total column and hence numbers/percentages may not add to the total.

** Average number of phases per episode is only calculated for closed episodes.

Summary of Benchmark Measures and Targets

Beginning in the reporting period January to June 2009 (Report 7), PCOC introduced four benchmark measures into the routine PCOC reports.

Measure	Benchmark
1. Time from referral to first contact	90% contacted on the same day or the following day
2. Time in unstable phase	85% in their first phase remain unstable for less than 7 days 90% in a subsequent phase remain unstable for less than 7 days The median time in unstable phase is 2 days or less
3. Change in pain (both PCPSS and SAS)	90% with absent/mild pain at phase start remaining with absent/mild pain at phase end 60% with moderate/severe pain at phase start with absent/mild pain at phase end
4. Change in symptoms relative to the national average (8 symptoms are included)	0 or above

Targets of 10% improvement have been agreed to apply to all services not meeting the current benchmarks. For example if your service does not meet the 90% benchmark for Measure 1 then your target is to achieve an improvement of 10% over the next reporting period. Therefore, if you score 75% for Measure 1 in this report, your target is to score at least 82.5% for this measure in the next report which is a 10% improvement.

The following two tables provide a summary of the performance of your service in relation to the four benchmark measures for the period January to June 2010.

Table 2 Summary of benchmark measures 1-3

Measure	Description	Benchmark	Benchmark met (SA score)			
			Overnight admitted		Not admitted overnight	
1. Time from referral to contact	Patients contacted on same or following day	90%	No	(88.9%)	No	(64.1%)
2. Time in unstable phase	Patients unstable less than 7 days - first phase	85%	Yes	(91.5%)	No	(50.0%)
	Patients unstable less than 7 days - subsequent phase	90%	Yes	(92.3%)	No	(46.1%)
	Median time in unstable phase	2 days or less	Yes	(2 days)	No	(7 days)
3. Change in pain						
PC Problem Severity Score (PCPSS)	Patients with absent/mild pain at phase start remaining absent/mild at phase end	90%	No	(75.4%)	No	(71.5%)
	Patients with moderate/severe pain at phase start with absent/mild at phase end	60%	No	(45.0%)	Yes	(60.2%)
Symptom Assessment Score (SAS)	Patients with absent/mild pain at phase start remaining absent/mild at phase end	90%	No	(73.7%)	No	(72.6%)
	Patients with moderate/severe pain at phase start with absent/mild at phase end	60%	No	(41.5%)	No	(41.7%)

Table 3 Summary of benchmark measure 4: Change in symptoms relative to the national average

Symptom	Benchmark	Benchmark met	SA score
PC PSS	Pain	0 or above	Yes (0.07)
	Other symptoms	0 or above	Yes (0.21)
	Family/carer	0 or above	Yes (0.09)
	Psychological/spiritual	0 or above	Yes (0.10)
SAS	Pain	0 or above	No (-0.04)
	Nausea	0 or above	Yes (0.16)
	Breathing	0 or above	Yes (0.20)
	Bowels	0 or above	No (-0.10)

Section 2 - Descriptive analysis

Profile of palliative care patients

Table 4 *Indigenous Status - all patients*

Indigenous Status	SA	All Services
Aboriginal but not Torres Strait Islander origin	8	104
Torres Strait Islander but not Aboriginal origin	0	15
Both Aboriginal and Torres Strait Islander origin	4	14
Neither Aboriginal nor Torres Strait Islander origin	891	9980
Not stated/inadequately described	54	466
Total	957	10579

Table 5 *Sex - all patients*

Sex	SA	%	All Services	%
Male	500	52.2	5701	53.9
Female	457	47.8	4871	46.0
Not stated/inadequately described	0	0.0	7	0.1
Total	957	100.0	10579	100.0

Table 6 *Main language spoken at home - all patients*

Main language spoken at home	SA	%	All Services	%
English	840	87.8	9045	85.5
Italian	15	1.6	198	1.9
Greek	5	0.5	88	0.8
Cantonese	0	0.0	49	0.5
Croatian	0	0.0	38	0.4
Arabic (including Lebanese)	1	0.1	34	0.3
Macedonian	1	0.1	33	0.3
Vietnamese	3	0.3	31	0.3
Maltese	1	0.1	30	0.3
Spanish	0	0.0	30	0.3
Mandarin	0	0.0	28	0.3
Polish	3	0.3	24	0.2
Turkish	0	0.0	18	0.2
Serbian	0	0.0	15	0.1
German	2	0.2	13	0.1
All other languages	11	1.1	213	2.0
Not stated/inadequately described	75	7.8	692	6.5
Total	957	100.0	10579	100.0

Note: The most common 15 languages from all services are reported separately, all other languages have been grouped together to form the category *All other languages*.

Table 7 Country of birth - all patients

Country of birth	SA	%	All Services	%
Australia	551	57.6	6698	63.3
England	63	6.6	807	7.6
Italy	29	3.0	339	3.2
Scotland	17	1.8	176	1.7
New Zealand	7	0.7	169	1.6
Greece	6	0.6	137	1.3
Netherlands	9	0.9	107	1.0
Germany	13	1.4	105	1.0
China	0	0.0	93	0.9
Poland	11	1.1	73	0.7
Malta	3	0.3	63	0.6
Croatia	1	0.1	63	0.6
Ireland	2	0.2	59	0.6
India	5	0.5	59	0.6
Vietnam	4	0.4	45	0.4
All other countries	47	4.9	862	8.1
Not stated/inadequately described	189	19.7	724	6.8
Total	957	100.0	10579	100.0

Note: The most common 15 countries from all services are reported separately, all other countries have been grouped together to form the category *All other countries*.

Table 8 Primary diagnosis

Primary diagnosis		SA	%	All services	%
Malignant	Bone and soft tissue	15	1.8	233	2.8
	Breast	57	6.9	628	7.5
	CNS	14	1.7	164	2.0
	Colorectal	104	12.6	899	10.8
	Gynaecological	44	5.3	448	5.4
	Haematological	60	7.3	433	5.2
	Head and neck	40	4.8	451	5.4
	Lung	203	24.6	1579	18.9
	Pancreas	62	7.5	510	6.1
	Prostate	41	5.0	519	6.2
	Skin	28	3.4	335	4.0
	Other GIT	79	9.6	667	8.0
	Other urological	38	4.6	318	3.8
	Other malignancy	18	2.2	499	6.0
	Unknown primary	22	2.7	209	2.5
	Malignant - not further defined	0	0.0	470	5.6
	<i>All malignant</i>	<i>825</i>	<i>100.0</i>	<i>8362</i>	<i>100.0</i>
Non-malignant	Cardiovascular	29	22.5	304	18.4
	HIV/AIDS	1	0.8	15	0.9
	Kidney failure	12	9.3	185	11.2
	Neurological disease	23	17.8	278	16.8
	Respiratory failure	21	16.3	227	13.7
	Other non-malignancy	43	33.3	350	21.1
	Non-malignant - not further defined	0	0.0	297	17.9
	<i>All non-malignant</i>	<i>129</i>	<i>100.0</i>	<i>1656</i>	<i>100.0</i>

Note: All patients where diagnosis was Not stated/inadequately described are excluded from the table.

Profile of palliative care episodes

The 10579 patients from all services seen in the six month period had a total of 12852 episodes of palliative care. These episodes included inpatient, community and consultative episodes. For example, a patient who received both inpatient and community (home-based) palliative care during the period is generally counted as two episodes.

Episode level activity is presented below by 10 year age groups. The average age for all patients in South Australia during this period was 71 years and for all services was 70 years.

Table 9 Number of episodes by age group - all episodes

Age group	SA	%	All Services	%
< 15	4	0.3	52	0.4
15-24	2	0.2	41	0.3
25-34	7	0.5	100	0.8
35-44	25	2.0	418	3.3
45-54	115	9.0	1210	9.4
55-64	238	18.6	2351	18.3
65-74	334	26.2	3215	25.0
75-84	364	28.5	3696	28.8
85+	188	14.7	1765	13.7
Not stated/inadequately described	0	0.0	4	0.0
Total	1277	100.0	12852	100.0

Referral source refers to the service or organisation from which the patient was referred to for each individual episode of care. The following table presents referral source by episode type.

Table 10 Referral source by episode type

Referral source	Overnight admitted				Not admitted overnight			
	SA	%	All Services	%	SA	%	All Services	%
Public hospital - other than inpatient palliative care unit	320	40.8	3333	40.2	240	48.7	1857	40.7
Self, carer(s), family or friends	17	2.2	163	2.0	11	2.2	143	3.1
Private hospital - other than inpatient palliative care unit	79	10.1	735	8.9	54	11.0	397	8.7
Public palliative care inpatient unit/hospice	27	3.4	151	1.8	22	4.5	305	6.7
Private palliative care inpatient unit/hospice	16	2.0	40	0.5	4	0.8	40	0.9
General Medical Practitioner rooms	30	3.8	595	7.2	70	14.2	893	19.6
Specialist Medical Practitioner rooms	13	1.7	389	4.7	53	10.8	274	6.0
Community-based palliative care agency	188	24.0	1492	18.0	11	2.2	128	2.8
Community-based service	12	1.5	356	4.3	8	1.6	92	2.0
Residential aged care facility	17	2.2	71	0.9	15	3.0	111	2.4
Other	2	0.3	220	2.7	4	0.8	133	2.9
Not stated/inadequately described	63	8.0	749	9.0	1	0.2	185	4.1
Total	784	100.0	8294	100.0	493	100.0	4558	100.0

Table 11 *How episodes start and end - overnight admitted patients for SA*

Mode of episode start	Mode of episode end					Total
	Discharged to usual accommodation	Discharged to interim accommodation	Discharged to another hospital	Death	All other reasons**	
Admitted from usual accommodation	216	10	41	289	18	574
Admitted from other than usual accommodation	4	0	0	7	1	12
Admitted (transferred) from another hospital	14	2	1	111	1	129
Admitted (transferred) from acute care in other ward	5	2	0	52	0	59
All other reasons*	1	0	0	2	1	4
Total	240	14	42	461	21	778
As a percentage of each start mode						
Admitted from usual accommodation	37.6	1.7	7.1	50.3	3.1	100.0
Admitted from other than usual accommodation	33.3	0.0	0.0	58.3	8.3	100.0
Admitted (transferred) from another hospital	10.9	1.6	0.8	86.0	0.8	100.0
Admitted (transferred) from acute care in other ward	8.5	3.4	0.0	88.1	0.0	100.0
All other reasons*	25.0	0.0	0.0	50.0	25.0	100.0
Total	30.8	1.8	5.4	59.3	2.7	100.0

Note: All episodes where episode start mode or episode end mode was Not stated/inadequately described are excluded from the table. Episodes that remain open at the end of the reporting period (and hence do not have an episode end date) are also excluded.

* Includes: Change from acute care to palliative care while remaining on same ward; Change of sub-acute/non-acute care type; Statistical admission from leave.

** Includes: Change from palliative care to acute care - different ward; Change from palliative care to acute care - same ward; Discharged at own risk.

Table 12 *How episodes start and end - overnight admitted patients for all services*

Mode of episode start	Mode of episode end					Total
	Discharged to usual accommodation	Discharged to interim accommodation	Discharged to another hospital	Death	All other reasons**	
Admitted from usual accommodation	2000	168	405	2406	175	5154
Admitted from other than usual accommodation	36	14	15	52	10	127
Admitted (transferred) from another hospital	293	59	134	1459	66	2011
Admitted (transferred) from acute care in other ward	125	7	29	456	15	632
All other reasons*	20	1	1	55	6	83
Total	2474	249	584	4428	272	8007
As a percentage of each start mode						
Admitted from usual accommodation	38.8	3.3	7.9	46.7	3.4	100.0
Admitted from other than usual accommodation	28.3	11.0	11.8	40.9	7.9	100.0
Admitted (transferred) from another hospital	14.6	2.9	6.7	72.6	3.3	100.0
Admitted (transferred) from acute care in other ward	19.8	1.1	4.6	72.2	2.4	100.0
All other reasons*	24.1	1.2	1.2	66.3	7.2	100.0
Total	30.9	3.1	7.3	55.3	3.4	100.0

Note: All episodes where episode start mode or episode end mode was Not stated/inadequately described are excluded from the table. Episodes that remain open at the end of the reporting period (and hence do not have an episode end date) are also excluded.

* Includes: Change from acute care to palliative care while remaining on same ward; Change of sub-acute/non-acute care type; Statistical admission from leave.

** Includes: Change from palliative care to acute care - different ward; Change from palliative care to acute care - same ward; Discharged at own risk.

Table 13 How episodes start and end - patients not admitted overnight

Mode of episode start	Mode of episode end					Total
	Discharged/ case closure	Admitted for inpatient palliative care	Admitted for inpatient acute care	Transfer for primary care	Death	
SA						
New referral	20	91	140	8	170	429
Transfer from being an o/n PC patient	1	18	22	0	13	54
Total	21	109	162	8	183	483
As a percentage of each start mode						
New referral	4.7	21.2	32.6	1.9	39.6	100.0
Transfer from being an o/n PC patient	1.9	33.3	40.7	0.0	24.1	100.0
Total	4.3	22.6	33.5	1.7	37.9	100.0
All services						
New referral	686	728	681	57	1130	3282
Transfer from being an o/n PC patient	72	156	151	12	164	555
Total	758	884	832	69	1294	3837
As a percentage of each start mode						
New referral	20.9	22.2	20.7	1.7	34.4	100.0
Transfer from being an o/n PC patient	13.0	28.1	27.2	2.2	29.5	100.0
Total	19.8	23.0	21.7	1.8	33.7	100.0

Note: All episodes where episode start mode or episode end mode was Not stated/inadequately described are excluded from the table. Episodes that remain open at the end of the reporting period (and hence do not have an episode end date) are also excluded.

Table 14 Accommodation at episode start and end

Accommodation at episode start	Accommodation at episode end				
	Private residence	Low level care	High level care	All other	Total
SA					
Private residence	229	3	14	15	261
Residential aged care (low level care)	0	2	2	0	4
Residential aged care (high level care)	1	1	16	0	18
All other	2	0	0	1	3
Total	232	6	32	16	286
As a percentage of each start accommodation					
Private residence	87.7	1.1	5.4	5.7	100.0
Residential aged care (low level care)	0.0	50.0	50.0	0.0	100.0
Residential aged care (high level care)	5.6	5.6	88.9	0.0	100.0
All other	66.7	0.0	0.0	33.3	100.0
Total	81.1	2.1	11.2	5.6	100.0
All services					
Private residence	2473	20	98	279	2870
Residential aged care (low level care)	5	25	17	8	55
Residential aged care (high level care)	9	4	137	13	163
All other	69	3	10	91	173
Total	2556	52	262	391	3261
As a percentage of each start accommodation					
Private residence	86.2	0.7	3.4	9.7	100.0
Residential aged care (low level care)	9.1	45.5	30.9	14.5	100.0
Residential aged care (high level care)	5.5	2.5	84.0	8.0	100.0
All other	39.9	1.7	5.8	52.6	100.0
Total	78.4	1.6	8.0	12.0	100.0

Note: All episodes where accommodation at episode start or end was Not stated/inadequately described are excluded from the table. Episodes that ended in death and episodes that remain open at the end of the reporting period (and hence do not have an episode end date) are also excluded. The all other category includes: Community group home; Boarding house; Transitional living unit.

Table 15 Level of support at episode start and end - all patients admitted from and discharged to private residence (home)

Level of support at episode start	Level of support at episode end				Total
	Without support (lives alone)	Without support (lives with others)	With support (lives alone or with others)	Other arrangements	
SA					
Without support (lives alone)	9	0	10	0	19
Without support (lives with others)	0	6	14	0	20
With support (lives alone or with others)	3	4	180	0	187
Other arrangements	0	0	0	0	0
Total	12	10	204	0	226
As a percentage of each start support					
Without support (lives alone)	47.4	0.0	52.6	0.0	100.0
Without support (lives with others)	0.0	30.0	70.0	0.0	100.0
With support (lives alone or with others)	1.6	2.1	96.3	0.0	100.0
Other arrangements	na	na	na	na	na
Total	5.3	4.4	90.3	0.0	100.0
All services					
Without support (lives alone)	44	4	106	0	154
Without support (lives with others)	2	51	117	1	171
With support (lives alone or with others)	7	30	1922	5	1964
Other arrangements	0	0	0	1	1
Total	53	85	2145	7	2290
As a percentage of each start support					
Without support (lives alone)	28.6	2.6	68.8	0.0	100.0
Without support (lives with others)	1.2	29.8	68.4	0.6	100.0
With support (lives alone or with others)	0.4	1.5	97.9	0.3	100.0
Other arrangements	0.0	0.0	0.0	100.0	100.0
Total	2.3	3.7	93.7	0.3	100.0

Note: All episodes where level of support at episode start or end was Not stated/inadequately described are excluded from the table. Episodes that ended in death and episodes that remain open at the end of the reporting period (and hence do not have an episode end date) are also excluded.

Table 16 *Length of Stay (LOS) summary - overnight admitted patients*

Length of stay	SA	All services
Average length of episode	11.1	11.9
Median length of episode	7	7
Average number of phases per episode	2.1	2.3

Note: Bereavement phase records are excluded and episodes that remain open at the end of the reporting period (and hence do not have an episode end date), are also excluded. In addition, any records where LOS was greater than 90 days were considered to be outliers and are excluded from the average calculations.

Table 17 *Length of Stay (LOS) - overnight admitted patients*

Length of stay	SA	%	All Services	%
Same day	37	4.8	298	3.7
1-2 days	139	17.9	1497	18.8
3-4 days	113	14.5	1067	13.4
5-7 days	112	14.4	1242	15.6
8-14 days	184	23.7	1632	20.5
15-21 days	80	10.3	859	10.8
22-30 days	46	5.9	570	7.2
31-60 days	59	7.6	606	7.6
61-90 days	7	0.9	109	1.4
Greater than 90 days	1	0.1	72	0.9
Total	778	100.0	7952	100.0

Note: Bereavement phase records are excluded and episodes that remain open at the end of the reporting period (and hence do not have an episode end date), are also excluded.

Table 18 *Place of death - patients not admitted overnight*

Place of death	SA	%	All Services	%
Private residence	91	49.7	759	58.1
Residential aged care setting	48	26.2	178	13.6
Other location*	39	21.3	227	17.4
Not stated/inadequately described	5	2.7	143	10.9
Total	183	100.0	1307	100.0

* Includes patients who have died in a hospital setting without the episode of non-admitted palliative care being ended. Patients whose community episode is ended when admitted to hospital are excluded from this table (see Tables 11 and 12).

Profile of palliative care phases

Table 19 Number of phases by phase type and episode type

Phase	Overnight admitted				Not admitted overnight			
	SA	%	All services	%	SA	%	All services	%
Stable	473	28.1	4447	23.6	348	40.7	2758	32.7
Unstable	387	23.0	5809	30.8	143	16.7	1754	20.8
Deteriorating	521	31.0	4716	25.0	300	35.1	2896	34.3
Terminal	286	17.0	3090	16.4	62	7.3	806	9.6
Bereaved	15	0.9	779	4.1	1	0.1	225	2.7
All phases	1682	100.0	18841	100.0	854	100.0	8439	100.0

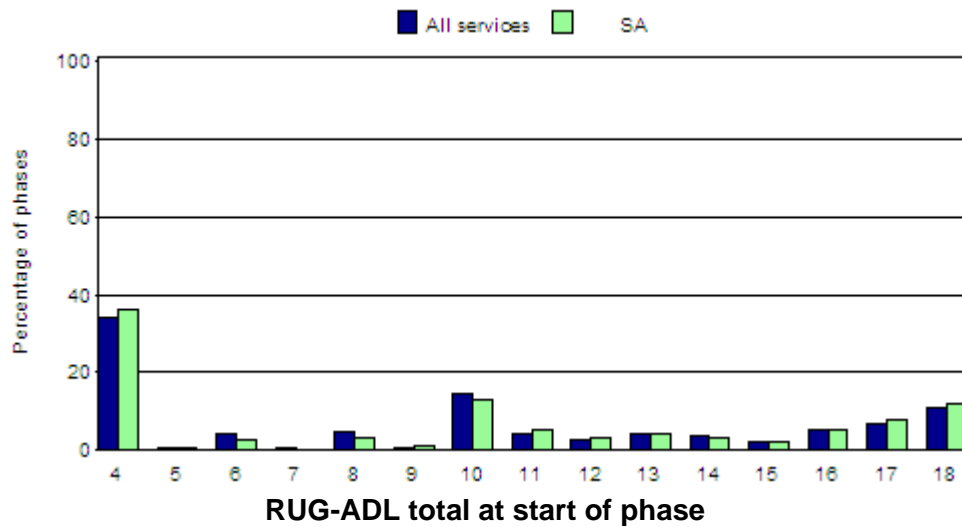
Table 20 Average phase length (in days) by phase and episode type

Phase	Overnight admitted		Not admitted overnight	
	SA	All services	SA	All services
Stable	7.9	7.8	30.2	22.0
Unstable	3.4	5.6	14.0	11.2
Deteriorating	5.9	5.9	17.8	17.1
Terminal	2.0	2.2	5.8	3.2
Bereaved	1.5	1.3	4.0	3.0

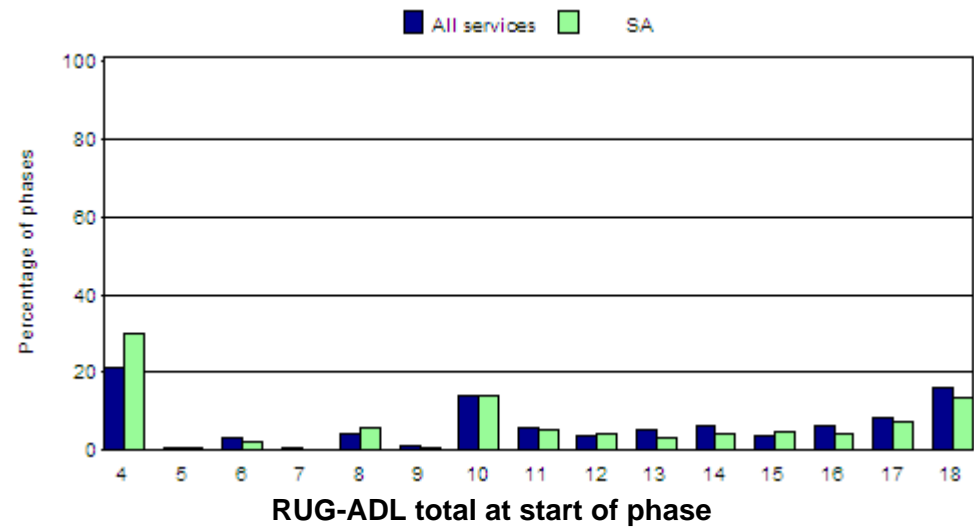
Note: Phase records where length of phase was greater than 90 days were considered to be outliers and are excluded from the average calculations.

Figure 1 Total RUG-ADL at beginning of phase – overnight admitted patients

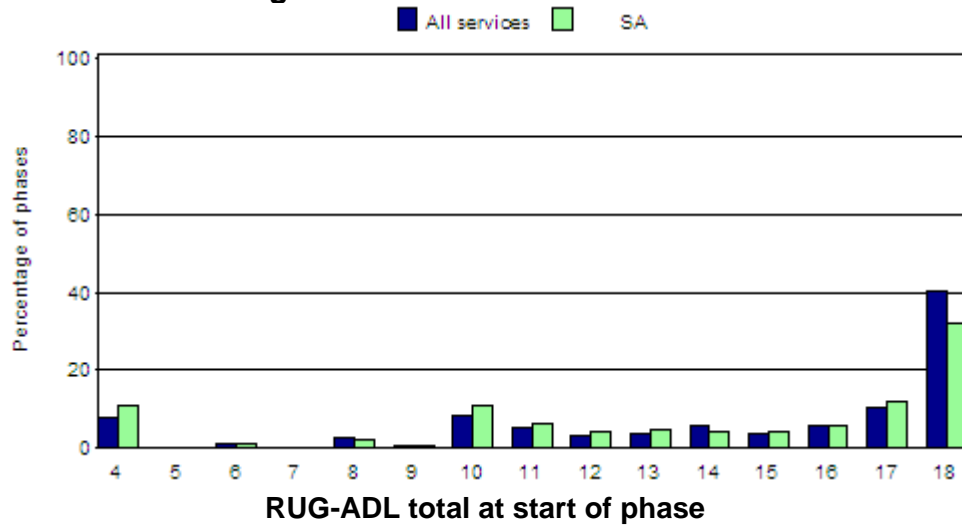
Stable Phase



Unstable Phase



Deteriorating Phase



Terminal Phase

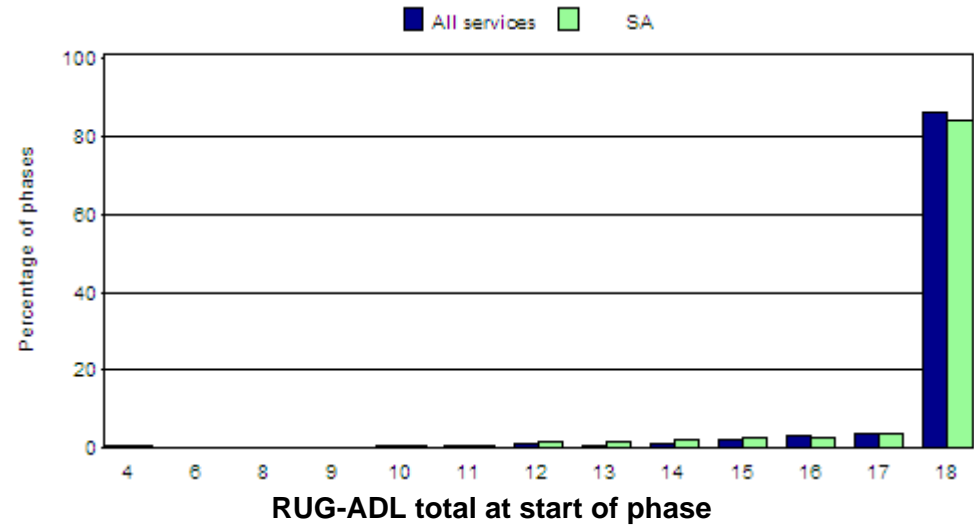


Figure 2 Total RUG-ADL at beginning of phase – patients not admitted overnight

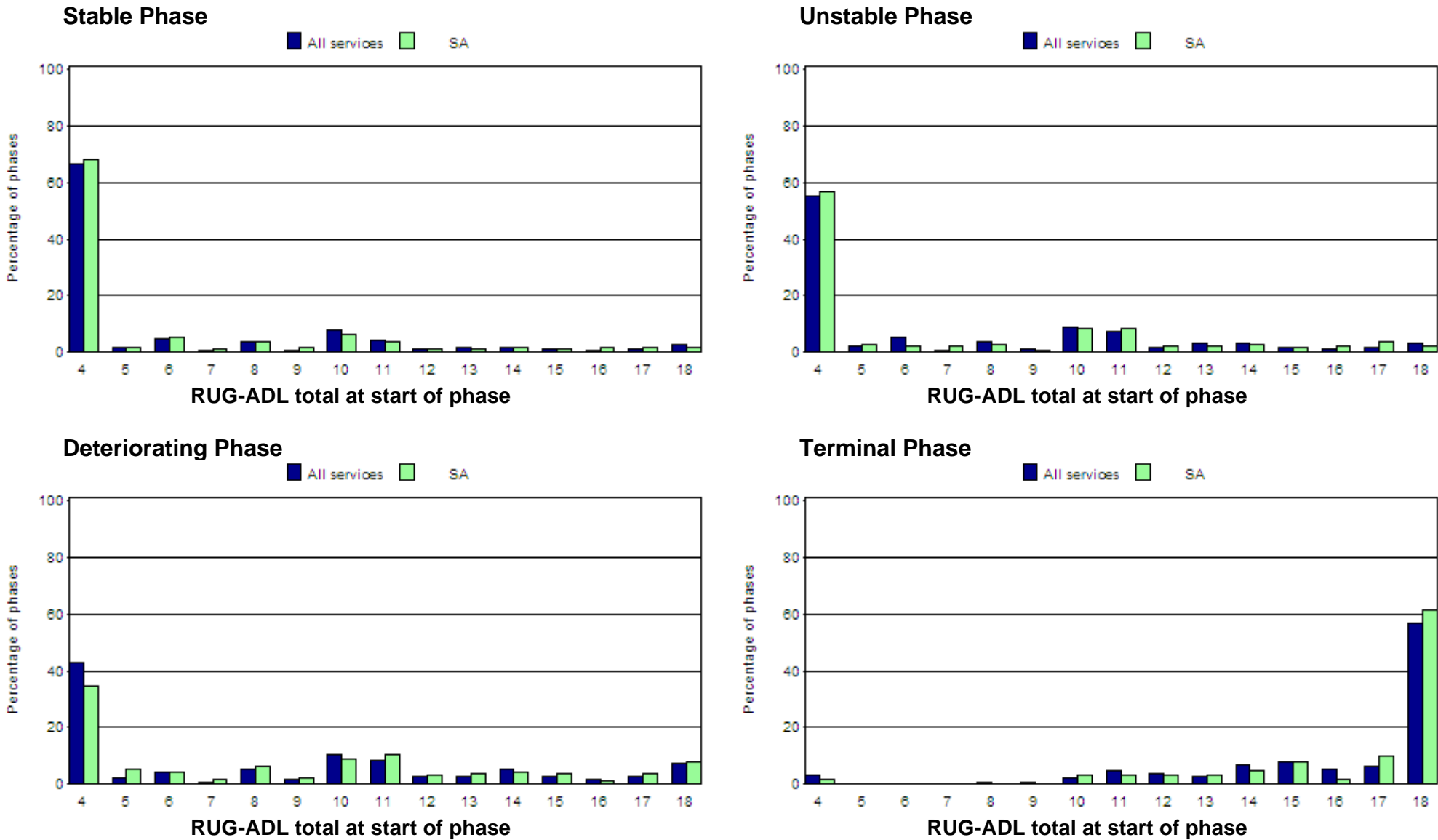


Table 21 Profile of PC Problem Severity Scores (percentages) at beginning of phase by phase type - overnight admitted patients

Phase	Problem severity	SA				All services			
		Absent	Mild	Moderate	Severe	Absent	Mild	Moderate	Severe
Stable	Pain	36.4	42.6	17.9	3.1	33.8	43.6	18.4	4.3
	Other Symptom	14.5	46.3	32.4	6.8	14.1	43.4	31.5	11.0
	Psychological/Spiritual	23.5	47.4	25.2	4.0	19.6	47.5	23.4	9.6
	Family/Carer	26.0	42.9	22.8	8.2	26.8	40.4	21.8	11.0
Unstable	Pain	26.8	27.1	28.9	17.2	18.8	27.6	33.1	20.4
	Other Symptom	10.7	25.8	44.0	19.6	5.7	21.1	42.6	30.6
	Psychological/Spiritual	19.1	35.7	30.7	14.5	9.9	34.3	33.5	22.3
	Family/Carer	24.0	30.5	31.8	13.7	16.1	30.2	30.9	22.8
Deteriorating	Pain	27.5	37.6	25.5	9.4	24.6	33.3	27.4	14.6
	Other Symptom	6.4	22.5	52.3	18.8	6.4	20.9	39.3	33.3
	Psychological/Spiritual	13.6	36.3	38.4	11.7	12.1	33.3	32.7	21.9
	Family/Carer	15.5	30.7	40.5	13.2	14.1	27.1	34.1	24.7
Terminal	Pain	32.5	22.7	22.7	22.1	31.1	31.1	22.3	15.5
	Other Symptom	17.5	16.9	33.8	31.8	17.0	22.0	26.5	34.5
	Psychological/Spiritual	28.7	31.5	21.0	18.9	30.5	27.2	21.8	20.5
	Family/Carer	9.1	25.2	35.0	30.8	10.3	24.1	31.2	34.3

Table 22 Profile of PC Problem Severity Scores (percentages) at beginning of phase by phase type - patients not admitted overnight

Phase	Problem severity	SA				All services			
		Absent	Mild	Moderate	Severe	Absent	Mild	Moderate	Severe
Stable	Pain	44.0	46.8	8.6	0.6	35.3	50.7	12.5	1.6
	Other Symptom	10.1	60.3	27.3	2.3	15.0	55.7	26.0	3.3
	Psychological/Spiritual	18.4	61.5	18.1	2.0	24.8	51.1	20.7	3.4
	Family/Carer	20.7	52.3	23.0	4.0	23.6	44.5	26.9	5.1
Unstable	Pain	14.0	23.8	39.2	23.1	16.7	29.7	36.2	17.4
	Other Symptom	4.9	16.8	56.6	21.7	5.2	24.9	51.0	18.9
	Psychological/Spiritual	12.6	34.3	39.9	13.3	11.6	38.1	40.1	10.2
	Family/Carer	12.6	25.9	41.3	20.3	12.8	30.4	40.3	16.5
Deteriorating	Pain	30.0	40.0	24.3	5.7	25.3	42.2	25.5	6.9
	Other Symptom	2.3	27.3	57.7	12.7	3.3	30.7	49.7	16.3
	Psychological/Spiritual	13.0	43.7	38.7	4.7	12.8	43.7	35.1	8.3
	Family/Carer	11.3	31.0	46.3	11.3	10.2	33.5	40.6	15.8
Terminal	Pain	29.0	29.0	33.9	8.1	29.8	39.5	22.9	7.8
	Other Symptom	16.1	25.8	33.9	24.2	17.5	29.5	31.2	21.8
	Psychological/Spiritual	37.1	37.1	17.7	8.1	30.1	34.8	24.2	10.9
	Family/Carer	6.5	21.0	43.5	29.0	6.9	25.9	41.2	25.9

Table 23 Average Symptom Assessment Scores (SAS) at beginning of phase by phase and episode type

Phase	Symptom Assessment Score	Overnight admitted		Not admitted overnight	
		SA	All services	SA	All services
Stable	Insomnia	1.8	1.6	1.7	1.6
	Appetite	2.9	2.7	2.6	2.6
	Nausea	0.9	0.9	0.8	0.8
	Bowels	2.1	1.9	1.6	1.4
	Breathing	1.7	1.6	1.9	1.7
	Fatigue	4.3	4.4	4.9	4.4
	Pain	2.4	2.3	1.9	1.8
Unstable	Insomnia	2.5	2.6	3.1	2.7
	Appetite	3.7	4.1	4.3	4.1
	Nausea	1.7	2.0	1.8	1.8
	Bowels	3.0	3.1	2.9	2.2
	Breathing	2.4	2.5	2.7	2.3
	Fatigue	5.2	5.6	5.9	5.8
	Pain	3.9	4.0	4.6	3.7
Deteriorating	Insomnia	1.9	2.0	2.2	1.9
	Appetite	3.8	4.0	4.0	3.7
	Nausea	1.3	1.5	0.9	1.1
	Bowels	2.4	2.9	2.6	1.7
	Breathing	2.5	2.8	2.7	2.3
	Fatigue	5.6	5.9	6.2	5.9
	Pain	3.2	3.4	2.9	2.4

Continued...

Phase	Symptom Assessment Score	Overnight admitted		Not admitted overnight	
		SA	All services	SA	All services
Terminal	Insomnia	0.8	0.8	1.7	1.4
	Appetite	1.7	2.3	2.9	4.0
	Nausea	0.5	0.7	1.2	0.8
	Bowels	1.6	2.0	2.1	1.4
	Breathing	3.1	3.2	2.3	2.6
	Fatigue	4.5	4.2	5.5	6.4
	Pain	3.4	2.7	3.1	2.2

Table 24 Karnofsky score at phase start by episode type

Karnofsky score	Overnight admitted				Not admitted overnight			
	SA	%	All Services	%	SA	%	All Services	%
Comatose or barely rousable	163	9.8	1820	10.1	24	2.8	281	3.5
Totally bedfast and requiring extensive nursing care	400	24.0	3477	19.3	78	9.1	699	8.6
Almost completely bedfast	197	11.8	1743	9.7	58	6.8	449	5.5
In bed more than 50% of the time	277	16.6	2583	14.3	86	10.1	725	8.9
Requires considerable assistance	276	16.6	3113	17.3	207	24.3	1637	20.1
Requires occasional assistance	237	14.2	2206	12.3	230	27.0	1865	22.9
Cares for self	68	4.1	737	4.1	116	13.6	1276	15.7
Normal activity with effort	25	1.5	291	1.6	37	4.3	663	8.1
Able to carry on normal activity; minor signs or symptoms	12	0.7	97	0.5	14	1.6	232	2.8
Normal; no complaints; no evidence of disease	0	0.0	4	0.0	0	0.0	13	0.2
Not stated/inadequately described	12	0.7	1934	10.7	3	0.4	304	3.7
Total	1667	100.0	18005	100.0	853	100.0	8144	100.0

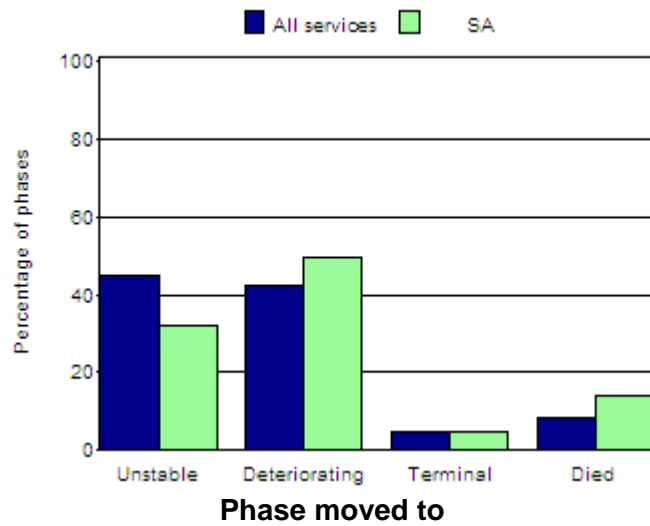
Note: Bereavement phase and records where Karnofsky was 0 (dead) are excluded from the table.

Table 25 Reason for phase end by phase and episode type

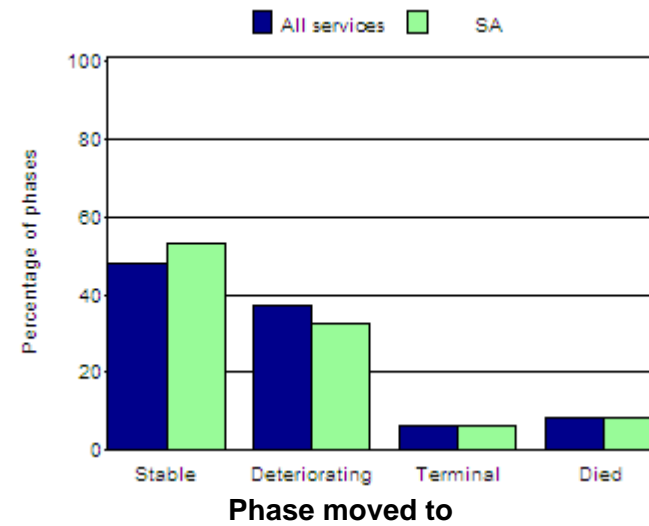
Phase	Phase end reason	Overnight admitted				Not admitted overnight			
		SA	%	All services	%	SA	%	All services	%
Stable	Phase change	243	51.4	2208	49.7	194	55.7	1388	50.3
	Discharge/case closure	207	43.8	2099	47.2	111	31.9	827	30.0
	Died	23	4.9	125	2.8	43	12.4	153	5.5
	Bereavement phase end	0	0.0	0	0.0	0	0.0	0	0.0
	Not stated/inadequately described	0	0.0	15	0.3	0	0.0	390	14.1
	<i>Total</i>		<i>473</i>	<i>100.0</i>	<i>4447</i>	<i>100.0</i>	<i>348</i>	<i>100.0</i>	<i>2758</i>
Unstable	Phase change	343	88.6	4604	79.3	90	62.9	1126	64.2
	Discharge/case closure	21	5.4	737	12.7	38	26.6	390	22.2
	Died	22	5.7	377	6.5	15	10.5	76	4.3
	Bereavement phase end	1	0.3	5	0.1	0	0.0	0	0.0
	Not stated/inadequately described	0	0.0	86	1.5	0	0.0	162	9.2
	<i>Total</i>		<i>387</i>	<i>100.0</i>	<i>5809</i>	<i>100.0</i>	<i>143</i>	<i>100.0</i>	<i>1754</i>
Deteriorating	Phase change	320	61.4	3131	66.4	123	41.0	1365	47.1
	Discharge/case closure	78	15.0	593	12.6	105	35.0	980	33.8
	Died	122	23.4	967	20.5	72	24.0	303	10.5
	Bereavement phase end	1	0.2	12	0.3	0	0.0	1	0.0
	Not stated/inadequately described	0	0.0	13	0.3	0	0.0	247	8.5
	<i>Total</i>		<i>521</i>	<i>100.0</i>	<i>4716</i>	<i>100.0</i>	<i>300</i>	<i>100.0</i>	<i>2896</i>
Terminal	Phase change	14	4.9	285	9.2	4	6.5	139	17.2
	Discharge/case closure	4	1.4	75	2.4	4	6.5	45	5.6
	Died	267	93.4	2706	87.6	54	87.1	539	66.9
	Bereavement phase end	1	0.3	18	0.6	0	0.0	0	0.0
	Not stated/inadequately described	0	0.0	6	0.2	0	0.0	83	10.3
	<i>Total</i>		<i>286</i>	<i>100.0</i>	<i>3090</i>	<i>100.0</i>	<i>62</i>	<i>100.0</i>	<i>806</i>

Figure 3 Phase progression by phase - all phases

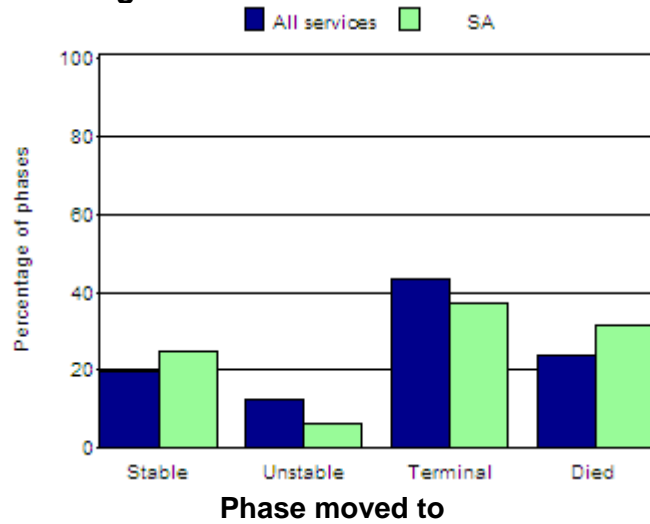
Stable Phase



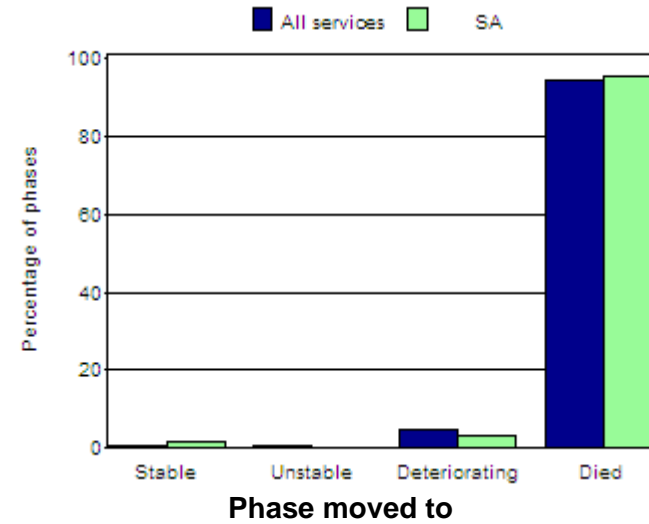
Unstable Phase



Deteriorating Phase



Terminal Phase



Section 3 - Benchmark analysis

Benchmark Measure 1 - Time from referral to first contact

Table 26 and Figures 4 and 5 below present descriptive data on the first benchmark measure. This measure is the percentage of patients seen either on the day of, or the day following the referral. The benchmark is **90%**.

The time from referral to first contact is calculated as the time from the date of referral to either the date of first contact (if provided) or the episode start date.

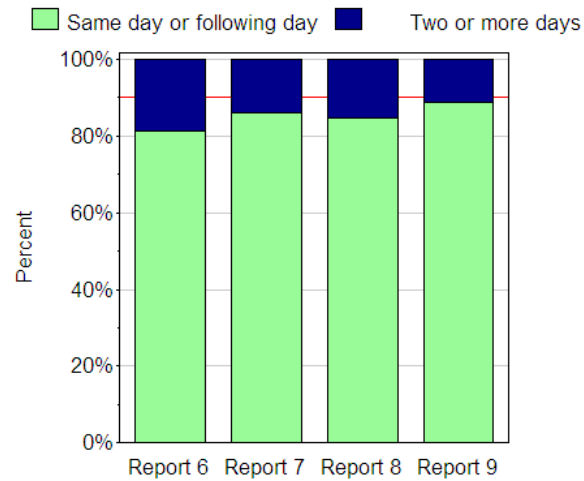
Table 26 Time from referral to first contact by episode type

Time (in days)	Overnight admitted patients				Patients not admitted overnight			
	SA	%	All Services	%	SA	%	All Services	%
Same day or following day	697	88.9	6957	89.2	316	64.1	2188	61.6
2-7 days	60	7.7	682	8.7	128	26.0	855	24.1
8-14 days	15	1.9	94	1.2	19	3.9	281	7.9
Greater than 14 days	12	1.5	70	0.9	30	6.1	228	6.4
Average	1.4	na	1.3	na	2.4	na	2.6	na
Median	1	na	1	na	1	na	1	na

Note: Episodes where referral date was not recorded are excluded from the table. In addition, all records where time from referral to first contact or time from first contact to episode start was greater than 7 days were considered to be outliers and were assumed to equal 7 days for the purpose of calculating the average and median time.

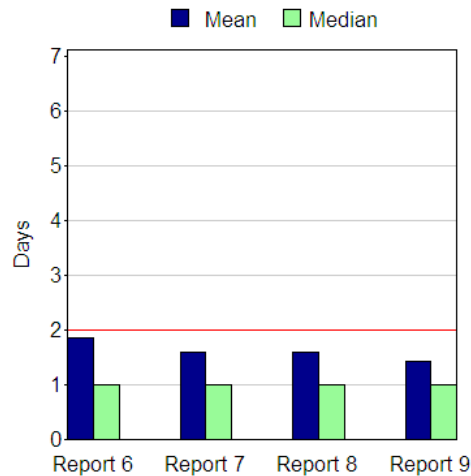
Figure 4 Time from referral to first contact - overnight admitted patients

SA



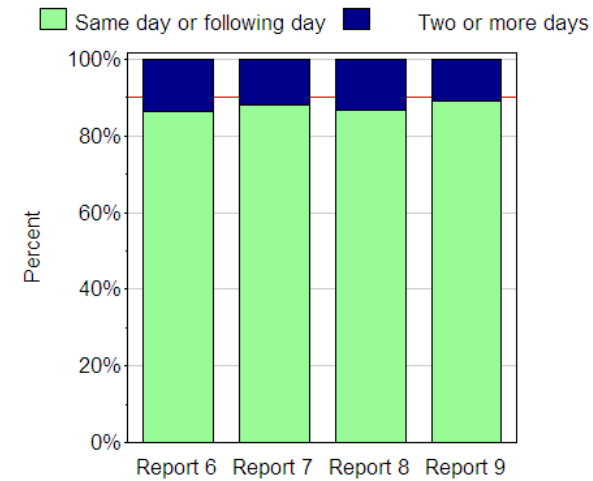
Time from referral to first contact

SA



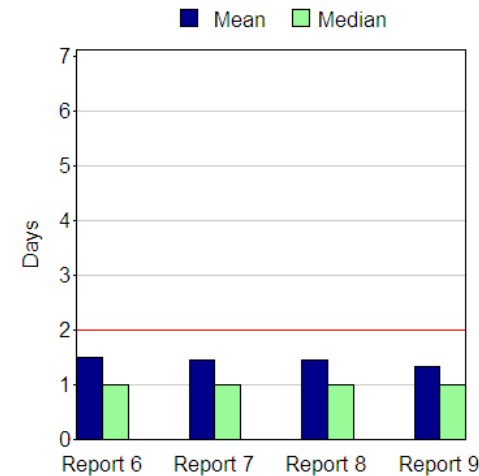
Mean and median time from referral to first contact

All services



Time from referral to first contact

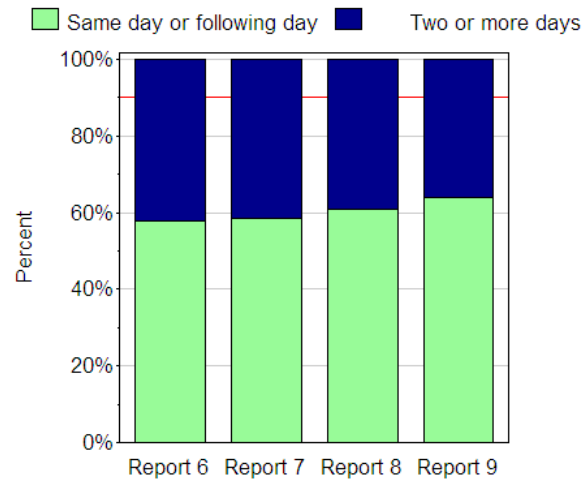
All services



Mean and median time from referral to first contact

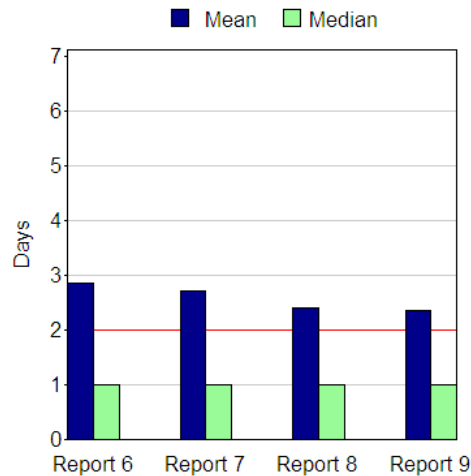
Figure 5 Time from referral to first contact - patients not admitted overnight

SA



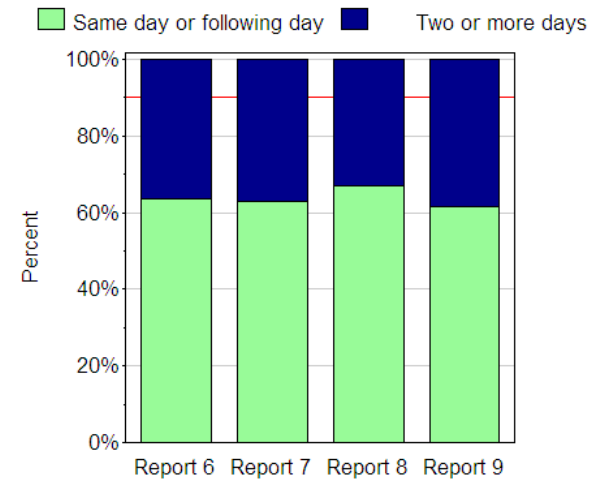
Time from referral to first contact

SA



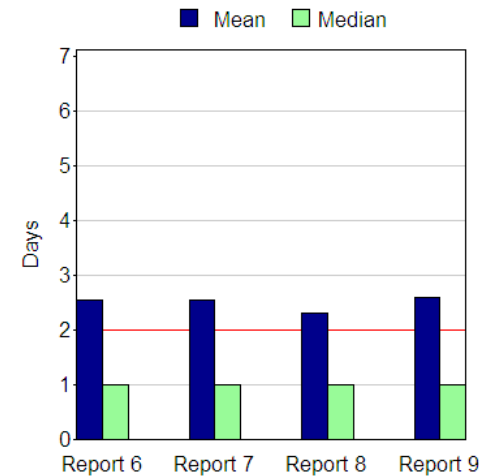
Mean and median time from referral to first contact

All services



Time from referral to first contact

All services



Mean and median time from referral to first contact

Benchmark Measure 2 - Time in unstable phase

The following table presents descriptive data on the second benchmark measure. The first part of this measure is the percentage of patients remaining unstable for less than 7 days and is split by occurrence of unstable phase. The benchmark for patients in their first phase is **85%** and for patients in a subsequent phase is **90%**. The second part of this measure is the median time spent in the unstable phase and the benchmark is **2 days or less**.

Table 27 Time in unstable phase by episode type and occurrence of unstable phase

Episode type	Occurrence of unstable phase	Number		Percent unstable for < 7 days		Median days in unstable phase	
		SA	All Services	SA	All Services	SA	All Services
Overnight admitted	First phase	270	4197	91.5	71.8	2	3
	Subsequent phase	117	1612	92.3	82.0	2	2
	<i>Total</i>	<i>387</i>	<i>5809</i>	<i>91.7</i>	<i>74.7</i>	<i>2</i>	<i>3</i>
Not admitted overnight	First phase	54	864	50.0	44.9	6	8
	Subsequent phase	89	890	46.1	60.3	8	4
	<i>Total</i>	<i>143</i>	<i>1754</i>	<i>47.6</i>	<i>52.7</i>	<i>7</i>	<i>6</i>

Benchmark Measure 3 - Change in pain

Change in pain PC Problem Severity Score (PCPSS)

The following two tables present data on the third benchmark measure in relation to pain PCPSS. The first measure is the percentage of patients with absent/mild pain at phase start remaining with absent/mild pain at phase end and the benchmark is **90%**. The second measure is the percentage of patients with moderate/severe pain at phase start with absent/mild pain at phase end and the benchmark is **60%**. Note that only phases with a valid pain score at both the start and the end of the phase are included in the following analysis.

Table 28 Patients with absent or mild pain at beginning of phase whose pain remained absent or mild at end of phase

Episode type		SA				All Services			
		Report 6	Report 7	Report 8	Report 9	Report 6	Report 7	Report 8	Report 9
Overnight admitted	Number	15	63	98	264	1650	2485	2166	2860
	%	83.3	88.7	81.0	75.4	79.5	82.3	75.9	79.0
Not admitted overnight	Number	171	177	204	186	607	1201	1336	1441
	%	80.3	72.5	75.3	71.5	82.4	79.1	77.1	75.8

Table 29 Patients with moderate or severe pain at beginning of phase whose pain decreased to absent or mild at end of phase

Episode type		SA				All Services			
		Report 6	Report 7	Report 8	Report 9	Report 6	Report 7	Report 8	Report 9
Overnight admitted	Number	7	15	44	95	731	1024	1031	1257
	%	36.8	51.7	50.0	45.0	36.7	38.1	40.8	44.0
Not admitted overnight	Number	26	41	55	56	122	270	382	485
	%	35.6	34.2	51.9	60.2	31.4	38.1	54.0	55.7

Change in pain Symptom Assessment Score (SAS)

The following two tables present data on the third benchmark measure in relation to pain SAS. The first measure is the percentage of patients with absent/mild pain at phase start remaining with absent/mild pain at phase end and the benchmark is **90%**. The second measure is the percentage of patients with moderate/severe pain at phase start with absent/mild pain at phase end and the benchmark is **60%**. Note that only phases with a valid pain score at both the start and the end of the phase are included in the following analysis.

Table 30 *Patients with absent or mild pain at beginning of phase whose pain remained absent or mild at end of phase*

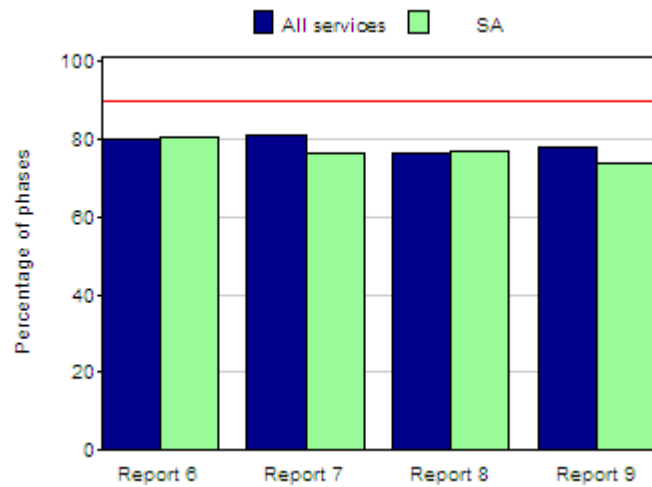
Episode type		SA				All Services			
		Report 6	Report 7	Report 8	Report 9	Report 6	Report 7	Report 8	Report 9
Overnight admitted	Number	258	356	303	351	1771	3107	2950	3370
	%	72.9	76.9	75.9	73.7	80.4	82.4	76.7	79.8
Not admitted overnight	Number	137	145	184	162	3696	2624	2008	1978
	%	73.3	73.2	75.4	72.6	83.3	81.6	76.8	78.2

Table 31 *Patients with moderate or severe pain at beginning of phase whose pain decreased to absent or mild at end of phase*

Episode type		SA				All Services			
		Report 6	Report 7	Report 8	Report 9	Report 6	Report 7	Report 8	Report 9
Overnight admitted	Number	135	140	147	175	843	1235	1339	1453
	%	35.4	42.0	43.1	41.5	38.9	41.2	41.0	41.3
Not admitted overnight	Number	20	39	56	53	625	552	598	591
	%	23.0	25.2	42.7	41.7	38.6	40.4	50.1	53.1

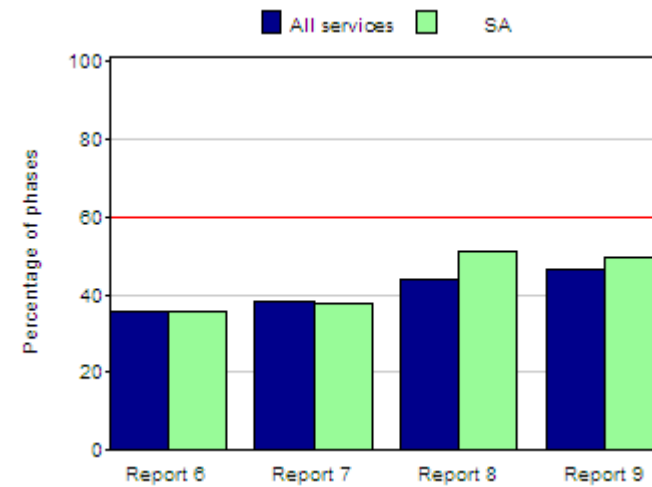
Figure 6 Change in pain benchmark measures - all phases

Pain PCPSS



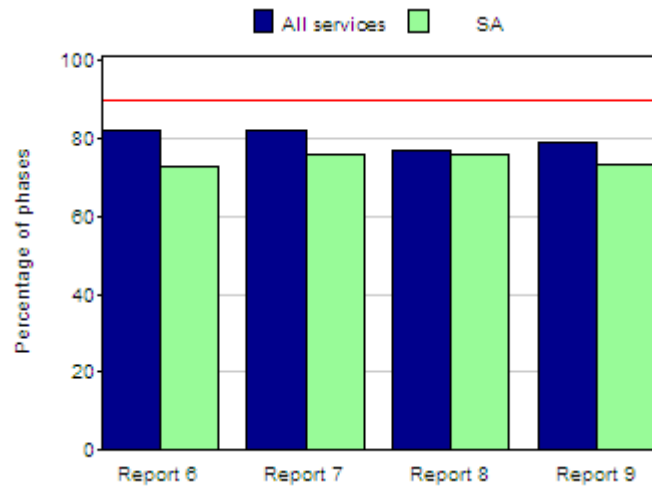
Absent/mild pain at both start and end of phase

Pain PCPSS



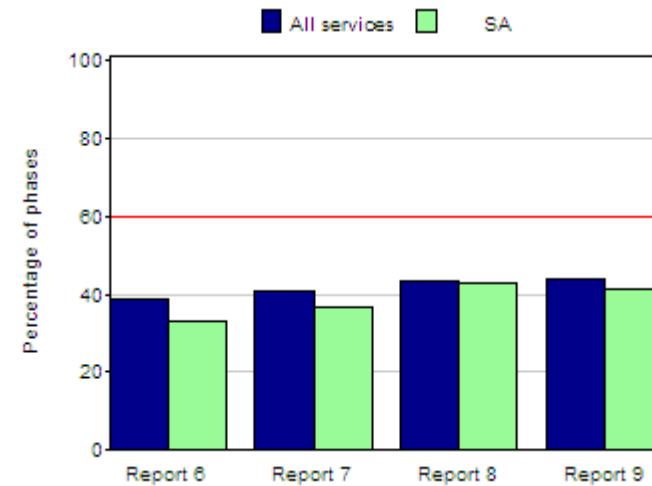
Mod/severe pain at start with absent/mild pain at end

Pain SAS



Absent/mild pain at both start and end of phase

Pain SAS



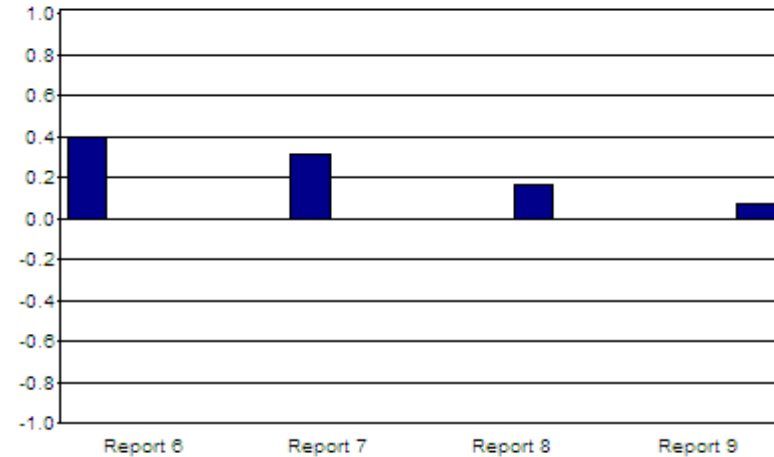
Mod/severe pain at start with absent/mild pain at end

Benchmark Measure 4 - Change in symptoms relative to the national average

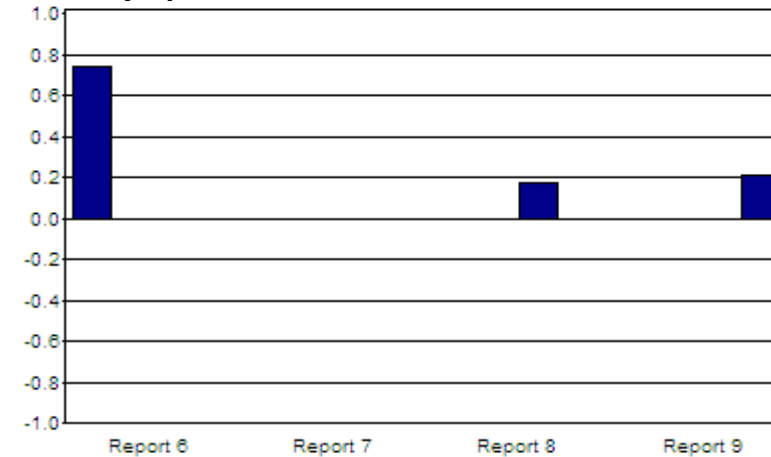
Please refer to the glossary section for a detailed explanation of the following analysis. The benchmark for this measure is 0 or above.

Figure 7 PCPSS mean change adjusted for phase and symptom score at start of phase for SA

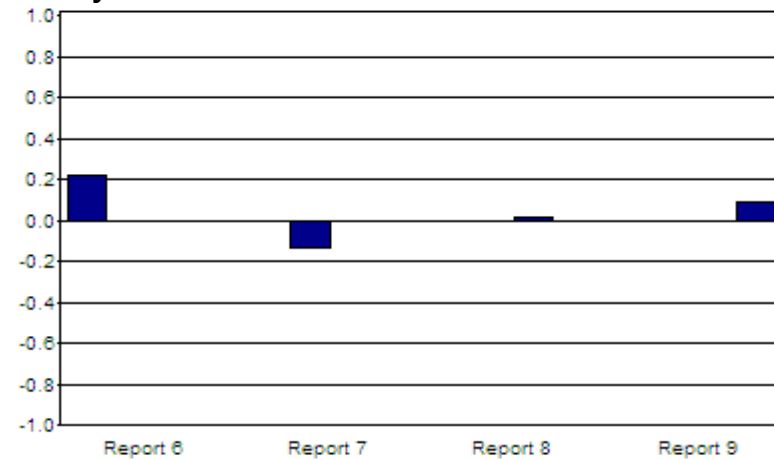
Pain



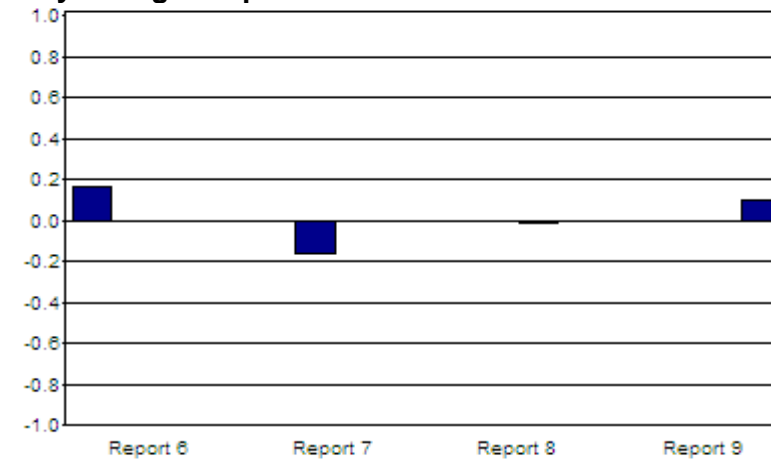
Other symptoms



Family/Carer



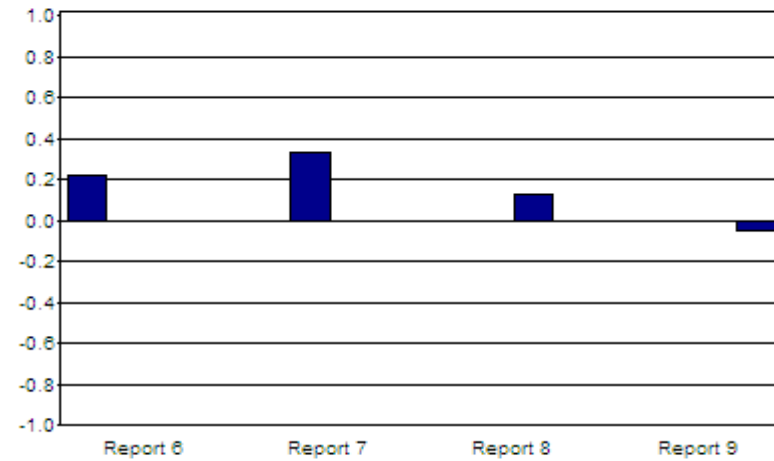
Psychological/spiritual



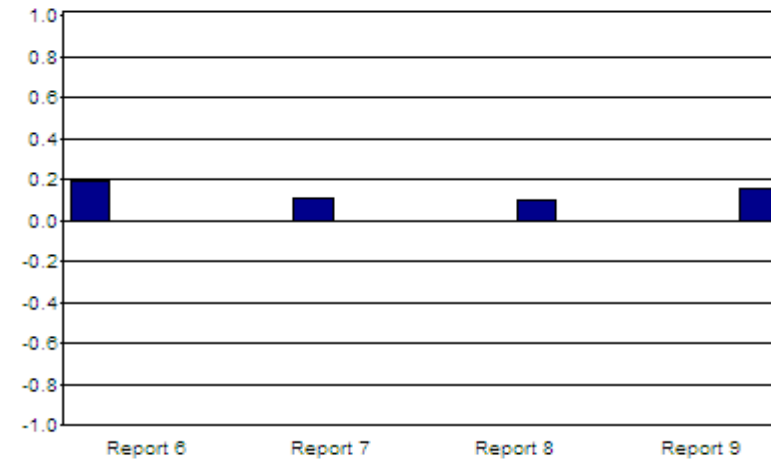
Note: Only services with 10 or more valid observations are included in the above graphs.

Figure 8 SAS mean change adjusted for phase and symptom score at start of phase for SA

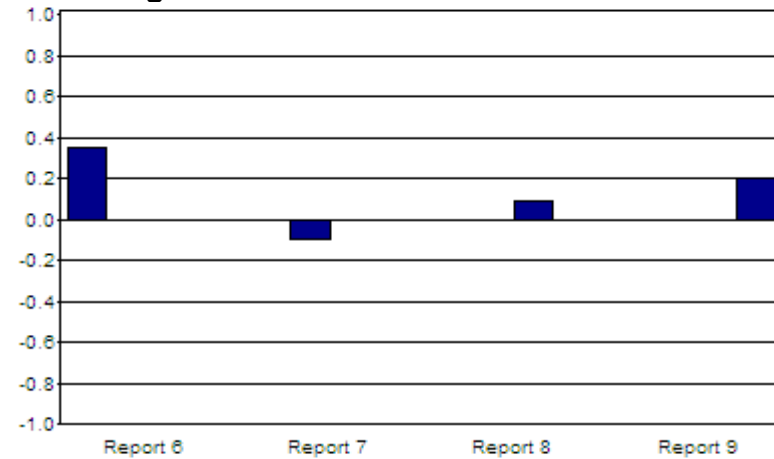
Pain



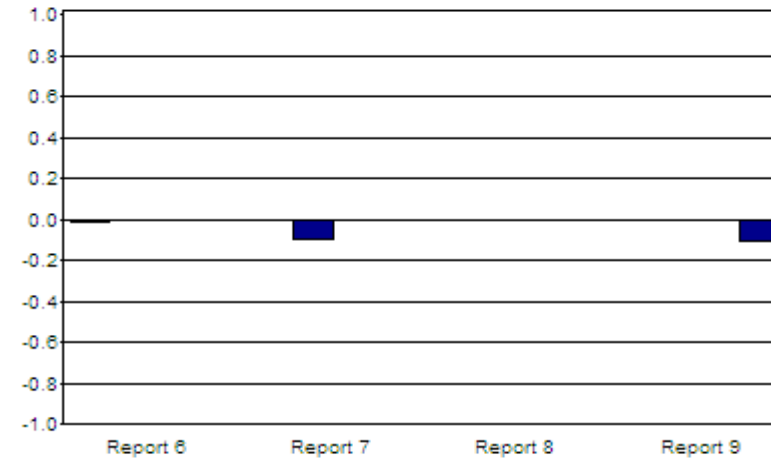
Nausea



Breathing



Bowels



Note: Only services with 10 or more valid observations are included in the above graphs.

Appendix 1 - Services included in this report

This report includes data from the following 95 services:

Table 32 *Services providing data*

Palliative Care Service	State	Begin date	End date	Months
Baringa Private Hospital	NSW	February 2010	May 2010	4
Calvary Health Care Sydney	NSW	January 2010	June 2010	6
Calvary Health Care Riverina	NSW	January 2010	June 2010	6
Calvary Mater Newcastle	NSW	January 2010	June 2010	6
Camden Hospital	NSW	January 2010	May 2010	5
Coffs Harbour Palliative Care Service	NSW	January 2010	June 2010	6
David Berry Hospital	NSW	January 2010	June 2010	6
Hope Healthcare - Braeside Hospital	NSW	January 2010	June 2010	6
Hope Healthcare - Greenwich Hospital	NSW	January 2010	June 2010	6
Hope Healthcare - Neringah Hospital	NSW	January 2010	June 2010	6
Lourdes Hospital	NSW	January 2010	June 2010	6
Manning Rural Referral Hospital	NSW	January 2010	June 2010	6
Mercy Care Centre - Young	NSW	January 2010	June 2010	6
Mercy Health Service Albury	NSW	January 2010	June 2010	6
Mt Druitt Hospital	NSW	January 2010	June 2010	6
Murwillumbah Community Health Service	NSW	April 2010	June 2010	3
Port Kembla Hospital	NSW	January 2010	June 2010	6
Sacred Heart Palliative Care Service	NSW	January 2010	June 2010	6
St Joseph's Hospital	NSW	January 2010	June 2010	6
St Vincent's Hospital Lismore	NSW	January 2010	June 2010	6
St Vincent's Hospital, Sydney - Palliative Care Consult Service	NSW	January 2010	June 2010	6
Tamworth Base Hospital	NSW	January 2010	June 2010	6

Continued...

Palliative Care Service	State	Begin date	End date	Months
Tweed, Byron, Murwillumbah Community Health Service	NSW	January 2010	June 2010	6
Westmead Hospital	NSW	January 2010	June 2010	6
Banksia Palliative Care Services	Vic	January 2010	June 2010	6
Caritas Christi - Fitzroy	Vic	January 2010	June 2010	6
Caritas Christi - Kew	Vic	January 2010	June 2010	6
Eastern Palliative Care	Vic	March 2010	June 2010	4
Gandarra Palliative Care Unit - Ballarat	Vic	January 2010	June 2010	6
Goulburn Valley Hospice Inc.	Vic	January 2010	June 2010	6
Lower Hume Palliative Care	Vic	January 2010	June 2010	6
Melbourne Citymission Palliative Care	Vic	January 2010	June 2010	6
Mercy Palliative Care - Medical Consultant	Vic	January 2010	June 2010	6
Mercy Palliative Care - Sunshine	Vic	January 2010	June 2010	6
Northern Health Broadmeadows Palliative Care Unit	Vic	January 2010	June 2010	6
Northern Health Palliative Care Consult Team	Vic	March 2010	June 2010	4
Peter MacCallum Cancer Centre	Vic	April 2010	June 2010	3
Royal Melbourne Hospital	Vic	June 2010	June 2010	1
South East Palliative Care	Vic	January 2010	June 2010	6
Sunraysia Community Palliative Care Service Clinic	Vic	January 2010	May 2010	5
Werribee Mercy Hospital	Vic	January 2010	June 2010	6
Western Health - Community	Vic	February 2010	May 2010	4
Bundaberg Palliative Access	Qld	January 2010	June 2010	6
Cairns and Gordonvale Hospital	Qld	January 2010	June 2010	6
Caloundra Hospital	Qld	January 2010	June 2010	6
Canossa Private Hospital	Qld	January 2010	June 2010	6
Gladstone Hospital	Qld	January 2010	June 2010	6
Gympie Hospital	Qld	January 2010	June 2010	6
Hervey Bay & Fraser Coast Palliative Care Service	Qld	January 2010	June 2010	6
Hopewell Hospice	Qld	January 2010	June 2010	6

Continued...

Palliative Care Service	State	Begin date	End date	Months
Ipswich Hospice	Qld	January 2010	June 2010	6
Ipswich Hospital	Qld	January 2010	June 2010	6
Karuna Hospice Services	Qld	January 2010	June 2010	6
Mater Adult's Hospital Brisbane	Qld	January 2010	June 2010	6
Mater Private Brisbane	Qld	January 2010	June 2010	6
Mater Private Bundaberg	Qld	January 2010	June 2010	6
Mater Private Gladstone	Qld	January 2010	June 2010	6
Mater Private Mackay	Qld	January 2010	June 2010	6
Mater Private Rockhampton	Qld	January 2010	June 2010	6
Nambour Community & Hospital	Qld	January 2010	June 2010	6
Redcliffe Hospital Palliative Care Unit	Qld	January 2010	June 2010	6
Rockhampton Base Hospital	Qld	January 2010	June 2010	6
Royal Brisbane and Women's Hospital	Qld	January 2010	June 2010	6
St Vincent's Hospital Brisbane	Qld	January 2010	June 2010	6
Sunshine Coast and Cooloola Palliative Care Service	Qld	January 2010	June 2010	6
The Prince Charles Hospital	Qld	January 2010	June 2010	6
Toowoomba Hospital	Qld	January 2010	June 2010	6
Townsville Palliative Care Centre	Qld	January 2010	June 2010	6
Wesley Private	Qld	January 2010	June 2010	6
Adelaide Hills Community Health Service	SA	January 2010	June 2010	6
Calvary Health Care Adelaide (Mary Potter Hospice)	SA	January 2010	June 2010	6
Lyell McEwin Palliative Care Service	SA	January 2010	June 2010	6
Modbury Hospice SA	SA	January 2010	June 2010	6
Port Lincoln Health Service	SA	January 2010	June 2010	6
Port Pirie Regional Health Service	SA	January 2010	June 2010	6
Riverland Palliative Care Service	SA	January 2010	June 2010	6
Royal Adelaide Hospital	SA	January 2010	June 2010	6
South East Regional Community Health Service	SA	January 2010	June 2010	6

Continued...

Palliative Care Service	State	Begin date	End date	Months
Southern Adelaide Palliative Services	SA	January 2010	June 2010	6
Stirling District Hospital	SA	January 2010	June 2010	6
Yorke Peninsula Palliative Care	SA	January 2010	June 2010	6
Albany Palliative Care Service	WA	January 2010	January 2010	1
Bethesda Hospital	WA	January 2010	May 2010	5
Geraldton Palliative Care Community Service	WA	January 2010	June 2010	6
Northam Palliative Care	WA	January 2010	June 2010	6
Peel Community Palliative Care Service	WA	January 2010	February 2010	2
Royal Perth Hospital	WA	January 2010	June 2010	6
Silver Chain Hospice Care Service	WA	January 2010	June 2010	6
St John of God Hospital - Bunbury	WA	January 2010	April 2010	4
St John of God Hospital - Geraldton	WA	January 2010	June 2010	6
St John of God Murdoch Community Hospice	WA	January 2010	June 2010	6
St John of God Subiaco	WA	January 2010	June 2010	6
Calvary Health Care Tasmania - St John's	Tas	January 2010	May 2010	5
JW Whittle Palliative Care Unit	Tas	January 2010	June 2010	6
Calvary Health Care Canberra (Clare Holland House)	ACT	January 2010	June 2010	6

Appendix 2 - Data consistency

Consistency with PCOC version 2 data standards is summarised below. Over this 6 month period consistency with patient, episode and phase level data items for SA and for all services has been calculated. Consistency refers to completion of data items used within this report with valid entries based on the PCOC version 2 item codes.

In addition, some data items are not required to be completed. For example, place of death is only required for not admitted overnight patients who died. Hence the complete column in the following tables only refers to the percentage of complete records where the data item was required to be completed.

Table 33 *Data consistency - patient level items*

Data item	SA	All Services
	% Complete	% Complete
Date of birth	100.0	100.0
Sex	100.0	99.9
Indigenous status	94.4	95.6
Country of birth	80.3	93.2
Main language	92.2	93.5
Primary diagnosis	99.7	94.7

Table 34 Data consistency - episode level items

Data item	SA	All Services
	% Complete	% Complete
Date of first contact/assessment	99.9	92.8
Referral date	100.0	88.4
Referral source	95.0	92.7
Episode start date	100.0	100.0
Mode of episode start	99.5	96.6
Accommodation at episode start	98.6	92.5
Episode end date	100.0	99.2
Level of support at episode start	99.2	76.8
Mode of episode end	98.2	96.3
Accommodation at episode end	90.3	80.7
Level of support at episode end	99.6	93.3
Place of death	97.3	89.1

Table 35 *Data consistency - phase level items*

Data item	Sub-Category (where applicable)	SA %Complete	All Services %Complete
Phase start date		100.0	100.0
Phase		100.0	100.0
RUG-ADL at phase start	Bed Mobility	100.0	96.1
	Toileting	100.0	96.0
	Transfers	100.0	97.1
	Eating	100.0	95.3
PC Problem Severity at phase start	Pain	77.4	69.4
	Other Symptom	77.4	74.5
	Psychological/Spiritual	100.0	87.7
	Family/Carer	100.0	86.1
Symptom Assessment Score at phase start	Insomnia	99.4	84.7
	Appetite	99.4	84.8
	Nausea	99.4	84.7
	Bowels	99.4	84.8
	Breathing	99.3	84.3
	Fatigue	99.4	84.7
	Pain	99.4	84.7
Phase end reason		99.9	96.0
Karnofsky at phase start		99.4	91.8

Appendix 3 – Glossary

Overnight admitted and not admitted overnight groups

Where appropriate, the analysis in this report has been reported by episode type. The PCOC definition of episode type is “The location of the patient for this episode”. The options are as follows:

- 0 Overnight admitted patient in a non-designated inpatient palliative care bed/unit
- 1 Overnight admitted patient in a designated inpatient palliative care bed/unit.
- 3 Ambulatory
- 4 Community
- 5 Consultation service

These 5 options have been grouped into 2 for the purpose of reporting. The 2 groups are as follows:

- Overnight admitted Includes episode types 0 and 1
- Not admitted overnight Includes episode types 3, 4 and 5

However, consultation services have been difficult to categorise into the above groups. Consultation services have been included in the overnight admitted group, with the exception of services identifying as outpatient or community consultancy which have been included in the not admitted overnight group. Consultation services that treat patients in a hospital bed have been instructed to tick “0” or “1” for the episode type field. Consultation services that treat patients in an outpatient setting or in the community have been instructed to tick “5” for the episode type field.

Episode of care

An episode of care is a period of contact between a patient and a palliative care service that is provided by one palliative care service and occurs in one setting (either overnight admitted patient or not admitted overnight patient). When a patient moves from their home to a residential aged care facility (RACF) it is considered their home and the episode continues. An episode of care refers to the care received between admission and separation within one setting. An episode of palliative care begins:

- on the day the patient is assessed face to face by the palliative care provider and there is agreement between the patient and the service.

An episode of palliative care ends when:

- the principal clinical intent of the care changes and the patient is no longer receiving palliative care or
- when the patient is formally separated from the hospital/hospice/community.

Phase of care

The palliative care phase is the stage of the patient's illness. Palliative care phases are not sequential and a patient may move back and forth between phases. Palliative care phases provide a clinical indication of the level of care required and have been shown to correlate strongly with survival within longitudinal, prospective studies. There are 5 palliative care phases; stable, unstable, deteriorating, terminal and bereaved. The definitions are as follows:

Phase 1: Stable

All clients not classified as unstable, deteriorating, or terminal.

- The person's symptoms are adequately controlled by established management. Further interventions to maintain symptom control and quality of life have been planned.
- The situation of the family/carers is relatively stable and no new issues are apparent. Any needs are met by the established plan of care.

Phase 2: Unstable

- The person experiences the development of a new unexpected problem or a rapid increase in the severity of existing problems, either of which require an urgent change in management or emergency treatment
- The family/carers experience a sudden change in their situation requiring urgent intervention by members of the multidisciplinary team.

Phase 3: Deteriorating

- The person experiences a gradual worsening of existing symptoms or the development of new but expected problems. These require the application of specific plans of care and regular review but not urgent or emergency treatment.
- The family/carers experience gradually worsening distress and other difficulties, including social and practical difficulties, as a result of the illness of the person. This requires a planned support program and counselling as necessary.

Phase 4: Terminal

Death is likely in a matter of days and no acute intervention is planned or required. The use of frequent, usually daily, interventions aimed at physical, emotional and spiritual issues is required.

The typical features of a person in this phase may include the following:

- Profoundly weak
- Essentially bed bound
- Drowsy for extended periods
- Disoriented and has a severely limited attention span
- Increasingly disinterested in food and drink
- Finding it difficult to swallow medication
- The family/carers recognise that death is imminent and care is focused on emotional and spiritual issues as a prelude to bereavement.

Phase 5: Bereaved

Death of the patient has occurred and the carers are grieving. A planned bereavement support program is available including referral for counseling as necessary. Record only one bereavement phase per patient - not one for each carer/family member.

Resource Utilisation Groups- Activities of Daily Living Definitions (RUG-ADL)

RUG-ADL consists of 4 items (bed mobility, toileting, transfers and eating) and should be assessed on admission, at phase change and at episode end. The item score definitions are as follows:

RUG –ADL Item	Score	Definition
BED MOBILITY		Ability to move in bed after the transfer into bed has been completed.
Independent or supervision only	1	Able to readjust position in bed, and perform own pressure area relief, through spontaneous movement around bed or with prompting from carer. No hands-on assistance required. May be independent with the use of a device.
Limited physical assistance	3	Able to readjust position in bed, and perform own pressure area relief, with the assistance of one person.
Other than two persons physical assist	4	Requires the use of a hoist or other assistive device to readjust position in bed and provide pressure relief. Still requires the assistance of one person for task.
Two or more persons physical assist	5	Requires 2 or more assistants to readjust position in bed, and perform pressure area relief.
TOILETING		Includes mobilising to the toilet, adjustment of clothing before and after toileting and maintaining perineal hygiene without the incidence of incontinence or soiling of clothes. If level of assistance differs between voiding and bowel movement, record the lower performance.
Independent or supervision only	1	Able to mobilise to toilet, adjusts clothing, cleans self, has no incontinence or soiling of clothing. All tasks are performed independently or with prompting from carer. No hands-on assistance required. May be independent with the use of a device. May be independent with the use of a device.
Limited physical assistance	3	Requires hands-on assistance of one person for one or more of the tasks.
Other than two persons physical assist	4	Requires the use of a catheter/uridome/urinal and/or colostomy/bedpan/commode chair and/or insertion of enema/ suppository. Requires assistance of one person for management of the device.
Two or more persons physical assist	5	Requires two or more assistants to perform any step of the task.
TRANSFER		Includes the transfer in and out of bed, bed to chair, in and out of shower/tub. Record the lowest performance of the day/night.
Independent or supervision only	1	Able to perform all transfers independently or with prompting of carer. No hands-on assistance required. May be independent with the use of a device.
Limited physical assistance	3	Requires hands-on assistance of one person to perform any transfer of the day/night.
Other than two persons physical assist	4	Requires use of a device for any of the transfers performed in the day/night. Requires only one person plus a device to perform the task.
Two or more persons physical assist	5	Requires 2 or more assistants to perform any transfer of the day/night.
EATING		Includes the tasks of cutting food, bringing food to mouth and chewing and swallowing food. Does not include preparation of the meal.
Independent or supervision only	1	Able to cut, chew and swallow food, independently or with supervision, once meal has been presented in the customary fashion. No hands-on assistance required. If individual relies on parenteral or gastrostomy feeding that he/she administers him/herself then Score 1.
Limited assistance	2	Requires hands on assistance of one person to set up or assist in bringing food to the mouth and/or requires food to be modified (soft or staged diet).
Extensive assistance/dependence/ tube fed	3	Person needs to be fed meal by assistant, or the individual does not eat or drink full meals by mouth but relies on parenteral/ gastrostomy feeding and does not administer feeds by him/herself.

PC Problem Severity Score (PCPSS)

The problem severity is an overall score of the patient/client and family and contains 4 items. The 4 items are:

1. Pain
2. Other symptoms
3. Psychological/spiritual
4. Family/carer

Each item is given a score from 0-3:

0 = Absent

1 = Mild

2 = Moderate

3 = Severe

Karnofsky (Australian) Performance Scale

The Karnofsky used in PCOC is the Australian (modified) version which is applicable to both inpatient and community palliative care. The Karnofsky Performance Scale assesses patient/client functioning and performance and can be used to indicate prognosis. The Karnofsky is often used in determining prognosis / survival times. The Karnofsky Performance Scale Definition Criteria is as follows:

100	Normal; no complaints; no evidence of disease
90	Able to carry on normal activity; minor signs of symptoms of disease
80	Normal activity with effort; some signs or symptoms of disease
70	Cares for self. Unable to carry on normal activity or to do active work
60	Able to care for most needs, but requires occasional assistance.
50	Requires considerable assistance and frequent medical care required.
40	In bed more than 50% of the time.
30	Almost completely bedfast.
20	Totally bedfast and requiring extensive nursing care by professionals and/or family.
10	Comatose or barely rousable.
0	Dead

Symptom Assessment Scale (SAS)

There are 7 items (symptoms) in total and each one is given a score between 0-10 (not at all to worst possible). The 7 symptoms are insomnia, appetite, nausea, bowels, breathing, fatigue and pain. Symptoms are rated by the patient/client except where they are unable due to language barrier, hearing impairment or physical condition such as terminal phase or delirium, in which case a proxy is used. Use the most appropriate proxy. This may be the nurse or the family member. Highly rated or problematic symptoms may trigger other assessments or clinical interventions.

Change in symptoms relative to the national average

These are measures of the mean change in symptoms on the PCPSS/SAS that are adjusted for both phase and for the symptom score at the start of each phase (note bereavement phases are excluded from the analysis). Therefore it is only able to be calculated on patients who either had a subsequent phase within the reporting period or were discharged. In other words it is a case mix adjusted score where we compare the change in symptom score for 'like' patients i.e. patients in the same phase who started with the same level of symptom.

This measure has been abbreviated to XCAS where X represents the symptom analysed. For example PCAS represents the Pain Case Mix Adjusted Score. Eight symptoms have been included in this report:

1. PCPSS Pain
2. PCPSS Other symptoms
3. PCPSS Psychological/spiritual
4. PCPSS Family/carer
5. SAS Pain
6. SAS Nausea
7. SAS Bowels
8. SAS Breathing

Your service is then able to see if you are doing the same, better or worse than the national average for similar patients. The baseline period for calculating the national averages is July-December 2008 (report 6 period) and this will remain as such until January 2011. On a national basis this means the change in symptoms relative to the national average for the report 6 period will be zero.

- If X-CAS for your service > 0
on average, your patients' change in symptom was better than similar patients in the national database.
- If X-CAS for your service = 0
On average, your patients' change in symptom was about the same as similar patients in the national database.

- If X-CAS for your service < 0
On average, your patients' change in symptom was worse than similar patients in the national database

The mathematical algorithm and calculations are demonstrated below:

- Calculate the average change for all patients in the same phase and with the same symptom start score (each symptom class). This is the **expected** change.
- For each patient's phase, calculate their change in symptom score
- For each patient's phase, calculate the difference between their symptom score change and the average change for all patients in the same phase and with the same symptom start score
- Average across the service to produce the service's Symptom Casemix-Adjusted Score (i.e. PCAS)

Example:

Phase	PCPSS Pain start	PCPSS Pain change	Expected PCPSS Pain change	Difference
Stable	0	-1	-0.8	-0.2
Stable	1	0	-0.9	0.9
Unstable	3	2	1.6	0.4
Deteriorating	2	1	1.4	-0.4
PCAS = 0.175 [(-0.2+0.9+0.4-0.4)/4]				

If you would like further clarification regarding any of the analysis throughout this report, please contact PCOC at pcoc@uow.edu.au.

Acknowledgements

Contributions

PCOC wishes to acknowledge the valuable contribution made by:

- Members of the Management Advisory Board of PCOC
- The many staff from palliative care services who have spent considerable time collecting, collating and correcting the data and without whose effort this report would not be possible
- The PCOC staff at the Centre for Health Service Development, University of Wollongong, for the analysis and reporting of the data
- The PCOC Quality Improvement Facilitators for working closely with services to support the data collection and data quality improvement processes
- The Australian Government Department of Health and Ageing for their funding of this initiative

Disclaimer

PCOC has made every effort to ensure that the data used in this report are accurate. Data submitted to PCOC are checked for anomalies and services are asked to re-submit data prior to the production of the PCOC report. We would advise readers to use their professional judgement in considering all information contained in this report.

Copyright

This work is copyright. It may be produced in whole or in part for study or training purposes subject to the inclusion of an acknowledgement of the source. It is not for commercial usage or sale. Reproduction for purposes other than those above requires the written permission of PCOC.