

Queensland

# Patient Outcomes in Palliative Care

July – December 2012

Report 14

May 2013










# About the Palliative Care Outcomes Collaboration (PCOC)

PCOC is a unique national program that utilises standardised clinical assessment tools to measure and benchmark patient outcomes in palliative care. Participation in PCOC is voluntary and can assist palliative care service providers to improve practice and meet the Palliative Care Australia (PCA) *Standards for Providing Quality Palliative Care for all Australians*. This is achieved via the PCOC dataset; a multi-purpose framework designed to:

- provide clinicians with an approach to systematically assess individual patient experiences
- define a common clinical language to streamline communication between palliative care providers
- facilitate the routine collection of national palliative care data to drive quality improvement through reporting and benchmarking

The PCOC dataset includes the clinical assessment tools: Palliative Care Phase, Palliative Care Problem Severity Score (PCPSS), Symptom Assessment Scale (SAS), Australia-modified Karnofsky Performance Status Scale (AKPS) and Resource Utilisation Groups – Activities of Daily Living (RUG-ADL).

PCOC has divided Australia into four zones for the purpose of engaging with palliative care service providers. Each zone is represented by a chief investigator from one of the four collaborative centres. The four PCOC zones and their respective chief investigators are:

	Central Zone		<b>Professor Kathy Eagar</b> , Australian Health Services Research Institute, University of Wollongong
	North Zone		<b>Professor Patsy Yates</b> , Institute of Health and Biomedical Innovation, Queensland University of Technology
	South Zone		<b>Professor David Currow</b> , Department of Palliative and Supportive Services, Flinders University
	West Zone		<b>Assistant Professor Claire Johnson</b> , Cancer and Palliative Care Research and Evaluation Unit, University of WA

Each zone is also represented by one or more quality improvement facilitators, whose role includes supporting services to participate in PCOC and facilitating ongoing service development and quality improvement.

The National office is located within the Australian Health Services Research Institute at the University of Wollongong. If you would like more information about PCOC please visit our website [www.pcoc.org.au](http://www.pcoc.org.au) or email us at [pcoc@uow.edu.au](mailto:pcoc@uow.edu.au) or phone (02) 4221 4411.

*“PCOC is an excellent example of a national and voluntary programme using benchmarking to measure outcomes in palliative care”*

PRISMA (Reflecting the Positive Diversities of European Priorities for Research and Measurement in End-of-Life Care) in their publication

*Outcome Measurement in Palliative Care – The Essentials*

## Contents

Introduction.....	1
Section 1 – Summary of data included in this report.....	2
1.1 Data summary .....	2
1.2 Data Item Completion .....	3
Section 2 – Benchmark summary.....	5
2.1 QLD at a glance.....	5
2.2 National benchmark profiles.....	6
Outcome measure 1 – Time from referral to first contact.....	7
Outcome measure 2 – Time in unstable phase.....	9
Outcome measure 3 – Change in pain (SAS pain) .....	11
Section 3 – Outcome measures in detail.....	15
3.1 Outcome measure 1 – Time from referral to first contact.....	15
3.2 Outcome measure 2 – Time in unstable phase.....	17
3.3 Outcome measure 3 – Change in pain .....	19
3.4 Outcome measure 4 – Average improvement on the 2008 baseline national average (X-CAS).....	22
Section 4 - Descriptive analysis.....	25
4.1 Profile of palliative care patients.....	26
4.2 Profile of palliative care episodes.....	30
4.3 Profile of palliative care phases.....	33
Appendix A – Data scoping method .....	45
Appendix B – X-CAS technical notes.....	46
Acknowledgements .....	47

## List of Tables

Table 1	Number and percentage of patients, episodes and phases by setting.....	2
Table 2	Item completion (per cent complete) - patient level.....	3
Table 3	Item completion by setting (per cent complete) - episode level.....	3
Table 4	Item completion by setting (per cent complete) - phase level.....	4
Table 5	Summary of outcome measures 1-3 by setting.....	5
Table 6	Summary of outcome measure 4: Average improvement on the 2008 baseline national average (X-CAS).....	5
Table 7	Time from referral to first contact by setting.....	15
Table 8	Time in unstable phase by setting and occurrence in episode.....	18
Table 9	Trends in Benchmark 3.1: Patients with absent/mild pain at phase start, remaining absent/mild at phase end (PCPSS) by setting.....	19
Table 10	Trends in Benchmark 3.2: Patients with moderate/severe pain at phase start, with absent/mild pain at phase end (PCPSS) by setting.....	19
Table 11	Trends in Benchmark 3.3: Patients with absent/mild distress from pain at phase start, remaining absent/mild at phase end (SAS) by setting.....	20
Table 12	Trends in Benchmark 3.4: Patients with moderate/severe distress from pain at phase start, with absent/mild distress at phase end (SAS) by setting.....	20
Table 13	Indigenous status.....	26
Table 14	Main language spoken at home.....	27
Table 15	Country of birth.....	28
Table 16	Primary diagnosis.....	29
Table 17	Age group by gender.....	30
Table 18	Referral source by setting.....	31
Table 19	Place of death – ambulatory & community setting.....	31
Table 20	Length of episode summary by setting.....	32
Table 21	Length of episode by setting.....	32
Table 22	Number of phases by phase type and setting.....	33
Table 23	Average phase length (in days) by phase type and setting.....	33
Table 24	How stable phases end – by setting.....	34
Table 25	How unstable phases end – by setting.....	35
Table 26	How deteriorating phases end – by setting.....	36
Table 27	How terminal phases end – by setting.....	37
Table 28	Profile of PC Problem Severity scores at beginning of phase by phase type – inpatient setting (percentages).....	38
Table 29	Profile of PC Problem Severity scores at beginning of phase by phase type – ambulatory and community settings (percentages).....	39
Table 30	Profile of Symptom Assessment Scale scores at beginning of phase by phase type – inpatient setting (percentages).....	40
Table 31	Profile of Symptom Assessment Scale scores at beginning of phase by phase type – ambulatory and community settings (percentages).....	41
Table 32	Australia-modified Karnofsky Performance Status (AKPS) at phase start by setting.....	42

## List of Figures

Figure 1 Percentage of patients contacted on the day of, or the day after referral – inpatient setting .....	7
Figure 2 Percentage of patients contacted on the day of, or the day after referral – ambulatory & community settings .....	8
Figure 3 Percentage of patients in the unstable phase for 3 days or less – inpatient setting .....	9
Figure 4 Percentage of patients in the unstable phase for 3 days or less – ambulatory & community settings .....	10
Figure 5 Percentage of patients with absent/mild distress from pain at phase start, remaining absent/mild at phase end – inpatient setting .....	11
Figure 6 Percentage of patients with absent/mild distress from pain at phase start, remaining absent/mild at phase end – ambulatory & community settings .....	12
Figure 7 Percentage of patients with moderate/severe distress from pain at phase start, with absent/mild distress from pain at phase end – inpatient setting .....	13
Figure 8 Percentage of patients with moderate/severe distress from pain at phase start, with absent/mild distress from pain at phase end – ambulatory & community settings .....	14
Figure 9 Trends in time from referral to first contact by setting .....	16
Figure 10 Trends in outcome measure 3 .....	21
Figure 11 Trends in outcome measure 4 – Palliative Care Problem Severity Score (PCPSS) .....	23
Figure 12 Trends in outcome measure 4 – Symptom Assessment Scale (SAS) .....	24
Figure 13 Stable phase progression – inpatient setting .....	34
Figure 14 Stable phase progression – ambulatory & community settings .....	34
Figure 15 Unstable phase progression – inpatient setting .....	35
Figure 16 Unstable phase progression – ambulatory & community settings .....	35
Figure 17 Deteriorating phase progression – inpatient setting .....	36
Figure 18 Deteriorating phase progression – ambulatory & community settings .....	36
Figure 19 Terminal phase progression – inpatient setting .....	37
Figure 20 Terminal phase progression – ambulatory & community settings .....	37
Figure 21 Total RUG-ADL at beginning of phase by phase type – inpatient setting .....	43
Figure 22 Total RUG-ADL at beginning of phase by phase type – ambulatory & community settings .....	44
Figure 23 Diagram of the PCOC data scoping method .....	45

# Introduction

PCOC aims to assist services to improve the quality of the palliative care they provide through the analysis and benchmarking of patient outcomes. In this, the fourteenth PCOC report, data submitted for the July - December 2012 period are summarised and patient outcomes benchmarked to enable participating services to assess their performance and identify areas in which they may improve.

This report is broken into four sections:

Section 1 provides a summary of the data included in this report.

Section 2 summarises each of the four outcome measures and presents national benchmarking results for a selection of these measures.

Section 3 presents a more detailed analysis of the outcome measures and benchmarks.

Section 4 provides descriptive analysis at each of the patient, episode and phase data levels.

In each of the four sections, data and analysis for Queensland is presented alongside the national figures for comparative purposes. The national figures reflect all palliative care services who submitted data for the July - December 2012 period. A full list of these services can be found at [www.pcoc.org.au](http://www.pcoc.org.au)

The four outcome measures included in this report were first introduced in the reporting period January to June 2009 (Report 7). There is strong sectoral support for national benchmarks and a consensus that such benchmarks can drive service innovation regardless of model of care. Benchmarking provides opportunities to understand the services that are provided, the outcomes patients experience and also to generate research opportunities focused on how to demonstrate variations in practice and outcomes.

Note some tables throughout this report may be incomplete. This is because some items may not be applicable to a particular service or it may be due to data quality issues. Please use the following key when interpreting the tables:

**na**     **The item is not applicable**

**u**       **The item was unavailable/unable to be calculated due to missing or invalid data.**

## Section 1 – Summary of data included in this report

### 1.1 Data summary

This report includes data from a total of 103 services. During the reporting period, data were provided for a total of 16,608 patients who between them had 20,679 episodes of care and 48,180 palliative care phases. These total numbers are determined by a data scoping method. This method looks at the phase level data first and includes all phases that ended within the current reporting period. The associated episodes and patients are then determined (Section A contains a more detailed explanation of this process). Table 1 shows the number of patients, episodes and phases included in this report – both for Queensland and nationally.

A consequence of the data scoping method is that it is likely that not all phases related to a particular episode are included in this report. Hence, the average number of phases per episode calculation shown in Table 1 may be an underestimate (due to episodes that cross-over 2 or more reporting periods) as it only includes phases that ended within the current reporting period.

**Table 1** Number and percentage of patients, episodes and phases by setting

Setting	Inpatient		Ambulatory & community		Total	
	QLD	All Services	QLD	All Services	QLD	All Services
Number of patients*	2,387	9,767	1,180	7,718	3,308	16,608
Number of episodes	2,852	11,280	1,366	9,399	4,218	20,679
Number of phases	6,276	28,401	2,233	19,779	8,509	48,180
Percentage of patients*	72.2	58.8	35.7	46.5	100	100
Percentage of episodes	67.6	54.5	32.4	45.5	100	100
Percentage of phases	73.8	58.9	26.2	41.1	100	100
Average number of phases per episode**	2.0	2.4	1.5	1.9	1.9	2.2

\* Patients seen in both settings are only counted once in the total column and hence numbers/percentages may not add to the total.

\*\* Average number of phases per episode is only calculated for closed episodes that started and ended within the reporting period and excludes bereavement phases.



## 1.2 Data Item Completion

Overall, the quality of data submitted to PCOC is very good and, as shown in Tables 2, 3 and 4 below, the rate of data completion is very high. In reviewing these tables, it is important to note that in some cases some data items are not required to be completed. For example, place of death is only required for ambulatory and community patients who have died. Hence the complete column in the following tables only refers to the percentage of complete records where the data item was relevant.

PCOC strongly encourages services to complete and submit the whole data set on every patient as non-completion may result in services being excluded from relevant benchmarking activities or erroneous conclusions being drawn. Low completion of data items may also distort percentages and graphs in some sections.

**Table 2 Item completion (per cent complete) - patient level**

Data item	QLD	All Services
Date of birth	100.0	100.0
Sex	99.4	99.8
Indigenous status	98.3	97.0
Country of birth	97.4	95.7
Main language	96.4	93.9
Primary diagnosis	97.8	96.7

Note: This table is not split by setting to be consistent with the patient level analysis throughout this report.

**Table 3 Item completion by setting (per cent complete) - episode level**

Data item	Inpatient		Ambulatory & community		Total	
	QLD	All Services	QLD	All Services	QLD	All Services
Date of first contact/assessment	98.1	95.5	99.6	96.4	98.6	95.9
Referral date	98.3	96.9	99.8	99.3	98.8	98.0
Referral source	95.9	95.5	99.6	95.0	97.1	95.2
Mode of episode start	99.9	100.0	94.9	99.0	98.3	99.5
Accommodation at episode start	98.9	94.9	99.6	97.9	99.1	96.3
Episode end date	96.9	98.6	92.6	93.5	95.5	96.3
Mode of episode end	98.6	97.3	98.8	99.1	98.7	98.1
Accommodation at episode end	96.4	93.4	93.9	86.7	95.9	91.6
Place of death	na	na	91.6	93.8	91.6	93.8

**Table 4 Item completion by setting (per cent complete) - phase level**

Data item	Sub-Category (where applicable)	Inpatient		Ambulatory & community		Total	
		QLD	All Services	QLD	All Services	QLD	All Services
RUG-ADL at phase start	Bed mobility	100.0	100.0	100.0	98.4	100.0	99.3
	Toileting	100.0	100.0	100.0	97.9	100.0	99.1
	Transfers	100.0	100.0	100.0	97.3	100.0	98.8
	Eating	100.0	100.0	100.0	95.3	100.0	98.0
PC Problem Severity at phase start	Pain	90.6	82.5	100.0	97.8	93.2	89.0
	Other symptoms	85.4	90.3	100.0	97.5	89.5	93.3
	Psychological/spiritual	98.0	99.3	100.0	97.7	98.6	98.6
	Family/carer	98.0	99.3	100.0	97.5	98.6	98.5
Symptom Assessment Scale at phase start	Insomnia	85.9	93.5	98.7	94.2	89.4	93.8
	Appetite problems	85.9	93.5	98.7	95.1	89.4	94.2
	Nausea	85.9	93.5	98.7	97.1	89.4	95.0
	Bowel problems	85.9	93.4	98.7	95.9	89.4	94.5
	Breathing problems	85.9	93.5	98.7	96.9	89.4	94.9
	Fatigue	85.9	93.4	98.7	96.7	89.4	94.8
	Pain	85.9	93.5	98.7	98.0	89.4	95.4
Phase end reason	-	95.1	95.7	99.0	98.3	96.2	96.8
Karnofsky at phase start	-	99.7	94.6	100.0	98.8	99.8	96.4

## Section 2 – Benchmark summary

### 2.1 QLD at a glance

*Table 5 Summary of outcome measures 1-3 by setting*

Outcome measure	Description	Benchmark	Inpatient		Ambulatory & community	
			Your Score	Benchmark Met?	Your Score	Benchmark Met?
1. Time from referral to first contact	Benchmark 1: Patients contacted on the day of, or the day after referral	90%	94.1	Yes	55.8	No
2. Time in unstable phase	Benchmark 2: Patients in the unstable phase for 3 days or less	90%	60.2	No	44.7	No
3. Change in pain	Benchmark 3.1: PCPSS: Patients with absent/mild pain at phase start, remaining absent/mild at phase end	90%	90.7	Yes	79.7	No
	Benchmark 3.2: PCPSS: Patients with moderate/severe pain at phase start, with absent/mild pain at phase end	60%	54.2	No	42.3	No
	Benchmark 3.3: SAS: Patients with absent/mild distress from pain at phase start, remaining absent/mild at phase end	90%	89.1	No	73.3	No
	Benchmark 3.4: SAS: Patients with moderate/severe distress from pain at phase start, with absent/mild distress from pain at phase end	60%	47.3	No	35.1	No

*Table 6 Summary of outcome measure 4: Average improvement on the 2008 baseline national average (X-CAS)*

Clinical Tool	Description	Average improvement on baseline	Benchmark met?
PCPSS	Benchmark 4.1: Pain	0.20	Yes
	Benchmark 4.2: Other symptoms	0.40	Yes
	Benchmark 4.3: Family/carer	0.20	Yes
	Benchmark 4.4: Psychological/spiritual	0.21	Yes
SAS	Benchmark 4.5: Pain	0.30	Yes
	Benchmark 4.6: Nausea	0.10	Yes
	Benchmark 4.7: Breathing problems	0.43	Yes
	Benchmark 4.8: Bowel problems	0.20	Yes

→ The benchmark for measure 4 is zero.

For more information on the outcome measures and benchmarks, see Section 3 and Appendix B

## 2.2 National benchmark profiles

In this section, the national profiles for selected benchmarks are split by setting (inpatient and ambulatory & community) and presented graphically.

The selected benchmarks included are:

- Benchmark 1 Patients contacted on the day of, or the day after referral
- Benchmark 2 Patients in the unstable phase for 3 days or less
- Benchmark 3.3 SAS: Patients with absent/mild distress from pain at phase start, remaining absent/mild at phase end
- Benchmark 3.4 SAS: Patients with moderate/severe distress from pain at phase start, with absent/mild distress from pain at phase end

The national profile graphs below allow Queensland services to see how you are performing in comparison to other palliative care services participating in PCOC. In each graph, the shaded region describes the national profile for that outcome measure. Queensland services are highlighted as dots on the graph. The red line on the graph indicates the benchmark for that outcome measure.

## Outcome measure 1 – Time from referral to first contact

### Benchmark 1

Figure 1 Percentage of patients contacted on the day of, or the day after referral – inpatient setting

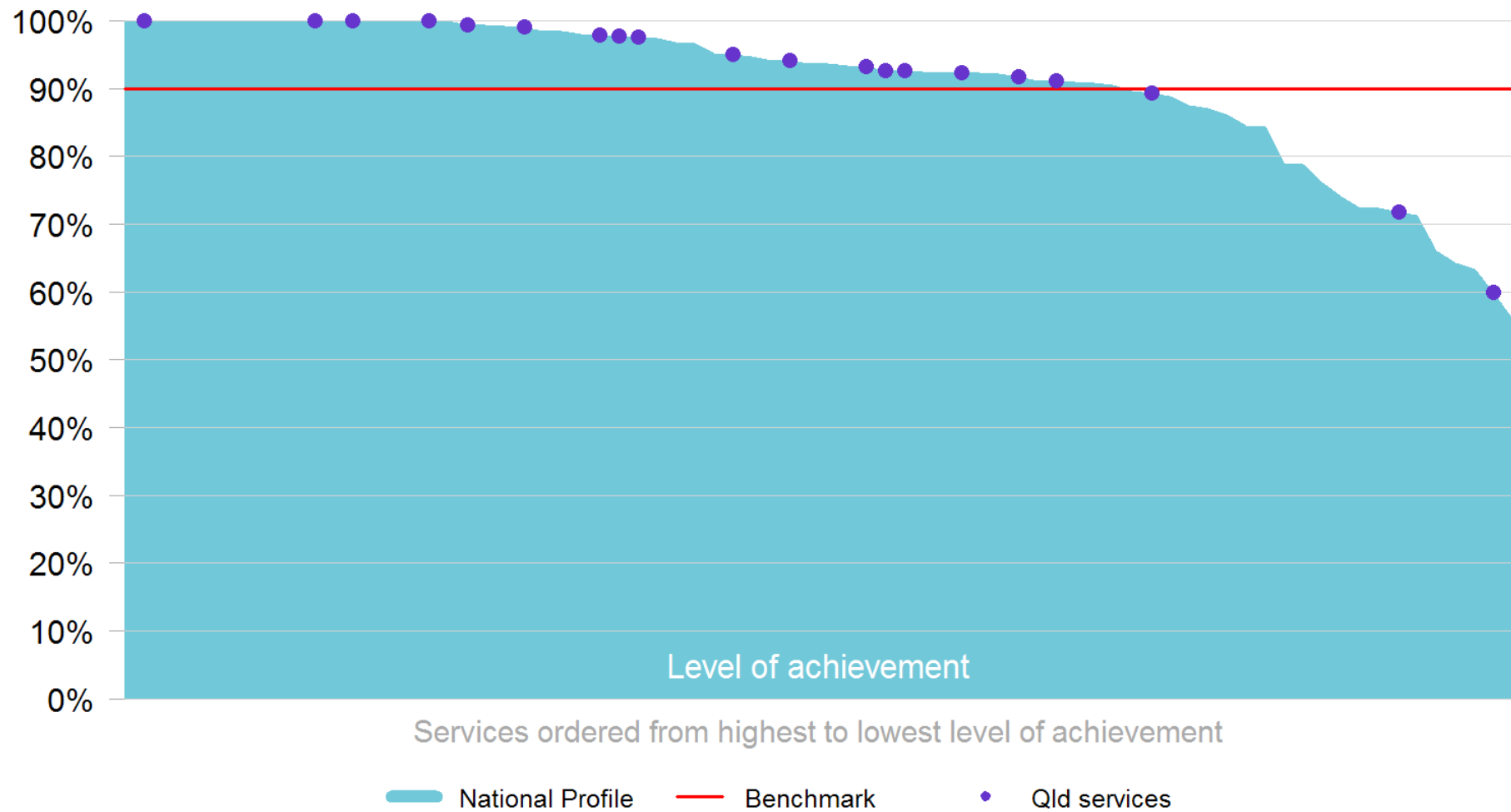
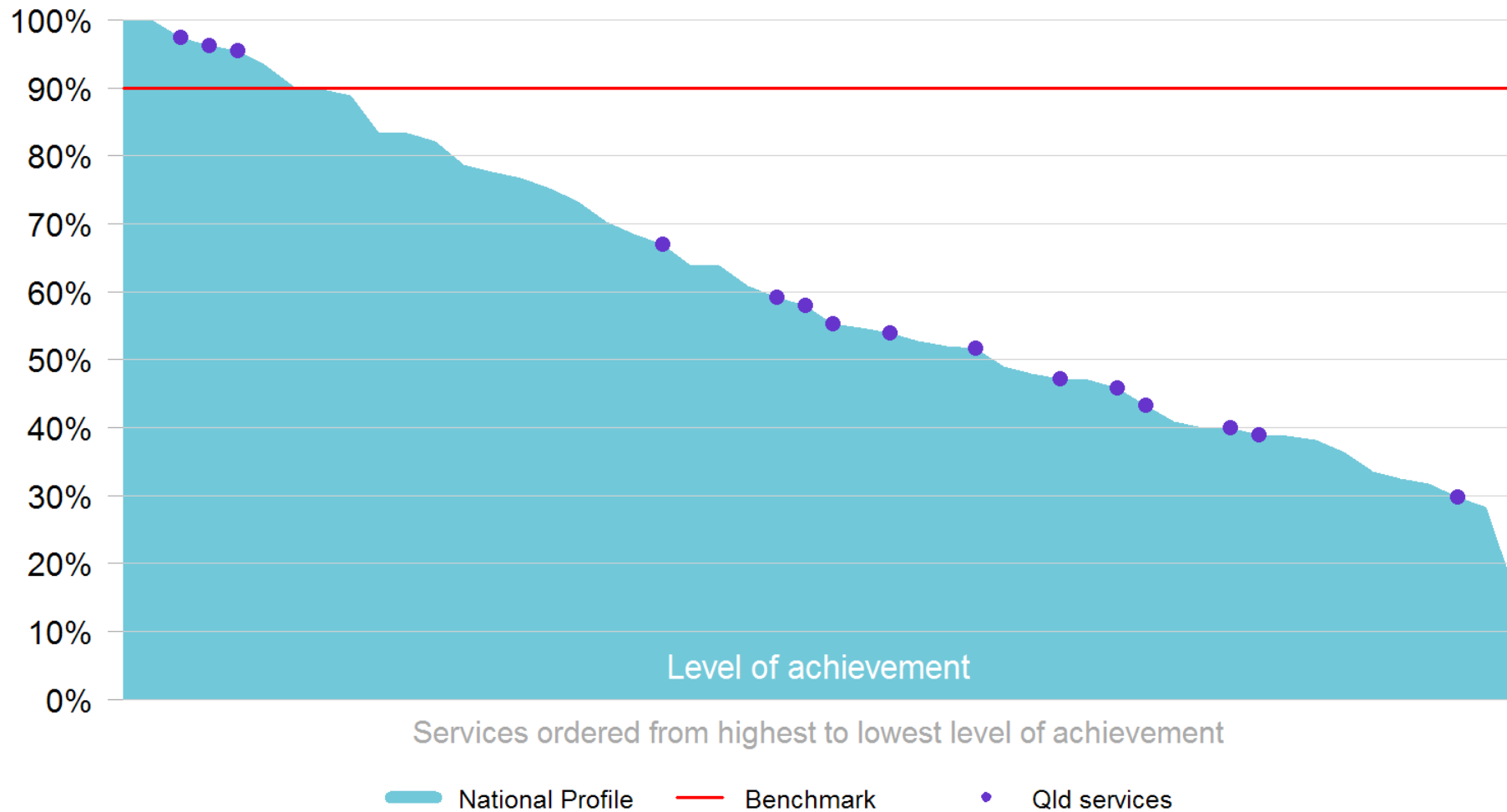


Figure 2 Percentage of patients contacted on the day of, or the day after referral – ambulatory & community settings



## Outcome measure 2 – Time in unstable phase

### Benchmark 2

Figure 3 Percentage of patients in the unstable phase for 3 days or less – inpatient setting

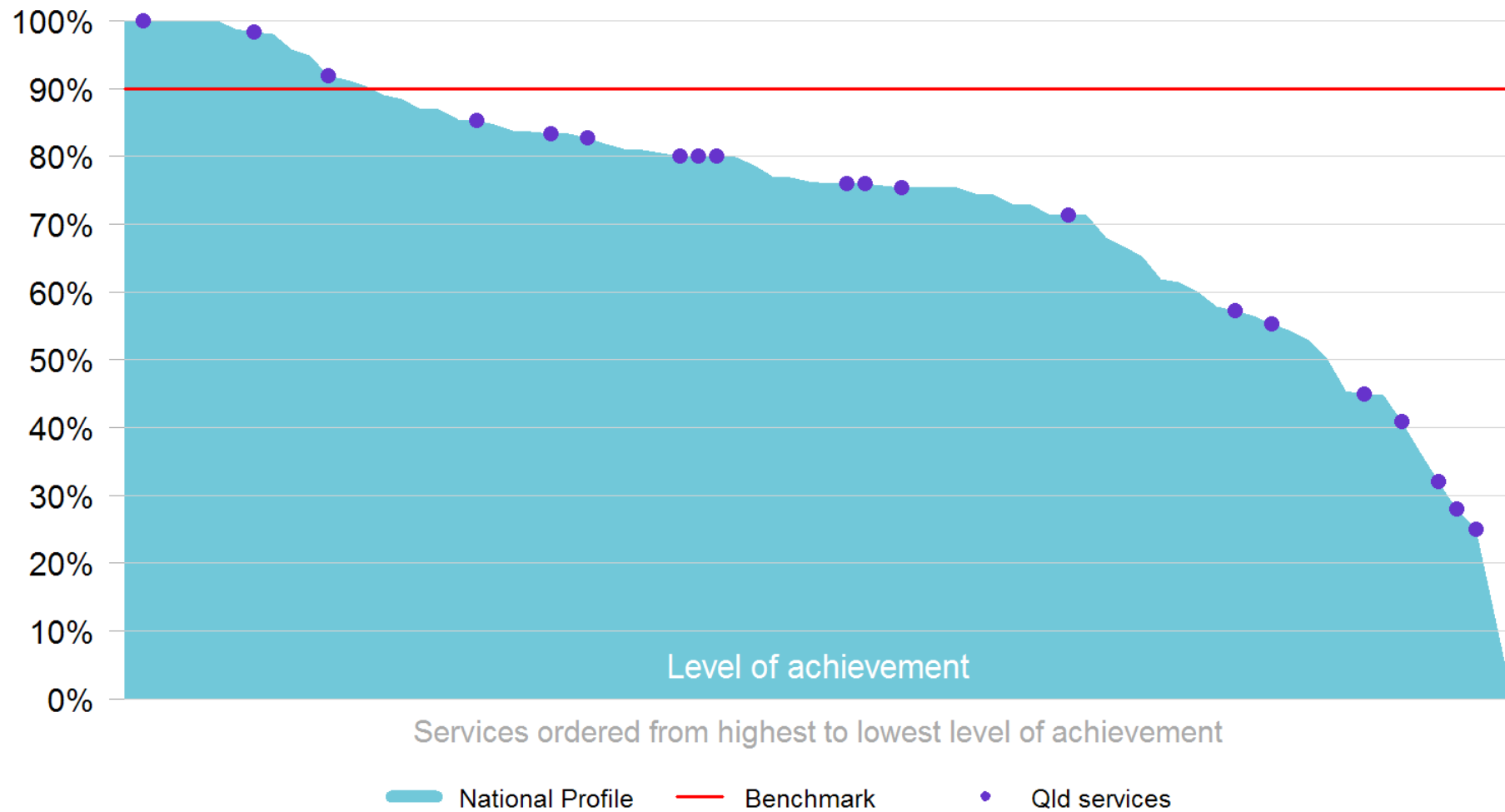
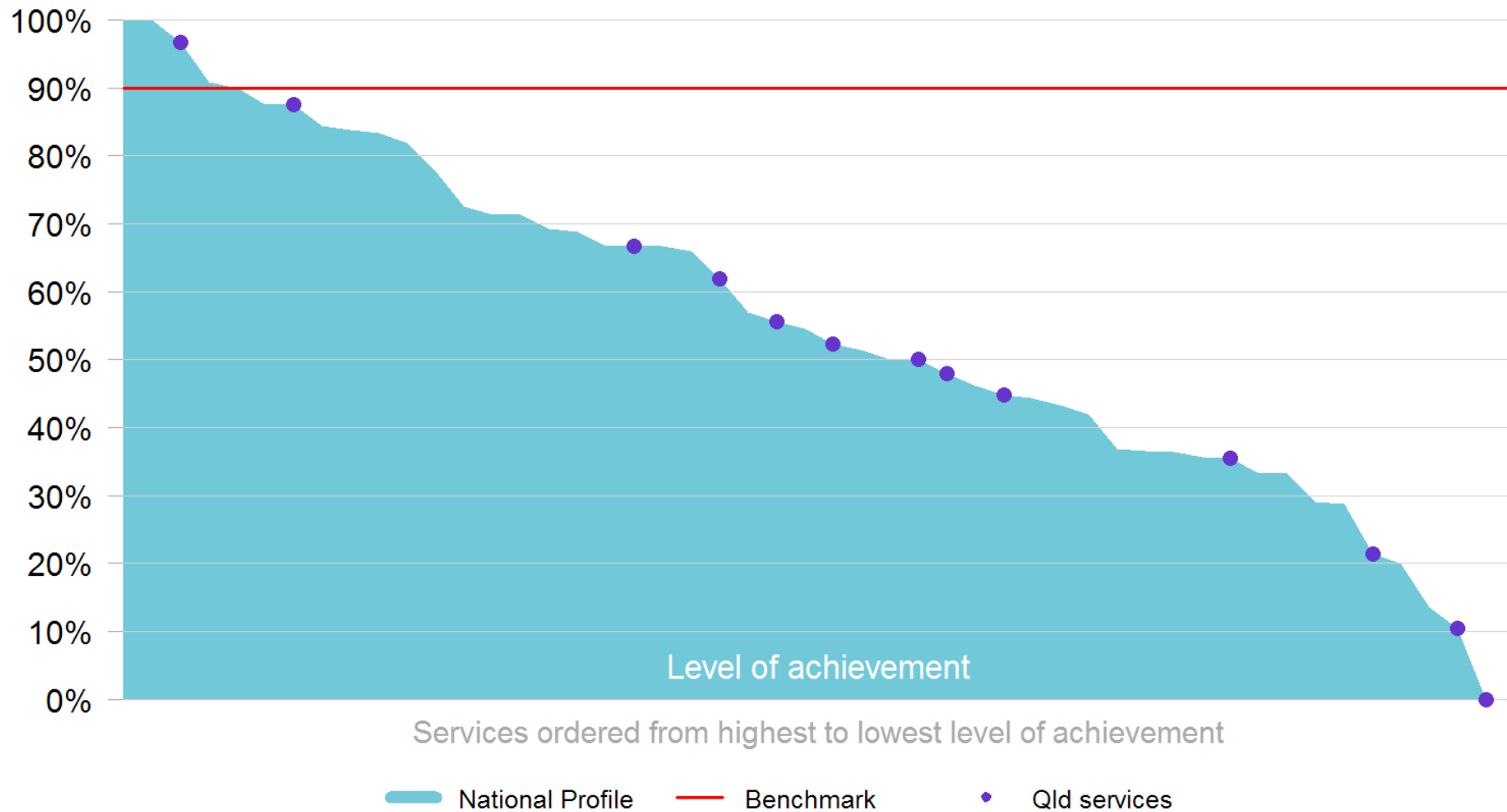


Figure 4 Percentage of patients in the unstable phase for 3 days or less – ambulatory & community settings

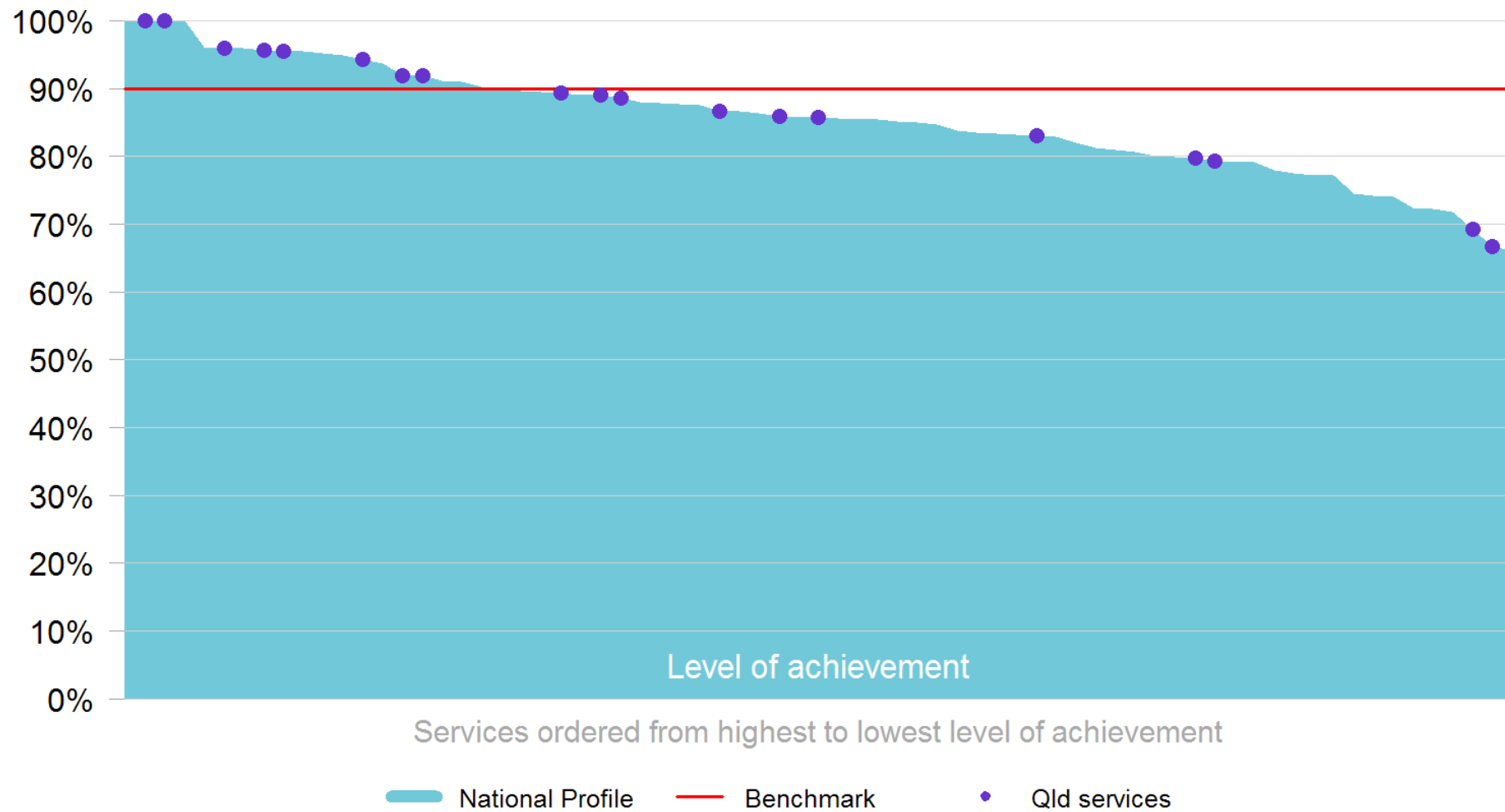




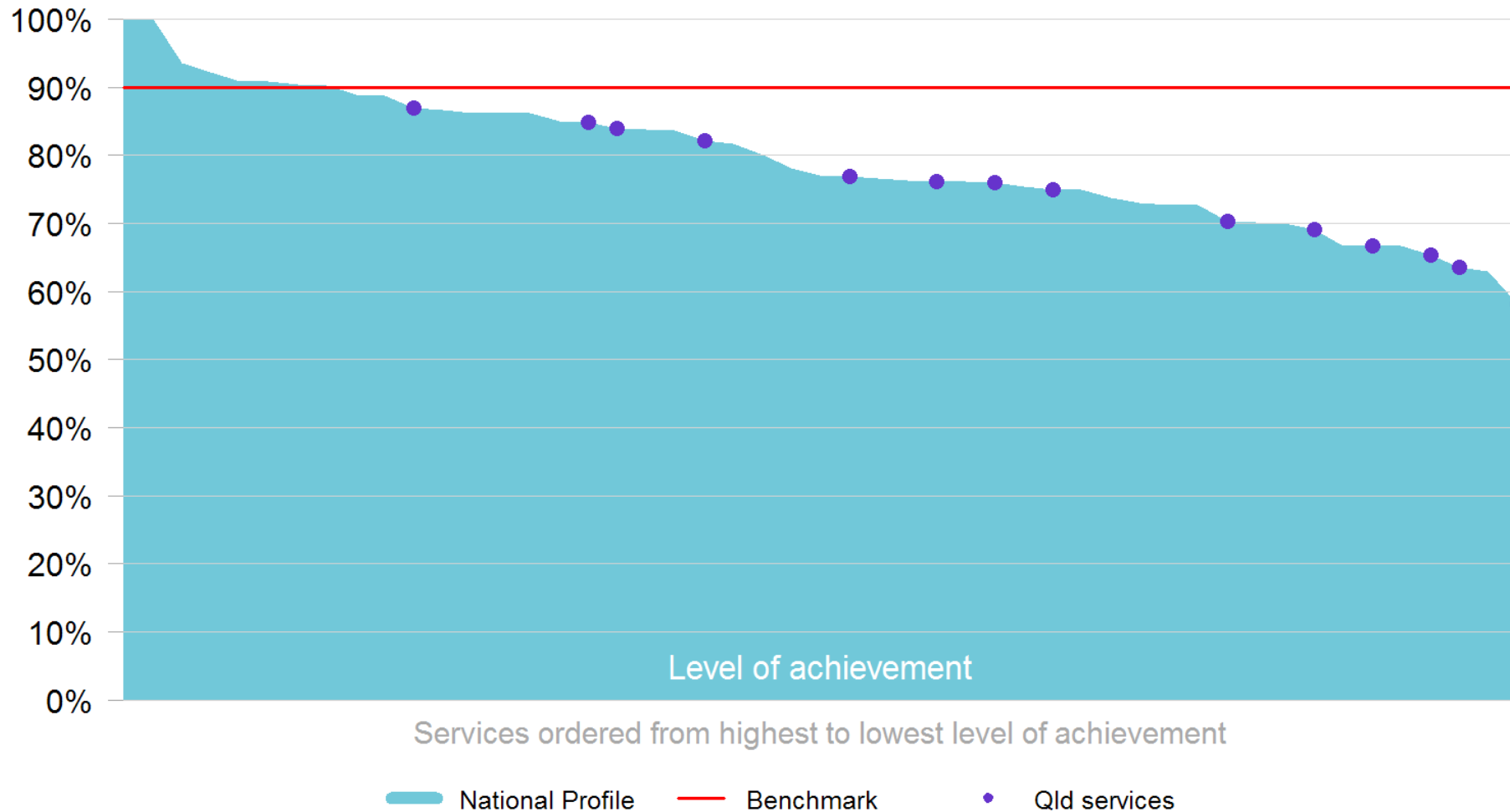
**Outcome measure 3 – Change in pain (SAS pain)**

**Benchmark 3.3**

*Figure 5 Percentage of patients with absent/mild distress from pain at phase start, remaining absent/mild at phase end – inpatient setting*



*Figure 6 Percentage of patients with absent/mild distress from pain at phase start, remaining absent/mild at phase end – ambulatory & community settings*



**Benchmark 3.4**

*Figure 7 Percentage of patients with moderate/severe distress from pain at phase start, with absent/mild distress from pain at phase end – inpatient setting*

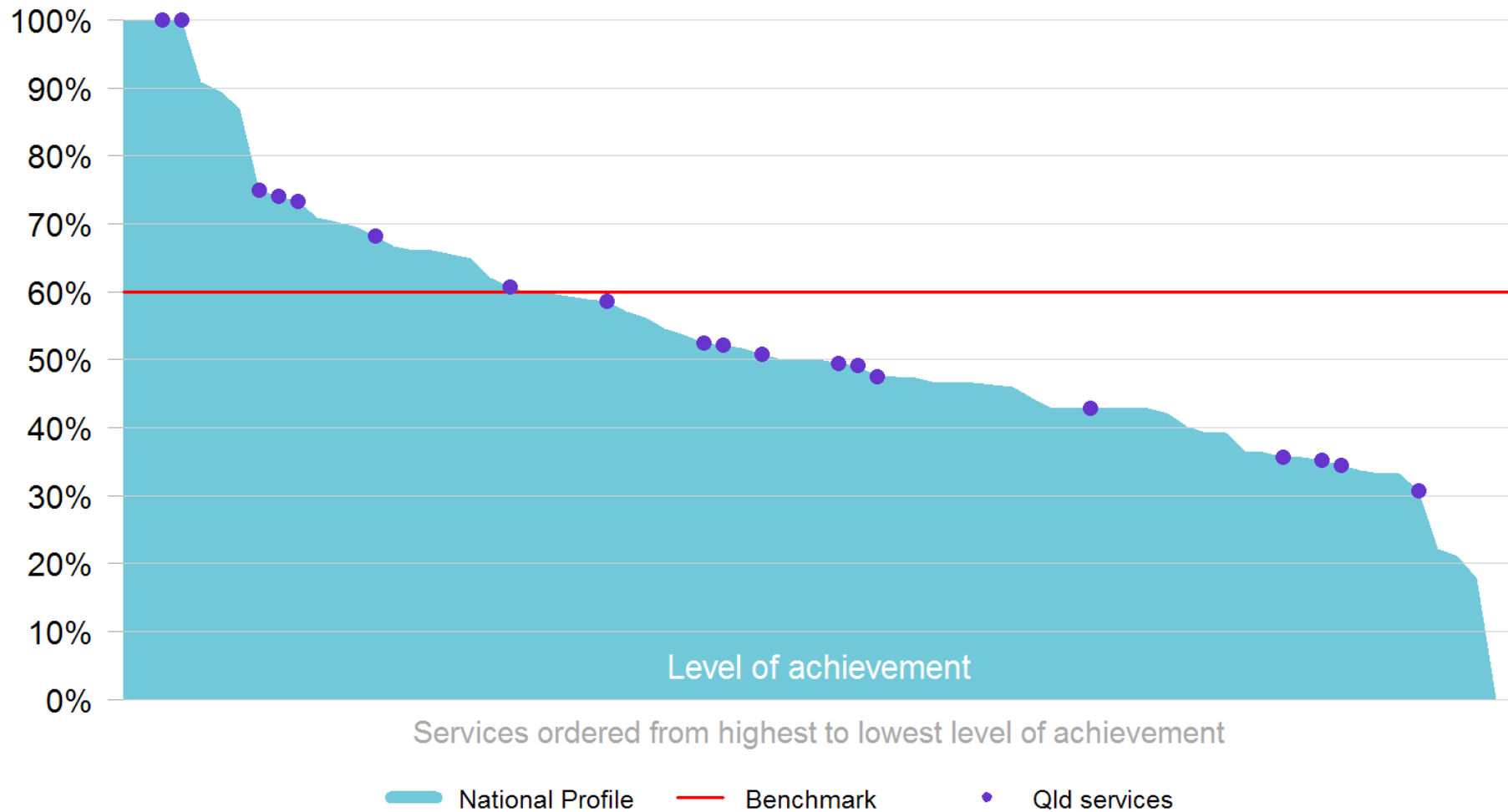
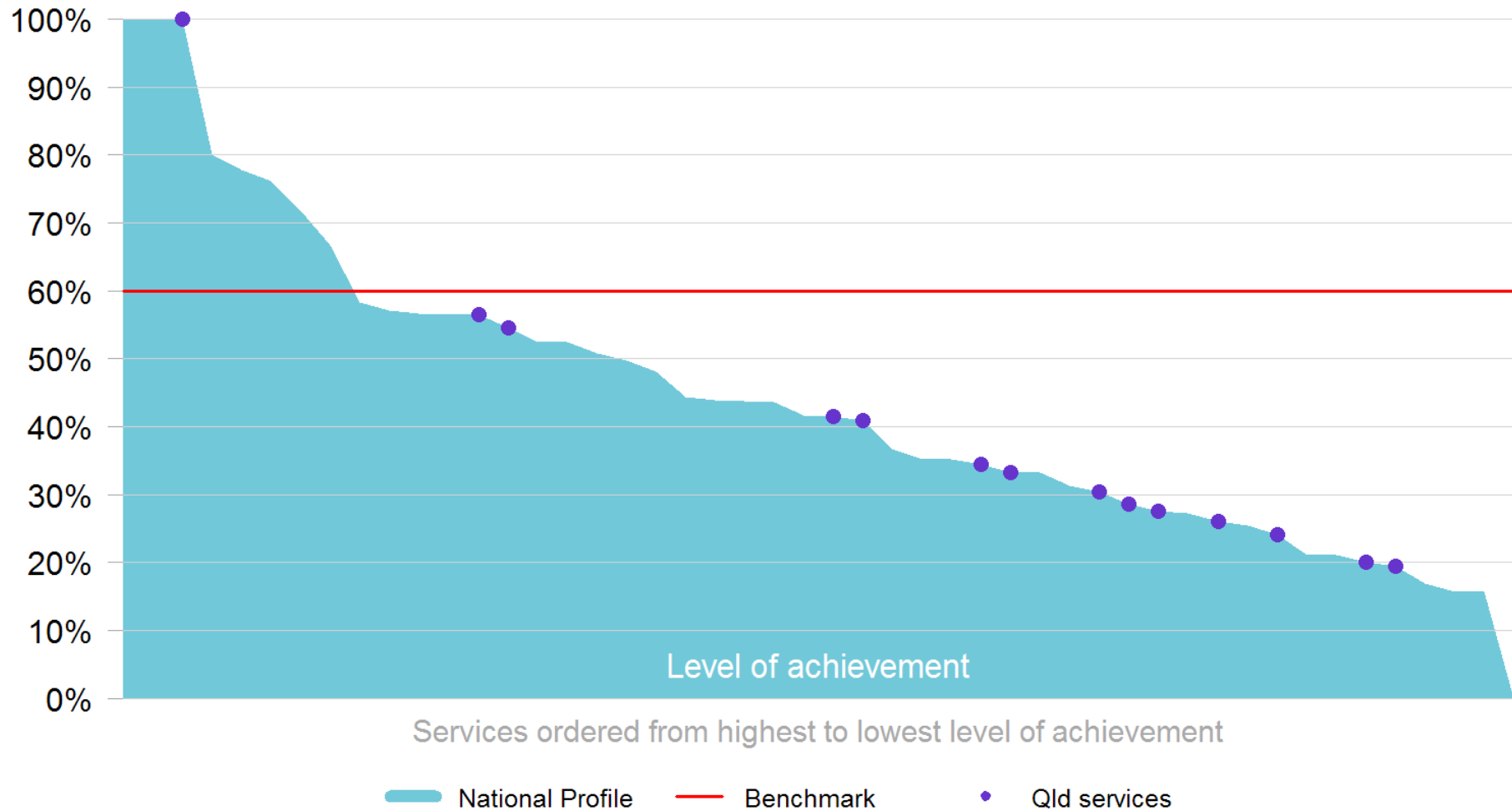


Figure 8 Percentage of patients with moderate/severe distress from pain at phase start, with absent/mild distress from pain at phase end – ambulatory & community settings



## Section 3 – Outcome measures in detail

### 3.1 Outcome measure 1 – Time from referral to first contact

Time from referral to first contact reports responsiveness of palliative care services to patient needs. This benchmark was set after consultation with participants at the PCOC national benchmarking workshops in 2009. Participants acknowledged that, whilst there is wide variation in the delivery of palliative care across the country, access to palliative care should be measured based on patient need rather than service availability. As a result, services operating 5 days a week (Monday-Friday) are not distinguished from services operating 7 days a week (all services are being benchmarked together).

**Benchmark 1:** This measure relates to the time taken for patients to be contacted and clinically assessed, once the palliative care team has received the patient’s referral. To meet the benchmark for this measure, at least 90% of patients must be contacted on the same day of, or the following day of receipt of referral.

The time from referral to first contact is calculated as the time from the date of referral received to either the date of first contact (if provided) or the episode start date.

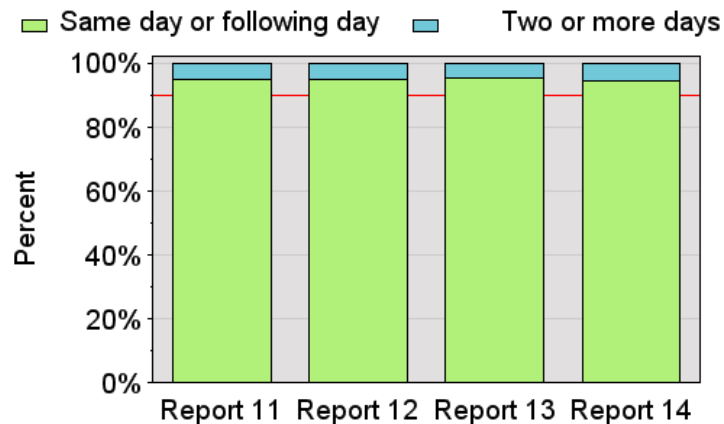
**Table 7 Time from referral to first contact by setting**

Time (in days)	Inpatient				Ambulatory & community			
	QLD	%	All Services	%	QLD	%	All Services	%
Same day or following day	2,638	94.1	9,939	90.9	761	55.8	4,947	53.0
2-7 days	143	5.1	811	7.4	447	32.8	3,118	33.4
8-14 days	9	0.3	94	0.9	88	6.5	775	8.3
Greater than 14 days	13	0.5	91	0.8	67	4.9	493	5.3
Average	1.1	na	1.3	na	2.6	na	2.8	na
Median	1	na	1	na	1	na	1	na

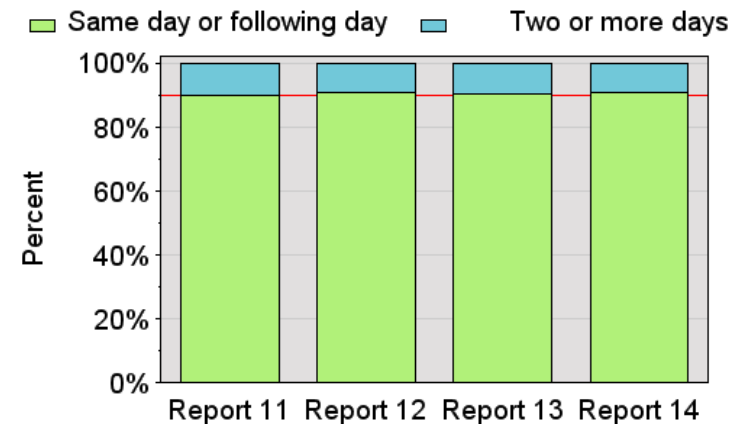
Note: Episodes where referral date was not recorded are excluded from the table. In addition, all records where time from referral to first contact was greater than 7 days were considered to be atypical and were assumed to equal 7 days for the purpose of calculating the average and median time.

Figure 9 Trends in time from referral to first contact by setting

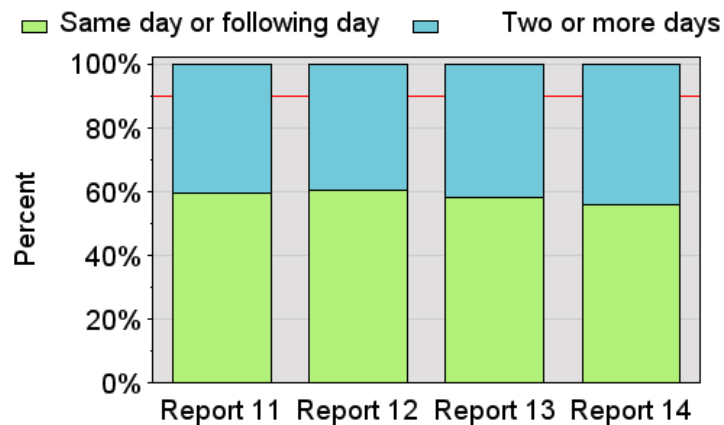
Inpatient setting for Queensland



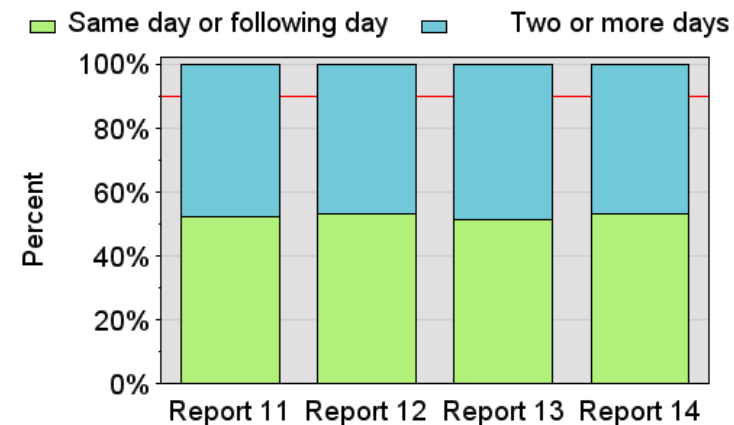
Inpatient setting for all services



Ambulatory & community settings for Queensland



Ambulatory & community settings for all services



### 3.2 Outcome measure 2 – Time in unstable phase

The unstable phase type, by nature of its definition, alerts clinical staff to the need for urgent changes to the patient’s plan of care or that emergency intervention is required. Those patients assessed to be in the unstable phase require intense review for a short period of time. An unstable phase is triggered if:

- a patient experiences a new, unanticipated problem, and/or
- a patient experiences a rapid increase in the severity of an existing problem, and/or
- a patient’s family/carers experience a sudden change in circumstances that adversely impacts the patients care

Unstable phases are ended in one of two ways:

- A new plan of care has been put in place, has been reviewed and does not require any additional changes. This does not necessarily mean that the symptom/crisis has been fully resolved. However, the clinical team will have a clear diagnosis and a plan for the patient’s care. In this situation, the patient will move to either the stable or deteriorating phase
- The patient is likely to die within a matter of days. In this situation, the patient will be moved into the terminal phase

In previous PCOC reports, there were three benchmarks relating to the time a patient spent in the unstable phase. This report sees the three replaced by one:

**Benchmark 2:** This benchmark relates to time that a patient spends in the unstable phase. To meet this benchmark, at least **90%** of unstable phases must last for 3 days or less.

#### Why has this benchmark changed?

Feedback from services attending the 2012 PCOC Benchmarking workshops was that benchmarks 2.1 & 2.2 should be combined as the first phase/not first phase split did not provide any additional information. There was also general feedback that the ‘within 7 days’ timeframe did not represent best practice and that it should be reduced. PCOC undertook analysis to determine the target time frame by looking at the top 10 services participating during January – June 2012. This analysis identified ‘3 days or less’ as the target time frame when 90% was used as the benchmark. Benchmark 2.3 (median time) is now considered to be redundant and has been removed from the suite of PCOC benchmarks.

Table 8 presents descriptive data for the new benchmark. Previous benchmarks 2.1 and 2.2 have also been included for comparison with results from previous reports.

**Table 8 Time in unstable phase by setting and occurrence in episode**

Setting	Occurrence of unstable phase	Number of unstable phases		Percent unstable for < 7 days		Percent unstable for 3 days or less	
		QLD	All Services	QLD	All Services	QLD	All Services
Inpatient	First phase of episode	1,322	5,304	80.1	89.6	58.9	70.8
	Not first phase of episode	269	2,224	85.5	91.8	66.5	76.3
	<b>Total unstable phases</b>	<b>1,591</b>	<b>7,528</b>	<b>81.0</b>	<b>90.3</b>	<b>60.2</b>	<b>72.4</b>
Ambulatory & community	First phase of episode	132	721	57.6	63.1	41.7	46.7
	Not first phase of episode	219	1,810	59.8	74.1	46.6	63.1
	<b>Total unstable phases</b>	<b>351</b>	<b>2,531</b>	<b>59.0</b>	<b>71.0</b>	<b>44.7</b>	<b>58.5</b>

**Interpretation hint:**

In Queensland a total of **1,591** patients in the **inpatient** setting were in the unstable phase. Of these unstable phases, **60.2%** remained for 3 days or less. This was **lower** than the **72.4%** seen across all participating services.

In Queensland a total of **351** patients in the **ambulatory/community** setting were in the unstable phase. Of these unstable phases, **44.7%** remained for 3 days or less. This was **lower** than the **58.5%** seen across all participating services.



### 3.3 Outcome measure 3 – Change in pain

Pain management is acknowledged as a core business of palliative care services. The Palliative Care Problem Severity Score (PCPSS) and Symptom Assessment Scale (SAS) provide two different perspectives of pain: the SAS is patient rated, while the PCPSS is clinician rated. There are two benchmarks related to each tool: one relating to the management of pain for patients with absent or mild pain, and the other relating to the management of pain for patients with moderate or severe pain. The PCPSS is rated from 0 to 3 (absent, mild, moderate and severe) whereas the SAS is rated on a scale of 0 to 10 (0 = absent and 10 = the worst possible). For the analysis in this report SAS scores have been grouped as 1-3 mild, 4-7 moderate and 8-10 severe.

Phase records must have valid start and end scores for the PCPSS and/or SAS clinical assessment tools to be included in the benchmarks.

**Benchmark 3.1:** This benchmark relates to patients who have absent or mild pain at the start of their phase of palliative care, as rated via the PCPSS clinical tool. To meet this benchmark, 90% of these phases must end with the patient still experiencing only absent or mild pain. Table 9 shows trends in this benchmark over the last four reports.

**Table 9 Trends in Benchmark 3.1: Patients with absent/mild pain at phase start, remaining absent/mild at phase end (PCPSS) by setting**

Setting		QLD				All Services			
		Report 11	Report 12	Report 13*	Report 14	Report 11	Report 12	Report 13*	Report 14
Inpatient	Number	1162	1311	1533	1751	5,153	5,577	7,362	8,738
	%	88.0	86.4	88.6	90.7	82.1	81.6	86.2	86.0
Ambulatory & community	Number	312	340	346	660	2,176	2,339	3,276	8,698
	%	76.3	74.7	72.5	79.7	75.1	77.5	80.0	83.4

**Benchmark 3.2:** This benchmark relates to patients who have moderate or severe pain at the start of their phase of palliative care, as rated via the PCPSS clinical tool. To meet this benchmark, 60% of these phases must end with the patient's pain reduced to being absent or mild. Table 10 shows trends in this benchmark over the last four reports.

**Table 10 Trends in Benchmark 3.2: Patients with moderate/severe pain at phase start, with absent/mild pain at phase end (PCPSS) by setting**

Setting		QLD				All Services			
		Report 11	Report 12	Report 13*	Report 14	Report 11	Report 12	Report 13*	Report 14
Inpatient	Number	562	575	581	593	1,858	1,986	2,220	2,457
	%	57.6	62.5	58.6	54.2	48.0	53.6	51.1	52.8
Ambulatory & community	Number	82	88	108	155	646	697	742	1,552
	%	53.2	47.3	45.4	42.3	57.3	55.4	48.3	51.6

**Benchmark 3.3:** This benchmark relates to patients who have reported an absent or mild level of distress due to pain at the start of their phase of palliative care, as rated via the SAS clinical tool. To meet this benchmark, 90% of these phases must end with the patient still experiencing an absent or mild level of distress due to pain. Table 11 shows trends in this benchmark over the last four reports.

**Table 11 Trends in Benchmark 3.3: Patients with absent/mild distress from pain at phase start, remaining absent/mild at phase end (SAS) by setting**

Setting		QLD				All Services			
		Report 11	Report 12	Report 13*	Report 14	Report 11	Report 12	Report 13*	Report 14
Inpatient	Number	940	1112	1268	1413	5,902	6,476	8,179	9,638
	%	87.5	87.6	87.6	89.1	81.8	82.5	84.5	85.3
Ambulatory & community	Number	287	304	307	531	2,566	2,816	4,112	8,221
	%	77.2	74.3	70.7	73.3	76.8	78.1	80.9	81.8

**Benchmark 3.4:** This benchmark relates to patients who have reported a moderate or severe level of distress due to pain at the start of their phase of palliative care, as rated via the SAS clinical tool. To meet this benchmark, 60% of these phases must end with the patient’s level of distress due to pain reduced to being absent or mild. Table 12 shows trends in this benchmark over the last four reports.

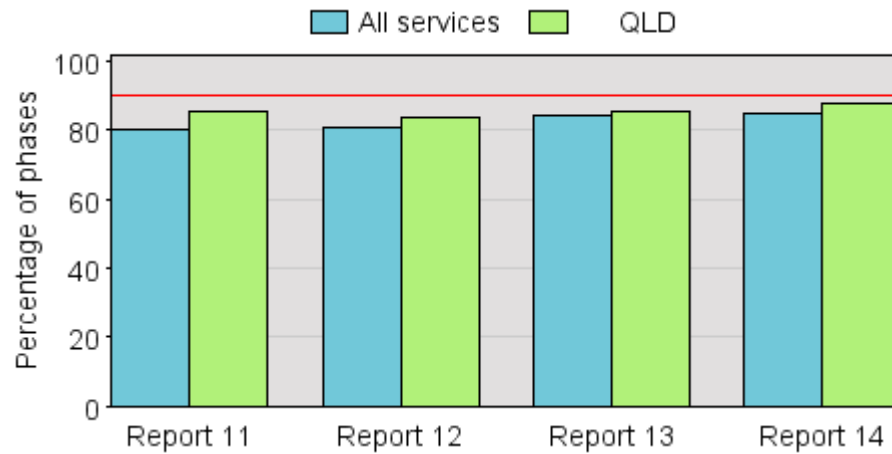
**Table 12 Trends in Benchmark 3.4: Patients with moderate/severe distress from pain at phase start, with absent/mild distress at phase end (SAS) by setting**

Setting		QLD				All Services			
		Report 11	Report 12	Report 13*	Report 14	Report 11	Report 12	Report 13*	Report 14
Inpatient	Number	523	511	624	661	2,159	2,216	2,789	2,870
	%	45.1	51.7	47.7	47.3	46.4	49.6	47.9	49.0
Ambulatory & community	Number	80	94	98	165	708	787	911	1,666
	%	46.8	43.5	36.3	35.1	57.0	56.2	45.1	46.8

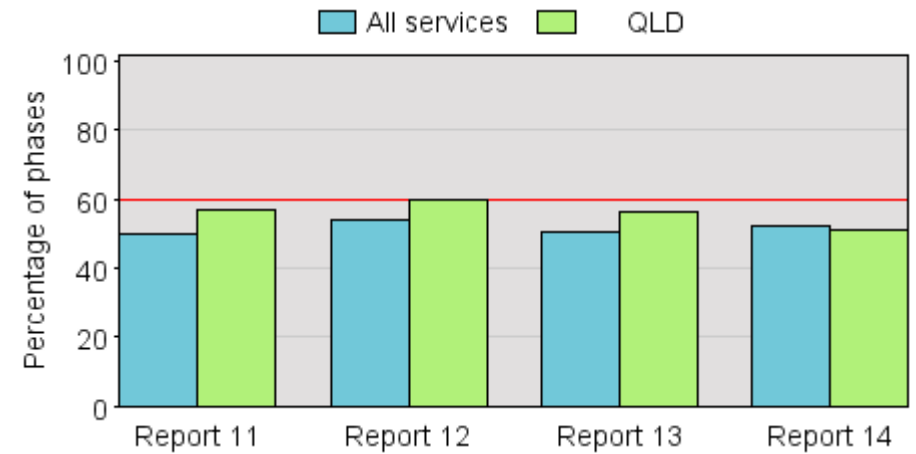
\* Following a review of the quality of the data submitted to PCOC for January – June 2012 an improvement was made to the calculation of the Change in Pain outcome measure. The new calculation included situations where episodes (and hence phases) end due to discharge or a change in the setting/type of care where the SAS and PCPSS pain assessments have been provided to PCOC. Services may notice a change in their benchmark scores from prior reports and should be cautious when comparing their scores.

**Figure 10 Trends in outcome measure 3**

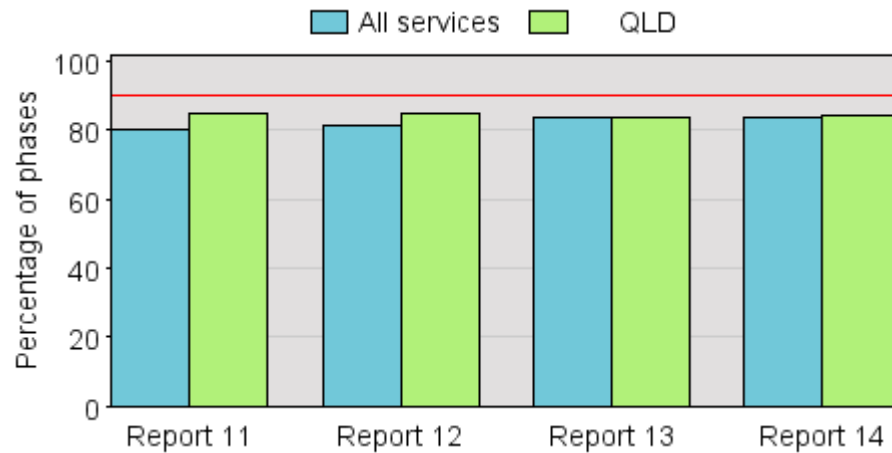
Benchmark 3.1: Absent/mild pain at both start and end of phase (using PCPSS)



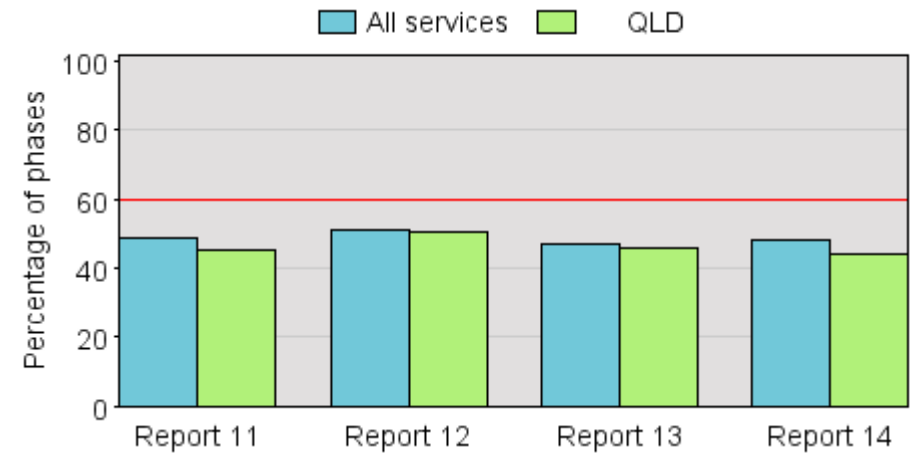
Benchmark 3.2: Mod/severe pain at start with absent/mild pain at end (using PCPSS)



Benchmark 3.3: Absent/mild pain at both start and end of phase (using SAS)



Benchmark 3.4: Mod/severe pain at start with absent/mild pain at end (using SAS)



### 3.4 Outcome measure 4 – Average improvement on the 2008 baseline national average (X-CAS)

Measure 4 includes a suite of case-mix adjusted scores used to compare the change in symptoms for similar patients i.e. patients in the same phase who started with the same level of symptom. Eight symptoms are included in this report:

PCPSS	SAS
4.1 Pain	4.5 Pain
4.2 Other symptoms	4.6 Nausea
4.3 Family/carer	4.7 Breathing problems
4.4 Psychological/spiritual	4.8 Bowel problems

The suite of benchmarks included in Measure 4 are generally referred to as X-CAS – CAS standing for *Case-mix Adjusted Score*, and the X to represent that multiple symptoms are included.

#### **How to interpret X-CAS:**

The X-CAS benchmarks are calculated relative to a baseline reference period (currently July-December 2008). As a result:

If X-CAS is greater than 0 then on average, your patients' change in symptom was better than similar patients in the baseline reference period.

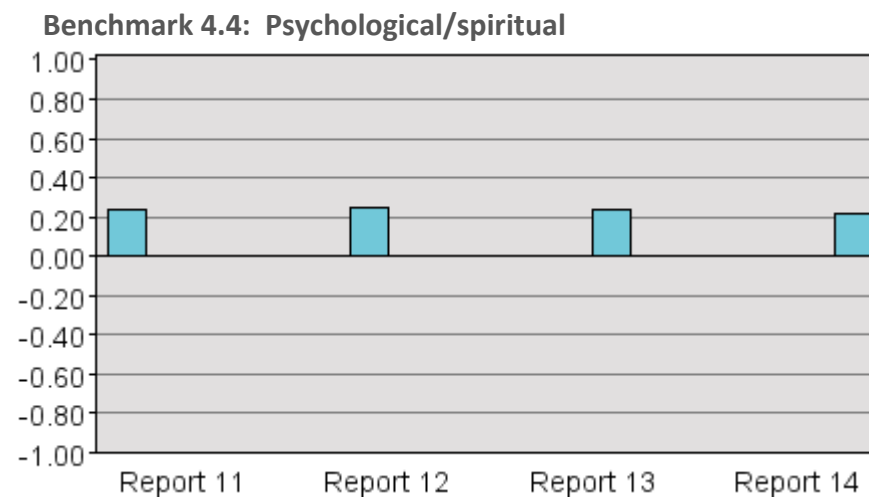
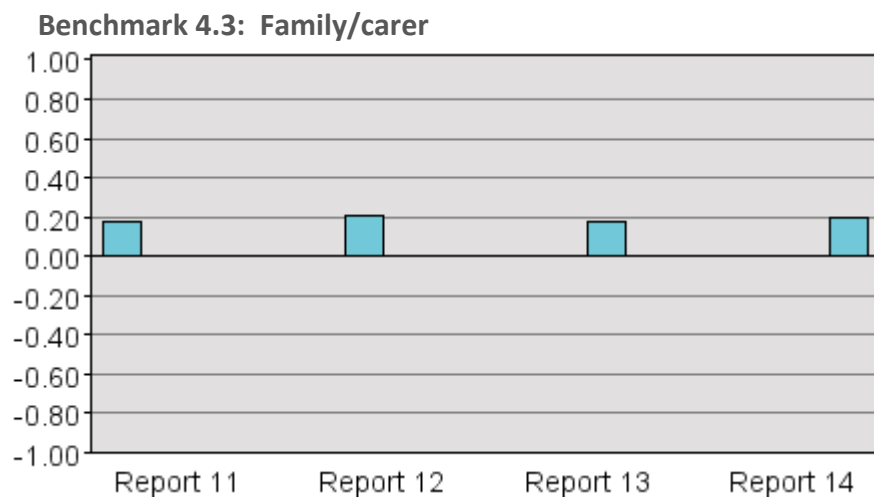
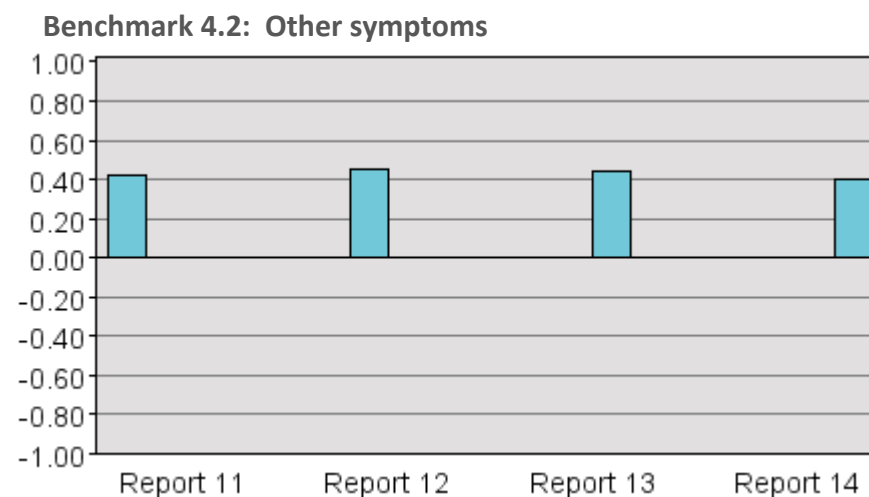
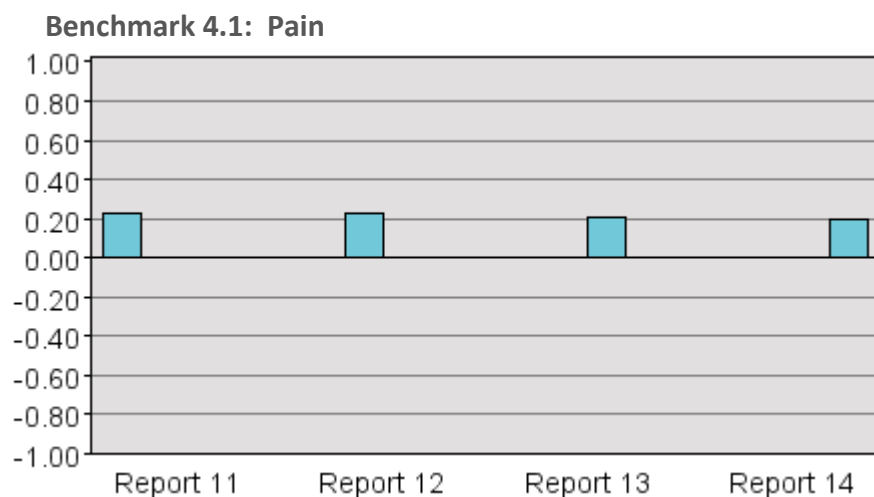
If X-CAS is equal to 0 then on average, your patients' change in symptom was about the same as similar patients in the baseline reference period.

If X-CAS is less than 0 then on average, your patients' change in symptom was worse than similar patients in the baseline reference period.

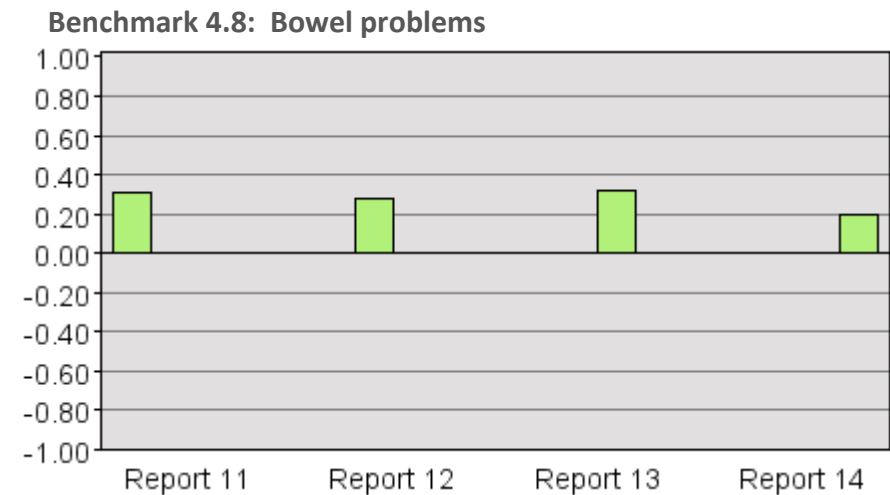
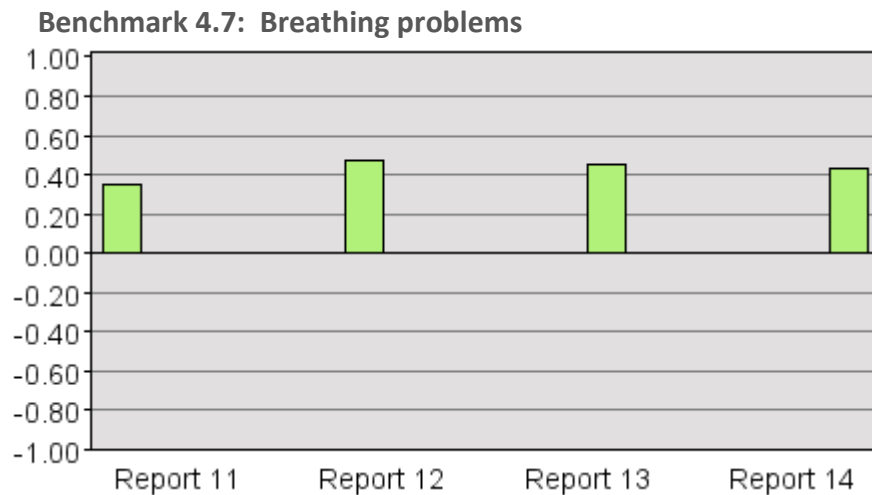
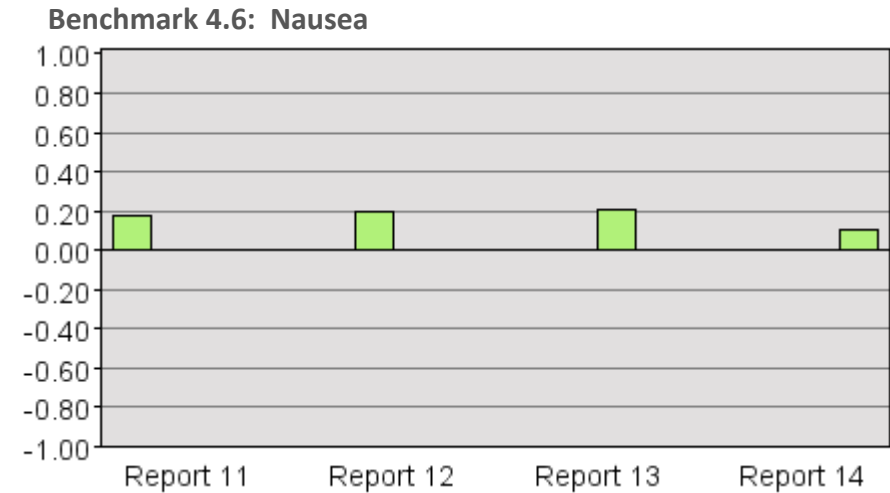
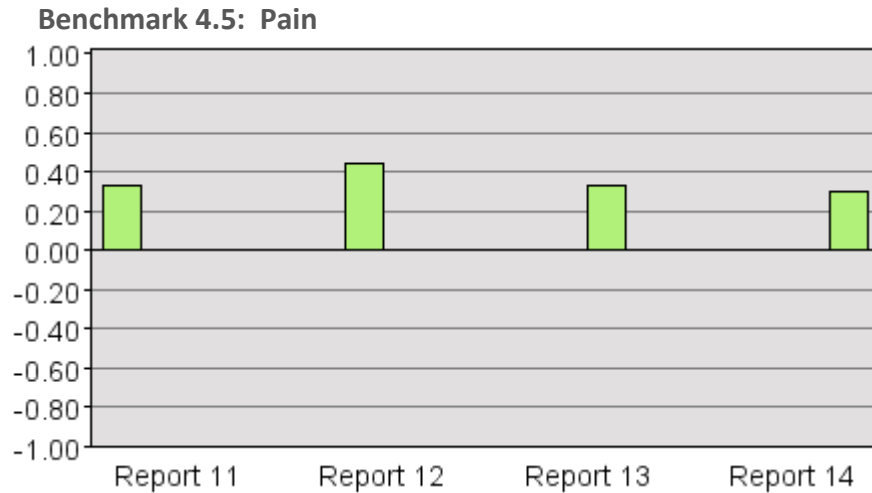
As the X-CAS measures look at change in symptom, they are only able to be calculated on phases which ended in phase change or discharge (as the phase end scores are required to determine the change). Bereavement phases are excluded from the analysis.

A more technical explanation of X-CAS is included in Appendix B.

**Figure 11 Trends in outcome measure 4 – Palliative Care Problem Severity Score (PCPSS)**



**Figure 12 Trends in outcome measure 4 – Symptom Assessment Scale (SAS)**



## Section 4 - Descriptive analysis

There are three levels of PCOC data items – patient, episode and phase.

The broad detail is found at the **patient level**, where the data items look at patient demographics.

At the **episode level**, the items focus on characterising each setting of palliative care. They also describe the reasons behind why and how palliative care episodes start/end, the level of support patients receive both before and after an episode and (where applicable) the setting in which the patient died.

The clinical focus of PCOC is at the **phase level**. The items at this level describe the patient's stage of illness, functional impairment as well as their levels of pain and other symptom distress. The items at the phase level are used to quantify patient outcomes, and are the focus of the PCOC benchmarks in the previous sections.

This section provides an overview of the data submitted by Queensland services at each level for the current reporting period. Summaries of the national data are included for comparative purposes.

Not all data items have been included in this report - you can contact your quality improvement facilitator if you would like more information.

## 4.1 Profile of palliative care patients

The information collected on each patient includes Indigenous status, sex, main language spoken at home and country of birth. Table 13 shows the Indigenous status for all patients in Queensland services and nationally. Non-disclosure of Indigenous status can result in cultural issues not being identified. A number of programs exist that can assist services to encourage Indigenous persons to identify. Information on such programs is available through your quality improvement facilitator.

**Table 13 Indigenous status**

Indigenous status	QLD	%	All Services	%
Aboriginal but not Torres Strait Islander origin	48	1.5	148	0.9
Torres Strait Islander but not Aboriginal origin	6	0.2	25	0.2
Both Aboriginal and Torres Strait Islander origin	3	0.1	16	0.1
Neither Aboriginal nor Torres Strait Islander origin	3,194	96.6	15,918	95.8
Not stated/inadequately described	57	1.7	501	3.0
<b>Total</b>	<b>3,308</b>	<b>100.0</b>	<b>16,608</b>	<b>100.0</b>



The following two tables show the main language spoken at home and the country of birth respectively for all patients in Queensland and nationally. To allow for comparison with the broader Australian community the list of languages in Table 14 is in descending order of the most frequently spoken languages according to the 2006 Census (e.g. Greek was the third most frequently spoken language in the 2006 Census). The same approach has been taken with Table 15 (e.g. Italy was the third highest country of birth in the 2006 Census). All other languages and countries have been grouped together to form the categories *All other languages* and *All other countries* respectively.

**Table 14 Main language spoken at home**

Main language spoken at home	QLD	%	All Services	%
English	3,095	93.6	14,097	84.9
Italian	23	0.7	299	1.8
Greek	12	0.4	162	1.0
Cantonese	5	0.2	119	0.7
Arabic (including Lebanese)	1	0.0	84	0.5
Mandarin	2	0.1	39	0.2
Vietnamese	4	0.1	72	0.4
Spanish	2	0.1	52	0.3
German	6	0.2	30	0.2
Hindi	0	0.0	10	0.1
Macedonian	0	0.0	84	0.5
Croatian	2	0.1	40	0.2
Korean	2	0.1	17	0.1
Turkish	0	0.0	31	0.2
Polish	6	0.2	36	0.2
All other languages	30	0.9	455	2.7
Not stated/inadequately described	118	3.6	981	5.9
<b>Total</b>	<b>3,308</b>	<b>100.0</b>	<b>16,608</b>	<b>100.0</b>

**Table 15 Country of birth**

Country of birth	QLD	%	All Services	%
Australia	2,516	76.1	10,144	61.1
England	237	7.2	1,247	7.5
New Zealand	77	2.3	222	1.3
China	11	0.3	171	1.0
Italy	49	1.5	683	4.1
Vietnam	8	0.2	104	0.6
India	7	0.2	88	0.5
Scotland	39	1.2	245	1.5
Philippines	4	0.1	33	0.2
Greece	11	0.3	339	2.0
Germany	44	1.3	221	1.3
South Africa	10	0.3	95	0.6
Malaysia	6	0.2	64	0.4
Netherlands	13	0.4	168	1.0
Lebanon	0	0.0	83	0.5
All other countries	191	5.8	2,207	13.3
Not stated/inadequately described	85	2.6	494	3.0
<b>Total</b>	<b>3,308</b>	<b>100.0</b>	<b>16,608</b>	<b>100.0</b>

Table 16 presents a breakdown of malignant and non-malignant diagnosis for the patients for Queensland services and at the national level.

**Table 16 Primary diagnosis**

Diagnosis category	Primary diagnosis	QLD	% of category	% of total	All Services	% of category	% of total	
Malignant	Bone and soft tissue	44	1.7	1.3	182	1.4	1.1	
	Breast	227	8.5	6.9	1,032	8.0	6.2	
	CNS	45	1.7	1.4	252	1.9	1.5	
	Colorectal	306	11.5	9.3	1,473	11.4	8.9	
	Gynaecological	152	5.7	4.6	664	5.1	4.0	
	Haematological	161	6.1	4.9	731	5.7	4.4	
	Head and neck	159	6.0	4.8	671	5.2	4.0	
	Lung	557	21.0	16.8	2,780	21.5	16.7	
	Pancreas	162	6.1	4.9	839	6.5	5.1	
	Prostate	211	7.9	6.4	879	6.8	5.3	
	Skin	120	4.5	3.6	499	3.9	3.0	
	Other GIT	181	6.8	5.5	1,245	9.6	7.5	
	Other urological	126	4.7	3.8	584	4.5	3.5	
	Other malignancy	140	5.3	4.2	745	5.8	4.5	
	Unknown primary	66	2.5	2.0	348	2.7	2.1	
	<b>All malignant</b>		<b>2,657</b>	<b>100.0</b>	<b>80.3</b>	<b>12,924</b>	<b>100.0</b>	<b>77.8</b>
	Non-malignant	Cardiovascular	148	25.6	4.5	641	20.4	3.9
HIV/AIDS		2	0.3	0.1	7	0.2	0.0	
Kidney failure		63	10.9	1.9	327	10.4	2.0	
Neurological disease		130	22.5	3.9	570	18.2	3.4	
Respiratory failure		95	16.4	2.9	539	17.2	3.2	
Other non-malignancy		140	24.2	4.2	1,056	33.6	6.4	
<b>All non-malignant</b>			<b>578</b>	<b>100.0</b>	<b>17.5</b>	<b>3,140</b>	<b>100.0</b>	<b>18.9</b>
Not Stated	-	73	100.0	2.2	544	100.0	3.3	

## 4.2 Profile of palliative care episodes

An episode of care is a period of contact between a patient and a palliative care service that is provided by one palliative care service and occurs in one setting – for the purposes of this report, either as an inpatient or ambulatory and community patient.

An episode of palliative care begins on the day the patient is assessed using the five PCOC assessment tools either by face to face or phone contact with the palliative care service and there is agreement between the patient and the service.

An episode of palliative care ends when:

- the principal clinical intent of the care changes and the patient is no longer receiving palliative care
- the patient is formally separated from the hospital/hospice/community or,
- the patient dies

Table 17 below presents the number and percentage of episodes by age group and gender for the patients in Queensland services and at the national level. Age has been calculated as at the beginning of each episode.

**Table 17 Age group by gender**

Age group	QLD				All Services			
	Male	%	Female	%	Male	%	Female	%
< 15	2	0.1	5	0.3	31	0.3	27	0.3
15-24	4	0.2	2	0.1	14	0.1	21	0.2
25-34	9	0.4	28	1.5	66	0.6	102	1.1
35-44	39	1.7	61	3.3	210	1.9	291	3.0
45-54	143	6.1	197	10.6	697	6.4	842	8.7
55-64	392	16.8	326	17.5	1,683	15.4	1,596	16.5
65-74	735	31.5	445	23.9	3,023	27.6	2,181	22.5
75-84	691	29.6	484	26.0	3,427	31.3	2,597	26.8
85+	319	13.7	313	16.8	1,811	16.5	2,031	21.0
Not stated/inadequately described	0	0.0	0	0.0	0	0.0	1	0.0
<b>Total</b>	<b>2,334</b>	<b>100.0</b>	<b>1,861</b>	<b>100.0</b>	<b>10,962</b>	<b>100.0</b>	<b>9,689</b>	<b>100.0</b>

Note: Records where gender was not stated or inadequately described are excluded from the table.

Referral source refers to the service or organisation from which the patient was referred for each episode of care. Table 18 presents referral source by episode type. Review of referral source can identify opportunities to connect with referral sources that are currently lower than the national referral profile (e.g. a community service with few GP referrals may want to re-address referral or triage practices and look to working more collaboratively).

**Table 18 Referral source by setting**

Referral source	Inpatient				Ambulatory & community			
	QLD	%	All Services	%	QLD	%	All Services	%
Public hospital - other than inpatient palliative care unit	1,433	50.2	5,277	46.8	554	40.6	4,086	43.5
Private hospital - other than inpatient palliative care unit	376	13.2	785	7.0	75	5.5	1,134	12.1
Public palliative care inpatient unit/hospice	115	4.0	251	2.2	210	15.4	390	4.1
Private palliative care inpatient unit/hospice	49	1.7	125	1.1	41	3.0	153	1.6
General medical practitioner	158	5.5	560	5.0	198	14.5	1,375	14.6
Specialist medical practitioner	98	3.4	376	3.3	98	7.2	463	4.9
Community-based palliative care agency	301	10.6	2,432	21.6	68	5.0	118	1.3
Community-based service	44	1.5	464	4.1	41	3.0	193	2.1
Residential aged care facility	18	0.6	92	0.8	8	0.6	643	6.8
Self, carer(s), family or friends	130	4.6	288	2.6	60	4.4	274	2.9
Other	12	0.4	117	1.0	7	0.5	98	1.0
Not stated/inadequately described	118	4.1	513	4.5	6	0.4	472	5.0
<b>Total</b>	<b>2,852</b>	<b>100.0</b>	<b>11,280</b>	<b>100.0</b>	<b>1,366</b>	<b>100.0</b>	<b>9,399</b>	<b>100.0</b>

**Table 19 Place of death – ambulatory & community setting**

Place of death	QLD	%	All Services	%
Private residence	206	56.1	1,605	55.8
Residential aged care setting	24	6.5	492	17.1
Other location*	106	28.9	600	20.9
Not stated/inadequately described	31	8.4	177	6.2
<b>Total</b>	<b>367</b>	<b>100.0</b>	<b>2,874</b>	<b>100.0</b>

\* Includes patients who have died in a hospital setting without the episode of non-admitted palliative care being ended. Patients whose community episode has ended when admitted to hospital are excluded from this table.

Table 20 gives a summary of the length of episode for patients in Queensland services and nationally. Table 21 details the length of episode by setting. The length of episode is calculated as the number of days between the episode start date and the episode end date. Bereavement phases are excluded from the calculation and episodes that remain open at the end of the reporting period (and hence do not have an episode end date) are also excluded.

**Table 20 Length of episode summary by setting**

Length of episode	Inpatient		Ambulatory & community	
	QLD	All Services	QLD	All Services
Average length of episode	10.7	11.8	38.5	39.9
Median length of episode	6.0	7.0	24.0	27.0

Note: Records where length of episode was greater than 180 days were considered to be atypical and are excluded from the average calculations.

**Table 21 Length of episode by setting**

Length of episode	Inpatient				Ambulatory & community			
	QLD	%	All Services	%	QLD	%	All Services	%
Same day	80	2.9	416	3.8	200	15.8	501	5.7
1-2 days	605	21.9	2,078	18.8	54	4.3	594	6.8
3-4 days	438	15.9	1,560	14.1	43	3.4	421	4.8
5-7 days	496	18.0	1,890	17.1	79	6.2	642	7.3
8-14 days	532	19.3	2,307	20.8	131	10.4	1,016	11.6
15-21 days	255	9.2	1,167	10.5	105	8.3	760	8.7
22-30 days	158	5.7	740	6.7	84	6.6	681	7.8
31-60 days	147	5.3	701	6.3	180	14.2	1,478	16.9
61-90 days	25	0.9	135	1.2	97	7.7	777	8.9
Greater than 90 days	27	1.0	77	0.7	292	23.1	1,891	21.6
<b>Total</b>	<b>2,763</b>	<b>100.0</b>	<b>11,071</b>	<b>100.0</b>	<b>1,265</b>	<b>100.0</b>	<b>8,761</b>	<b>100.0</b>

### 4.3 Profile of palliative care phases

The palliative care phase type describes the stage of the patient's illness and provides a clinical indication of the level of care a patient requires. There are five palliative care phase types; stable, unstable, deteriorating, terminal and bereaved. The stable, unstable, deteriorating and terminal phase types can occur in any sequence and a patient may move back and forth between them.

**Table 22** Number of phases by phase type and setting

Phase type	Inpatient				Ambulatory & community			
	QLD	%	All Services	%	QLD	%	All Services	%
Stable	1,197	19.1	7,024	24.7	834	37.3	7,700	38.9
Unstable	1,591	25.4	7,528	26.5	351	15.7	2,531	12.8
Deteriorating	1,826	29.1	7,529	26.5	802	35.9	7,938	40.1
Terminal	1,042	16.6	4,767	16.8	173	7.7	1,452	7.3
Bereaved	620	9.9	1,553	5.5	73	3.3	158	0.8
All phases	6,276	100.0	28,401	100.0	2,233	100.0	19,779	100.0

**Table 23** Average phase length (in days) by phase type and setting

Phase type	Inpatient		Ambulatory & community	
	QLD	All Services	QLD	All Services
Stable	6.1	7.5	23.9	19.8
Unstable	4.1	3.1	9.6	6.9
Deteriorating	6.5	5.2	16.9	15.0
Terminal	2.2	2.1	3.6	2.9
Bereaved	1.1	1.1	1.1	2.5

Note: Phase records where phase length was greater than 90 days were considered to be atypical and are excluded from the average calculations.

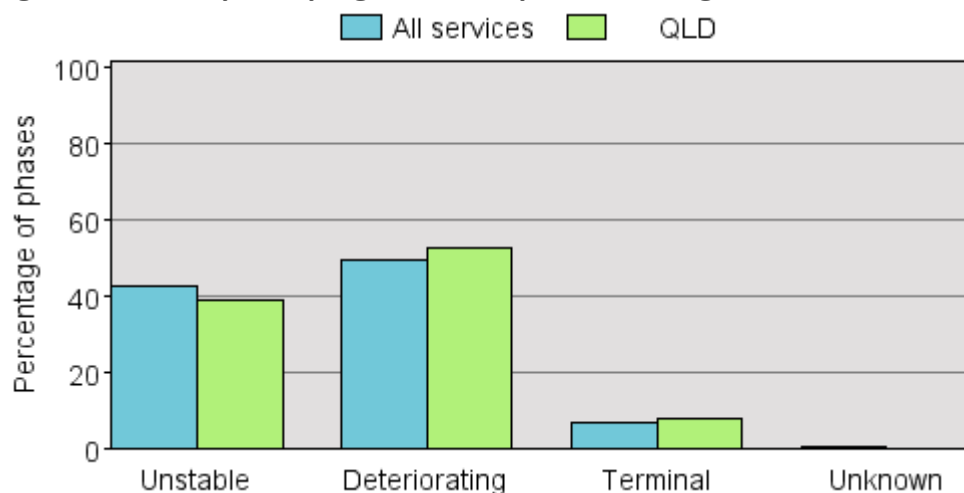
Table 24 presents information relating to the manner in which stable phases ended, both for Queensland services and nationally. A stable phase will end if a patient moves into a different phase (phase change), is discharged or dies. Figure 13 and Figure 14 summarise the movement of patients out of the stable phase for the inpatient and ambulatory and community settings. This movement from one phase to another is referred to as phase progression. The phase progression information is derived by PCOC. The “Unknown” category has been included to account for situations where subsequent phase records have not been submitted to PCOC, meaning the phase progression cannot be determined.

Similar information is presented for the unstable, deteriorating and terminal phases on the following pages.

**Table 24 How stable phases end – by setting**

Phase end reason	Inpatient				Ambulatory & community			
	QLD	%	All Services	%	QLD	%	All Services	%
Phase change (see figures below)	402	33.6	3,589	51.1	387	46.4	4,669	60.6
Discharge/case closure	775	64.7	3,170	45.1	381	45.7	2,448	31.8
Died	10	0.8	128	1.8	61	7.3	447	5.8
Bereavement phase end	0	0.0	0	0.0	0	0.0	0	0.0
Not stated/inadequately described	10	0.8	137	2.0	5	0.6	136	1.8
<b>Total</b>	<b>1,197</b>	<b>100.0</b>	<b>7,024</b>	<b>100.0</b>	<b>834</b>	<b>100.0</b>	<b>7,700</b>	<b>100.0</b>

**Figure 13 Stable phase progression – inpatient setting**



**Figure 14 Stable phase progression – ambulatory & community settings**





**Table 25 How unstable phases end – by setting**

Phase end reason	Inpatient				Ambulatory & community			
	QLD	%	All Services	%	QLD	%	All Services	%
Phase change (see figures below)	1,381	86.8	6,803	90.4	229	65.2	1,733	68.5
Discharge/case closure	164	10.3	426	5.7	101	28.8	602	23.8
Died	36	2.3	230	3.1	17	4.8	149	5.9
Bereavement phase end	0	0.0	0	0.0	0	0.0	0	0.0
Not stated/inadequately described	10	0.6	69	0.9	4	1.1	47	1.9
<b>Total</b>	<b>1,591</b>	<b>100.0</b>	<b>7,528</b>	<b>100.0</b>	<b>351</b>	<b>100.0</b>	<b>2,531</b>	<b>100.0</b>

**Figure 15 Unstable phase progression – inpatient setting**



**Figure 16 Unstable phase progression – ambulatory & community settings**



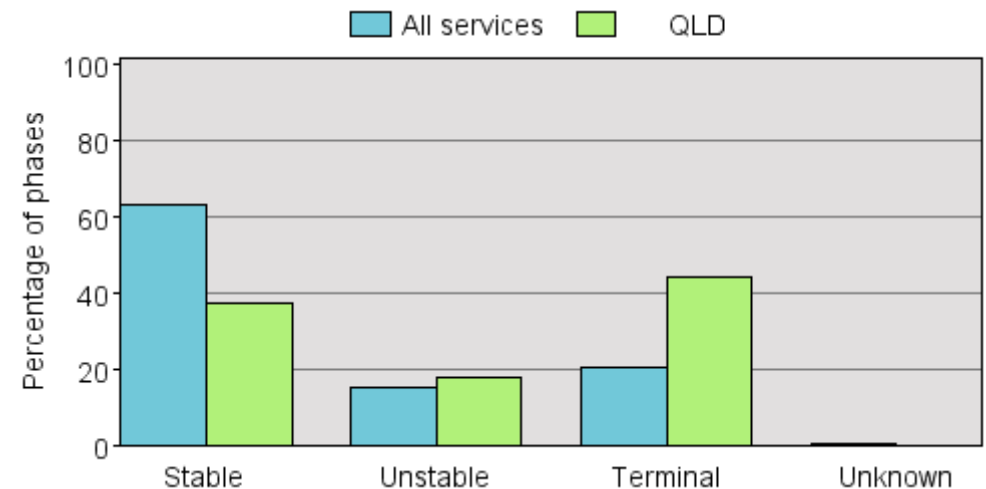
**Table 26 How *deteriorating* phases end – by setting**

Phase end reason	Inpatient				Ambulatory & community			
	QLD	%	All Services	%	QLD	%	All Services	%
Phase change (see figures below)	1,029	56.4	5,173	68.7	281	35.0	4,651	58.6
Discharge/case closure	566	31.0	1,065	14.1	384	47.9	2,202	27.7
Died	187	10.2	1,083	14.4	129	16.1	1,017	12.8
Bereavement phase end	0	0.0	0	0.0	0	0.0	0	0.0
Not stated/inadequately described	44	2.4	208	2.8	8	1.0	68	0.9
<b>Total</b>	<b>1,826</b>	<b>100.0</b>	<b>7,529</b>	<b>100.0</b>	<b>802</b>	<b>100.0</b>	<b>7,938</b>	<b>100.0</b>

**Figure 17 Deteriorating phase progression – inpatient setting**



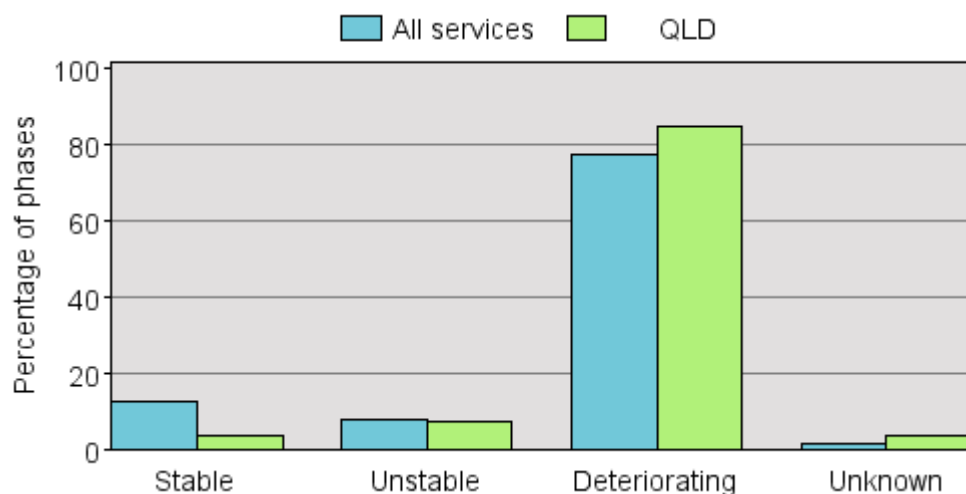
**Figure 18 Deteriorating phase progression – ambulatory & community settings**



**Table 27** How terminal phases end – by setting

Phase end reason	Inpatient				Ambulatory & community			
	QLD	%	All Services	%	QLD	%	All Services	%
Phase change (see figures below)	26	2.5	179	3.8	5	2.9	137	9.4
Discharge/case closure	24	2.3	86	1.8	14	8.1	102	7.0
Died	903	86.7	4,107	86.2	151	87.3	1,184	81.5
Bereavement phase end	0	0.0	0	0.0	0	0.0	0	0.0
Not stated/inadequately described	89	8.5	395	8.3	3	1.7	29	2.0
<b>Total</b>	<b>1,042</b>	<b>100.0</b>	<b>4,767</b>	<b>100.0</b>	<b>173</b>	<b>100.0</b>	<b>1,452</b>	<b>100.0</b>

**Figure 19** Terminal phase progression – inpatient setting



**Figure 20** Terminal phase progression – ambulatory & community settings



The Palliative Care Problem Severity Score (PCPSS) is a **‘clinician rated’ screening tool** to assess the overall severity of problems within four key palliative care domains (pain, other symptoms, psychological/spiritual and family/carer). The ratings are: 0 = absent, 1 = mild, 2 = moderate and 3 = severe. The use of this tool provides an opportunity to assist in the need or urgency of intervention e.g. a score of severe in the family/carer domain could trigger a more detailed assessment by a skilled social worker or pastoral care worker to establish appropriate treatment or intervention.

Tables 28 and 29 show the percentage scores for the inpatient and ambulatory and community settings respectively for both Queensland services and nationally.

**Table 28 Profile of PC Problem Severity scores at beginning of phase by phase type – inpatient setting (percentages)**

Phase type	Problem severity	QLD				All Services			
		Absent	Mild	Moderate	Severe	Absent	Mild	Moderate	Severe
Stable	Pain	39.9	44.1	12.9	3.1	44.0	37.5	14.8	3.8
	Other symptoms	25.1	50.4	20.4	4.1	19.0	45.2	27.6	8.2
	Psychological/spiritual	30.1	51.5	15.8	2.6	27.4	48.0	19.4	5.3
	Family/carer	36.4	40.7	18.8	4.1	36.9	39.4	17.5	6.3
Unstable	Pain	19.8	30.9	30.2	19.1	28.0	30.1	27.8	14.1
	Other symptoms	8.9	26.9	44.7	19.6	10.4	29.4	40.3	19.9
	Psychological/spiritual	14.8	36.8	35.6	12.8	18.5	40.2	29.8	11.6
	Family/carer	22.7	28.7	33.7	14.9	25.2	34.7	27.7	12.4
Deteriorating	Pain	33.4	37.3	21.1	8.1	38.4	31.8	22.1	7.6
	Other symptoms	12.2	39.3	34.7	13.8	14.3	31.7	37.5	16.5
	Psychological/spiritual	24.9	42.7	22.8	9.6	24.0	41.0	25.6	9.5
	Family/carer	21.8	36.7	26.3	15.1	27.2	34.2	26.3	12.4
Terminal	Pain	47.2	32.6	13.3	6.9	43.2	32.3	16.8	7.7
	Other symptoms	40.0	29.0	19.7	11.3	27.8	28.7	25.9	17.7
	Psychological/spiritual	49.1	28.4	14.8	7.8	42.4	30.9	17.1	9.6
	Family/carer	17.9	32.0	33.1	17.1	19.1	30.8	31.0	19.1

**Table 29 Profile of PC Problem Severity scores at beginning of phase by phase type – ambulatory and community settings (percentages)**

Phase type	Problem severity	QLD				All Services			
		Absent	Mild	Moderate	Severe	Absent	Mild	Moderate	Severe
Stable	Pain	43.9	43.3	11.3	1.6	41.6	46.5	10.7	1.2
	Other symptoms	24.7	54.3	17.1	3.8	16.5	57.3	23.5	2.8
	Psychological/spiritual	39.2	47.5	11.9	1.4	30.1	51.5	15.6	2.7
	Family/carer	38.6	42.6	16.2	2.6	32.7	44.0	18.4	5.0
Unstable	Pain	17.9	31.6	35.3	15.1	19.8	27.9	34.4	18.0
	Other symptoms	8.0	27.9	46.2	17.9	6.0	25.3	48.6	20.0
	Psychological/spiritual	17.4	42.7	31.3	8.5	13.8	39.9	35.4	10.9
	Family/carer	19.4	34.5	35.0	11.1	18.7	30.0	35.9	15.3
Deteriorating	Pain	26.4	37.9	27.6	8.1	29.9	45.3	21.3	3.5
	Other symptoms	9.0	35.8	43.3	11.9	8.7	40.3	42.9	8.1
	Psychological/spiritual	23.8	45.9	25.9	4.4	21.5	49.5	24.6	4.4
	Family/carer	19.8	39.0	34.2	7.0	24.0	38.4	30.3	7.4
Terminal	Pain	38.2	37.6	14.5	9.8	37.1	40.0	18.2	4.8
	Other symptoms	25.4	30.1	23.1	21.4	19.6	34.1	30.7	15.6
	Psychological/spiritual	42.2	32.4	19.1	6.4	43.5	32.3	18.0	6.2
	Family/carer	11.6	36.4	35.3	16.8	13.1	31.1	36.3	19.5

The Symptom Assessment Scale (SAS) is a ‘patient rated’ assessment tool capturing the patient’s level of symptom distress. It uses a visual analogue scale where 0 = no problems and 1 - 10 = level of distress, with 10 being the worst possible experience. The SAS reports on seven symptoms identified as the main cancer and palliative care problems (difficulty sleeping, appetite problems, nausea, bowel problems, breathing problems, fatigue and pain). In tables 30 and 31 on the following pages, the SAS scores are grouped into the following categories: absent (0), mild (1-3), moderate (4-7) and severe (8-10).

**Table 30 Profile of Symptom Assessment Scale scores at beginning of phase by phase type – inpatient setting (percentages)**

Phase type	Symptom distress	QLD				All Services			
		Absent	Mild	Moderate	Severe	Absent	Mild	Moderate	Severe
Stable	Insomnia	53.9	28.0	15.2	3.0	64.4	19.6	13.2	2.8
	Appetite problems	43.7	30.6	21.7	4.1	49.6	22.3	22.8	5.3
	Nausea	65.5	24.0	9.1	1.5	77.8	13.5	7.2	1.5
	Bowel problems	50.0	29.7	16.9	3.4	58.8	22.9	14.5	3.7
	Breathing problems	55.6	24.4	15.3	4.8	61.8	19.2	14.5	4.6
	Fatigue	23.5	23.1	41.7	11.7	24.3	21.1	42.9	11.7
	Pain	36.5	35.3	25.2	3.1	45.2	30.8	20.5	3.5
Unstable	Insomnia	34.3	25.7	30.2	9.9	54.8	18.2	20.8	6.2
	Appetite problems	22.9	22.5	37.4	17.2	37.8	19.8	30.3	12.1
	Nausea	45.6	22.9	22.8	8.6	66.0	14.3	14.3	5.4
	Bowel problems	33.4	23.6	32.0	11.0	49.8	21.4	21.4	7.4
	Breathing problems	37.5	22.7	29.3	10.5	51.4	19.0	20.3	9.3
	Fatigue	12.8	11.2	48.8	27.2	19.0	15.0	42.9	23.2
	Pain	18.0	23.7	36.0	22.3	31.9	25.7	29.2	13.2
Deteriorating	Insomnia	54.3	21.6	19.3	4.8	66.4	15.6	14.6	3.4
	Appetite problems	36.5	22.1	27.6	13.8	47.1	17.0	25.0	10.9
	Nausea	62.3	18.8	14.7	4.2	74.8	12.4	9.9	2.9
	Bowel problems	46.2	23.0	23.2	7.6	57.0	20.0	17.7	5.3
	Breathing problems	45.4	19.4	24.8	10.4	55.1	17.0	19.4	8.5
	Fatigue	20.1	12.0	41.8	26.1	24.7	10.6	39.3	25.3
	Pain	30.8	27.5	31.7	10.0	39.8	26.3	26.9	6.9
Terminal	Insomnia	83.0	11.1	4.5	1.4	84.1	8.0	6.2	1.7
	Appetite problems	80.9	8.2	4.9	6.0	79.0	6.4	8.2	6.4
	Nausea	85.7	9.2	4.5	0.6	89.1	6.1	3.8	1.0
	Bowel problems	75.7	11.2	9.2	3.9	75.9	11.6	9.1	3.5
	Breathing problems	59.5	14.3	17.0	9.2	60.9	13.7	16.3	9.1
	Fatigue	67.4	7.9	10.4	14.2	61.2	5.5	15.3	17.9
	Pain	52.2	26.3	16.7	4.8	53.2	23.2	18.7	4.8

**Table 31 Profile of Symptom Assessment Scale scores at beginning of phase by phase type – ambulatory and community settings (percentages)**

Phase type	Symptom distress	QLD				All Services			
		Absent	Mild	Moderate	Severe	Absent	Mild	Moderate	Severe
Stable	Insomnia	62.3	22.8	12.4	2.4	59.5	28.1	11.0	1.3
	Appetite problems	48.7	30.4	17.6	3.3	42.2	33.1	21.5	3.2
	Nausea	69.1	22.4	6.8	1.7	77.5	17.5	4.4	0.7
	Bowel problems	52.7	31.3	13.5	2.4	63.1	26.0	9.5	1.4
	Breathing problems	57.6	20.5	17.6	4.3	51.6	30.5	15.5	2.4
	Fatigue	21.4	22.0	44.5	12.2	11.3	28.7	51.5	8.5
	Pain	40.6	36.1	21.0	2.3	43.6	40.2	14.6	1.6
Unstable	Insomnia	43.3	26.8	23.6	6.3	43.3	27.4	23.7	5.5
	Appetite problems	33.0	29.1	30.2	7.7	29.3	24.2	34.7	11.8
	Nausea	55.8	20.2	17.9	6.0	59.4	18.8	15.8	6.0
	Bowel problems	43.0	28.2	22.2	6.6	51.3	25.4	17.8	5.4
	Breathing problems	47.9	28.2	17.4	6.6	47.0	25.8	21.2	5.9
	Fatigue	12.3	12.0	53.3	22.5	7.0	13.9	56.1	23.1
	Pain	15.4	26.8	41.0	16.8	19.8	24.9	37.4	17.9
Deteriorating	Insomnia	49.1	27.6	18.4	4.8	54.3	28.3	14.8	2.6
	Appetite problems	29.3	29.6	32.7	8.4	35.0	27.5	29.2	8.3
	Nausea	56.5	26.8	13.1	3.6	70.2	20.2	8.2	1.4
	Bowel problems	37.4	33.5	23.5	5.6	58.6	26.9	12.0	2.4
	Breathing problems	39.4	29.6	22.6	8.3	42.5	30.9	22.2	4.4
	Fatigue	8.9	11.1	54.3	25.7	7.5	16.7	56.8	19.0
	Pain	22.8	34.7	32.7	9.8	33.3	39.3	23.3	4.2
Terminal	Insomnia	79.5	9.9	7.0	3.5	72.4	12.8	11.2	3.7
	Appetite problems	74.9	8.2	7.0	9.9	64.7	6.1	10.2	18.9
	Nausea	83.6	11.7	4.7	0.0	85.5	8.8	4.5	1.2
	Bowel problems	70.2	16.4	11.1	2.3	72.0	16.6	8.9	2.4
	Breathing problems	53.2	17.0	21.6	8.2	49.0	21.9	21.0	8.0
	Fatigue	57.9	7.0	11.7	23.4	41.9	4.6	12.2	41.3
	Pain	49.1	26.3	17.0	7.6	42.4	33.8	20.0	3.9

The RUG-ADL consists of four items (bed mobility, toileting, transfers and eating) and assesses the level of functional dependence, based on what a person actually does, rather than what they are capable of doing. The figures on the following two pages summarise the total RUG-ADL at the beginning of each phase for inpatients and ambulatory and community patients. The total score on the RUG-ADL ranges from a minimum of 4 (lowest level of functional dependency) to a maximum of 18 (highest level of functional dependency).

The Australia-modified Karnofsky Performance Status (AKPS) is a measure of the patient’s overall performance status or ability to perform their activities of daily living. It is a single score between 0 and 100 assigned by a clinician based on observations of a patient’s ability to perform common tasks relating to activity, work and self-care. A score of 100 signifies normal physical abilities with no evidence of disease. Decreasing numbers indicate a reduced performance status. The AKPS is often used in assessment of prognosis and is applicable to both inpatient and community palliative care. Table 32 shows the data for the AKPS at phase start.

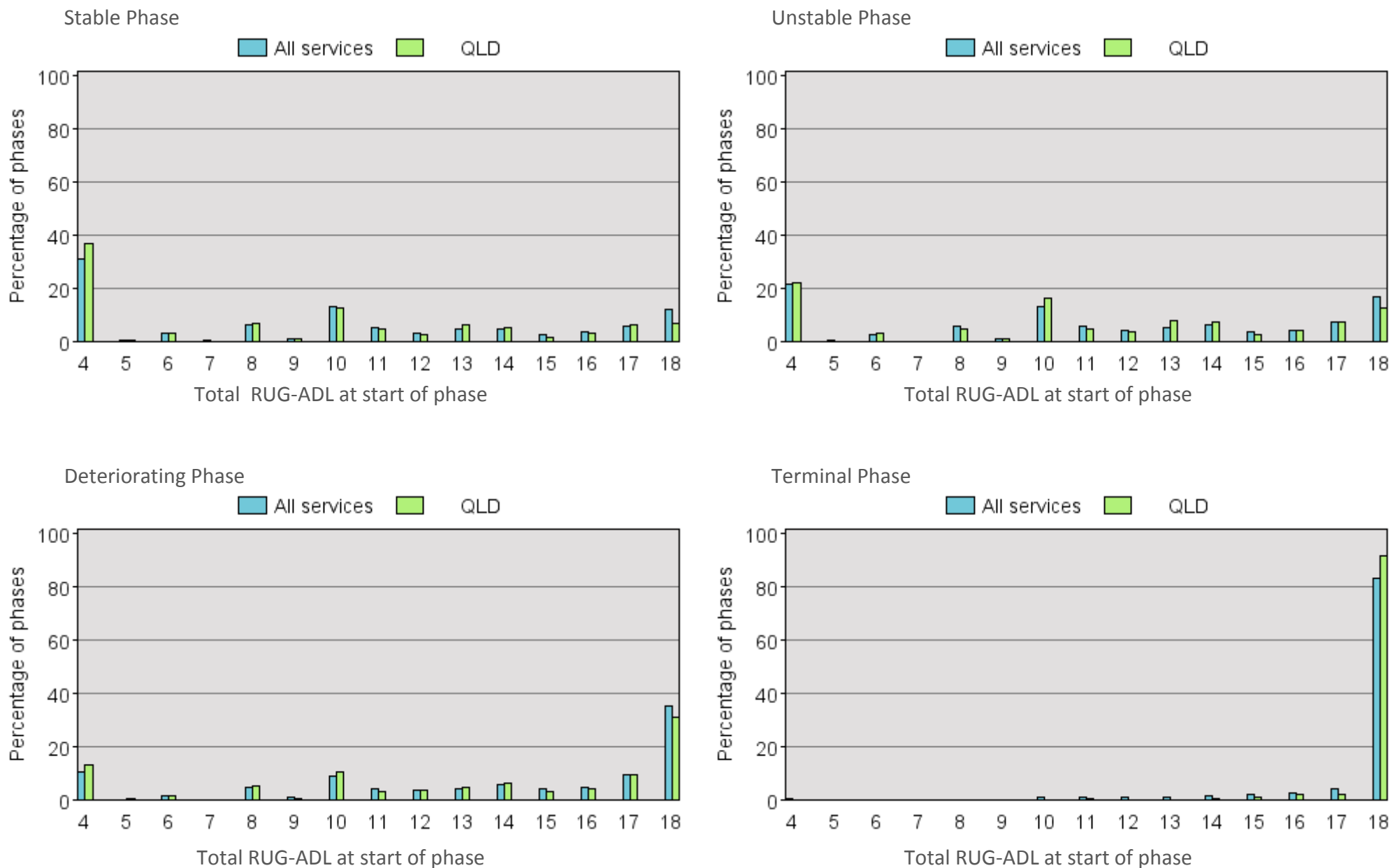
AKPS and RUG-ADL can be used together to provide a profile of both patient dependency, equipment requirements, need for allied health referrals and carer burden/respite requirements.

**Table 32 Australia-modified Karnofsky Performance Status (AKPS) at phase start by setting**

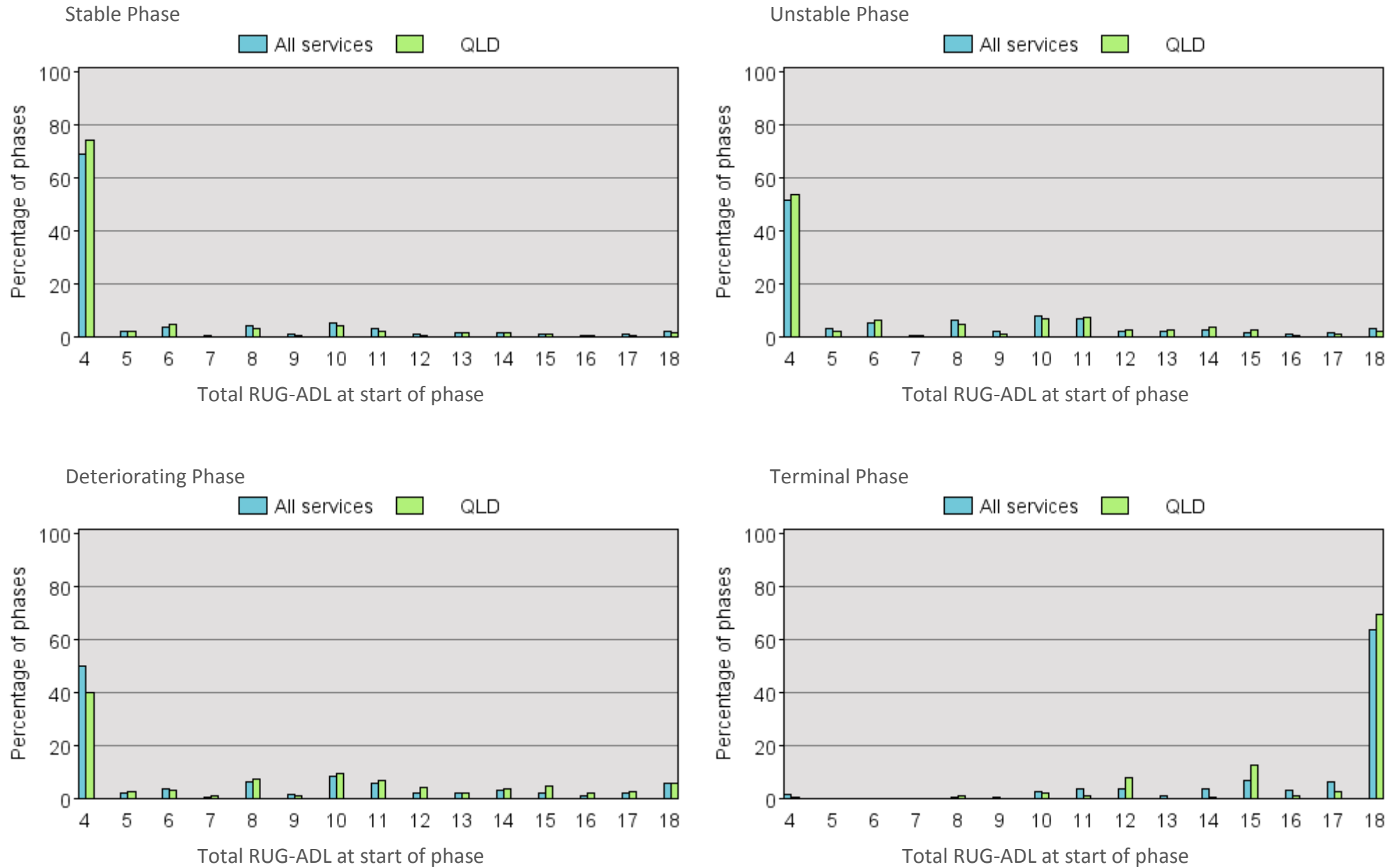
AKPS assessment	Inpatient				Ambulatory & community			
	QLD	%	All Services	%	QLD	%	All Services	%
10 - Comatose or barely rousable	677	12.0	2,581	9.7	71	3.3	607	3.1
20 - Totally bedfast and requiring extensive nursing care	1,123	19.9	5,620	21.0	173	8.0	1,588	8.1
30 - Almost completely bedfast	720	12.8	3,276	12.3	97	4.5	1,010	5.2
40 - In bed more than 50% of the time	1,081	19.2	4,702	17.6	206	9.5	1,974	10.1
50 - Requires considerable assistance	921	16.3	4,824	18.0	560	25.9	4,466	22.8
60 - Requires occasional assistance	753	13.3	3,264	12.2	609	28.2	5,217	26.6
70 - Cares for self	238	4.2	706	2.6	312	14.5	3,390	17.3
80 - Normal activity with effort	79	1.4	244	0.9	96	4.4	920	4.7
90 - Able to carry on normal activity; minor signs or symptoms	35	0.6	82	0.3	35	1.6	197	1.0
100 - Normal; no complaints; no evidence of disease	1	0.0	1	0.0	0	0.0	11	0.1
Not stated/inadequately described	15	0.3	1,438	5.4	0	0.0	227	1.2
<b>Total</b>	<b>5,643</b>	<b>100.0</b>	<b>26,738</b>	<b>100.0</b>	<b>2,159</b>	<b>100.0</b>	<b>19,607</b>	<b>100.0</b>



**Figure 21 Total RUG-ADL at beginning of phase by phase type – inpatient setting**



**Figure 22 Total RUG-ADL at beginning of phase by phase type – ambulatory & community settings**

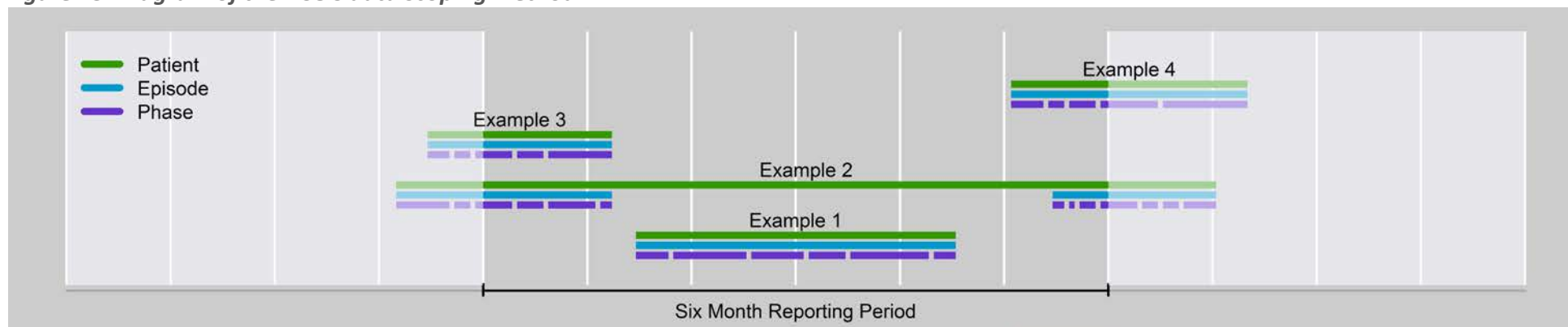


## Appendix A – Data scoping method

The method used to determine which data is included in a PCOC report looks at the phase level records first. All phase records that end within the 6 month reporting period are deemed to be “in scope” and would be included in the report. The episode and patient records associated with these phases are also deemed to be “in scope” and hence would also be included in the report.

Figure 23 below displays four examples to help visualize this process.

**Figure 23** Diagram of the PCOC data scoping method



In Example 1, the patient (represented by the green line) has one episode (represented by the blue line). This episode has six phases (represented by the purple line segments). All six phases would be included in the report as they all end within the reporting period. Hence, the episode and patient would also be in the report.

In Example 2, the patient has two episodes - the first having six phases and the second having seven phases. Looking at the phases associated with the first episode, the last four will be included in the report (as they end within the reporting period). The first two phases would have been included in the previous report. For the phases relating to the second episode, only the first three end within the reporting period, so only these would be included in the report. The following four phases would be included in the next report. Both of the episode records and the patient record would also be included in the report.

In Example 3, the patient has one episode and five phases. Only the last three phases will be included in the report as they are the only ones ending within the reporting period (the first two phases would have been included in the previous report). The episode and patient records would be included in the report.

In Example 4, the patient again has one episode and five phases. This time, only the first three phases will be included in the report (the last two phases will be included in the next report). Again, the episode and patient records would be included in the report.

## Appendix B – X-CAS technical notes

The procedure for calculating X-CAS is as follows:

- Step 1.** Using the baseline data, calculate the average change in symptom for all patients in the same phase, having the same symptom start score. This is called the **expected** change.
- Step 2.** For each individual phase, calculate the change in symptom score (start score minus end score)
- Step 3.** For each individual phase, calculate the difference between their change in symptom score (calculated in step 2) and the relevant expected change (calculated in step 1).
- Step 4.** Average all of the values calculated in step 3 to produce the service’s Symptom Casemix-Adjusted Score (e.g. PCAS).

Example:

Phase	PCPSS Pain at start	PCPSS Pain at end	Step 1: Expected PCPSS Pain change (from Report 6 National Database)	Step2: PCPSS Pain change (start score minus end score)	Step 3: Difference (Step 2 minus Step 1)	Step 4: Average of values in step 3
Stable	0	1	-0.8	-1	-0.2	$\frac{-0.2+0.9+0.4-0.4}{4} = 0.175$
Stable	1	1	-0.9	0	0.9	
Unstable	3	1	1.6	2	0.4	
Deteriorating	2	1	1.4	1	-0.4	

## Acknowledgements

*Contributions* PCOC wishes to acknowledge the valuable contribution made by:

- Members of the Management Advisory Board of PCOC
- The many staff from palliative care services who have spent considerable time collecting, collating and correcting the data and without whose effort this report would not be possible
- The PCOC National staff at the Australian Health Services Research Institute, University of Wollongong, for the collation, analysis and reporting of the data
- The PCOC Quality Improvement Facilitators for working closely with services to support the data collection and data quality improvement processes
- The Australian Government Department of Health and Ageing for funding this initiative

*Disclaimer* PCOC has made every effort to ensure that the data used in this report are accurate. Data submitted to PCOC are checked for anomalies and services are asked to re-submit data prior to the production of the PCOC report. We would advise readers to use their professional judgement in considering all information contained in this report.

*Copyright* This work is copyright. It may be produced in whole or in part for study or training purposes subject to the inclusion of an acknowledgement of the source. It is not for commercial usage or sale. Reproduction for purposes other than those above requires the written permission of PCOC.

*Suggested Citation* Allingham S., Bird S., Masso M. & Banfield M. (2013) *Patient Outcomes in Palliative Care, Report 14 (July - December 2012) – Queensland*. Palliative Care Outcomes Collaboration, Australian Health Services Research Institute, University of Wollongong