

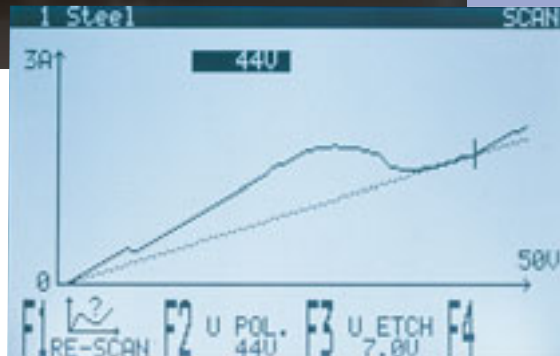
LectroPol-5

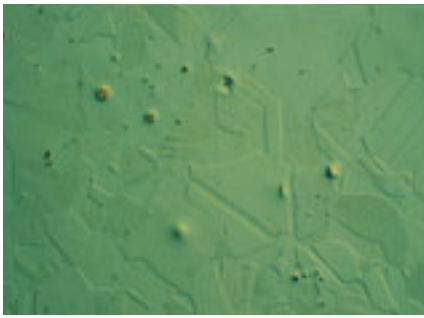


Automatic, micro-processor controlled electrolytic polishing and etching of metallographic specimens

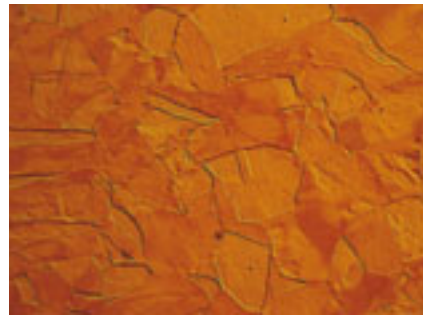


- Scanning function for easy determination of parameters
- Built-in safety features
- Database with methods for various materials
- Short polishing times and maximum reproducibility





Stainless Steel,
500x, DIC

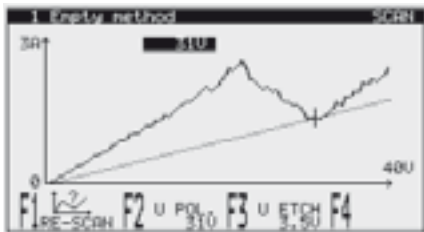


Copper,
500x, DIC

Scanning function for easy determination of parameters

LectroPol-5 is equipped with a unique scanning function. The sample is placed on the polishing table and a pre-defined voltage range is scanned to determine the current density curve.

This curve is used to define the correct voltage for both polishing and etching.



Instead of time consuming trial and error testing of parameters it is now easy to find the correct settings after a single scan of a new sample material.

Electrolytic polishing has now lost a lot of its "mystery" and is used in a more scientific way to prepare metallographic samples.

With a special interface kit LectroPol-5 can be connected to a PC, and all the scans can be transmitted, compared and saved.

Built-in safety features

With LectroPol-5, all functions are controlled through the advanced software. An increase in electrolyte temperature above a pre-defined limit will automatically result in either a warning or shut-down of the procedure in progress.

Also voltage and current are monitored constantly and if the limits of Lectro-Pol-5 are reached, settings are reduced automatically.

Thus maximum safety for both operator and equipment is provided.

Database with methods for various materials

10 polishing/etching methods for various materials are included with LectroPol-5. A whole range of materials can thus be prepared immediately, without any lengthy and time consuming trials. These methods can also be used as starting point for the development of methods for other materials. 20 user-defined methods can also be saved in the database of LectroPol-5.

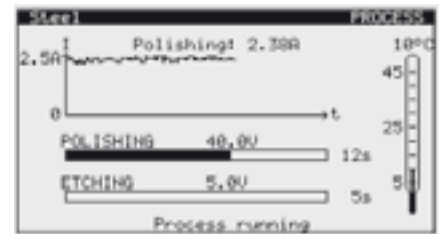
Short polishing times and maximum reproducibility

Electrolytic polishing and etching have the advantage of very short preparation times compared to normal mechanical specimen preparation. Microprocessor control and database functions result in always the exact same parameters being used. LectroPol-5 combines both short preparation times and high reproducibility and is thus the ideal choice for fast quality control requirements.

LectroPol-5 consists of two separate units, the control unit and the polishing unit.

The control unit

Both the power supply and the programming and monitoring functions are incorporated in the control unit. The unit is operated on the touch pad and on the backlit graphic display all parameters are presented. Upon

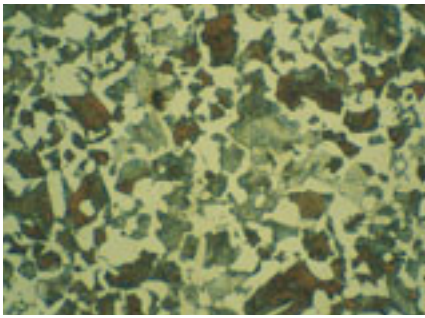


pressing the Start button, the display changes, and the ongoing process can be monitored. Parameters like current, electrolyte temperature and elapsed polishing/etching time are displayed. Both the display of parameters before and the display of actual values after process start provide an exceptional amount of immediately useable information. Deviations from one process to the next can be detected straightaway, and necessary measures can be taken. Required changing of electrolyte can be detected before changes of the polishing result will be noticed.

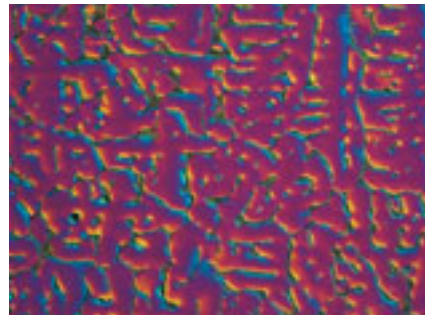
The polishing unit

The design as a separate unit makes it possible to place the polishing unit away from the control unit. If required the polishing unit can be set up in a fume cabinet while the control unit is set up outside. With an additional start and stop key the process can also be started directly from the polishing unit. The electrolyte is stored in easily exchangeable electrolyte containers which are inserted into the polishing unit.

The pump, driven like a magnetic stirrer, and the cooling coils are lowered into the container. On the polishing table the sample is positioned and electric contact is established through the anode arm. Two different polishing units are available.



Medium
Carbon Steel,
500x



Aluminium
alloy cast,
200x, DIC

With advanced cooling control

LectroPol-5 is equipped with a built-in measuring and control system, constantly monitoring the electrolyte temperature. As soon as a pre-set temperature is reached, a solenoid valve in the polishing table is activated, allowing water from the water mains or liquid from an external cooling unit to run through the cooling coil in the electrolyte container. This saves precious resources as the flow of cooling water is limited to the periods where the electrolyte temperature is above a pre-set limit.

If no water or cooling unit is connected, or the electrolyte temperature for some other reasons increases further, a warning can be displayed and eventually LectroPol-5 will shut off the process automatically.

For polishing at sub-zero temperatures

With this unit, the stainless steel cooling coils are led directly to the back of the polishing unit. There they can be connected to an external cooling unit. The external cooling unit takes over the temperature control and regulation of the electrolyte. With this set-up, materials can be polished at sub-zero temperatures.

External etching

LectroPol-5 is also prepared for external etching. This is often used when different electrolytes have to be used

for polishing and etching. Also with external etching a time can be set, and LectroPol-5 will automatically detect when the specimen is lowered into the external etching bowl. Then the countdown is running, and the voltage is terminated when the pre-set time has expired.

Accessories

Apart from the standard equipment, we can offer additional accessories for special applications.

PC-Interface

With this interface LectroPol-5 can be operated from a PC. The scans can be transferred into a spread sheet and compared and saved. This allows for the comparison of the behaviour of

different materials or tracking the ageing of electrolytes. It is also possible to save different methodscreens as bitmaps.

Switchbox

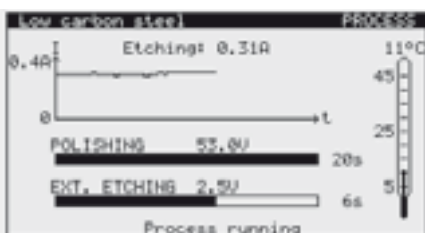
To avoid the constant cleaning when changing between different electrolytes, LectroPol-5 can be equipped with two polishing tables and a switchbox to change between these two tables.

Extension arm

For the preparation of high specimens an extension arm can be mounted.



The transparent masks facilitate monitoring the electrolyte level and the adjustment of the electrolyte flow.



Technical Data

Power Supply

50/60Hz (max. load 9.8A)	1 x 100V / 120V
50/60Hz (max. load 4.9A)	1 x 220V / 240V

Output voltage/current

Polishing	0 - 100V	(1V steps) / 6A
Etching	0 - 25V	(0.5 V steps) / 6A
External Etching	0 - 15V	(0.5 V steps) / 1.5A

Software and Electronics

Display	128 x 240 dots (16 x 40 characters)	
Controls	Touch pad	
Database	10 Struers methods + 20 user definable methods (non volatile)	

Dimensions and Weight

	Control unit	Polishing unit
Width	385 mm / 15.2"	220 mm / 8.7"
Depth	350 mm / 13.8"	350 mm / 13.8"
Height	160 mm / 6.3"	160 mm / 6.3"
Weight	18 kg / 40 lbs	6.3 kg / 14 lbs

Specifications

LectroPol-5

Fully automatic, microprocessor controlled electrolytic polishing and etching apparatus. Complete with control unit, polishing unit (LECTA) and external etching unit (LECED). One set of masks (LECMA) and two electrolyte containers (LECON) included.

Control unit with external etching device

Polishing unit with one set of masks (LECMA) and two electrolyte containers (LECON)

Polishing unit for polishing at sub-zero temperatures, with one set of masks (LECMA) and two electrolyte containers (LECON)

Switchbox for the connection of two polishing units to a LectroPol-5 Control Unit.

Connection kit for data transfer between LectroPol-5 and a PC, until serial no.4930221

Connection print for data transfer between LectroPol-5 and a PC, from serial no.4930222

Extension Arm, for the preparation of specimens up to 100 mm high. Can be mounted on pol. unit LECOL and on pol. unit LECTA from serial no. 4935250

1 set of masks (0,5, 1, 2, 5 cm² and 1 without aperture.)

1 set of 5 masks 0,5 cm²

1 set of 5 masks 1 cm²

1 set of 5 masks 2 cm²

1 set of 5 masks 5 cm²

1 set of 5 masks without aperture

Electrolyte container with lid

External etching unit

Code

LECFI

LECONP

LECTA

LECOL

LECBO

LECPO

LEPCP

LECAR

LECMA

LECHA

LECNE

LECTO

LECVE

LECNO

LECON

LECED

List of Electrolytes

A2	A3	A8	AC2	D2	E5
Aluminium	Martensitic Steel	Chromium	Cast Iron	Brass	Brass
Iron	Molybdenum	Hafnium	Magnesium	Copper	Bronze
Nickel	Stainless Steel	Nickel	Nickel	Gold	Carbon Steel
Silver	Titanium	Titanium	Stainless Steel		Cast Iron
Stainless Steel	Vanadium		Steels		Materials with strongly varying structural elements
Steels	Zirconium				
Tin					
Titanium					

Struers' equipment is in conformity with the provisions of the applicable International Directives and their appurtenant Standards. (Please contact your local supplier for details)

Struers' products are subject to constant product development. Therefore, we reserve ourselves the right to introduce changes in our products without notice.



USA and CANADA

Struers Inc.
24766 Detroit Road
Westlake, OH 44145-1598
Phone +1 440 871 0071
Fax +1 440 871 8188
info@struers.com

SWEDEN

Struers A/S
Smältvägen 1
P.O. Box 11085
SE-161 11 Bromma
Telefon +46 (0)8 447 53 90
Telefax +46 (0)8 447 53 99
info@struers.dk

FRANCE

Struers S.A.S.
370, rue du Marché Rollay
F- 94507 Champigny
sur Marne Cedex
Téléphone +33 1 5509 1430
Télécopie +33 1 5509 1449
struers@struers.fr

NEDERLAND/BELGIE

Struers GmbH Nederland
Electraweg 5
NL-3144 CB Maassluis
Tel. +31 (0) 10 599 72 09
Fax +31 (0) 10 599 72 01
glen.van.vugt@struers.de

BELGIQUE (Wallonie)

Struers S.A.S.
370, rue du Marché Rollay
F- 94507 Champigny
sur Marne Cedex
Téléphone +33 1 5509 1430
Télécopie +33 1 5509 1449
struers@struers.fr

UNITED KINGDOM

Struers Ltd.
Unit 25a
Monkspath Business Park
Solihull
B90 4NZ
Phone +44 0121 745 8200
Fax +44 0121 733 6450
info@struers.co.uk

JAPAN

Marumoto Struers K.K.
Takara 3rd Building
18-6, Higashi Ueno 1-chome
Taito-ku, Tokyo 110-0015
Phone +81 3 5688 2914
Fax +81 3 5688 2927
struers@struers.co.jp

CHINA

Struers Ltd.
Office 702 Hi-Shanghai
No. 970 Dalian Road
Shanghai 200092, P.R. China
Phone +86 (21) 5228 8811
Fax +86 (21) 5228 8821
struers.cn@struers.dk

Struers A/S

Pederstrupvej 84
DK-2750 Ballerup, Denmark
Phone +45 44 600 800
Fax +45 44 600 801
struers@struers.dk

DEUTSCHLAND

Struers GmbH
Karl-Arnold-Strasse 13 B
D-47877 Willich
Telefon +49(02154) 486-0
Telefax +49(02154) 486-222
verkauf.struers@struers.de

ÖSTERREICH

Struers GmbH
Zweigniederlassung Österreich
Ginzkeyplatz 10
A-5020 Salzburg
Telefon +43 662 625 711
Telefax +43 662 625 711 78
stefan.lintschinger@struers.de

SCHWEIZ

Struers GmbH
Zweigniederlassung Schweiz
Weissenbrunnstrasse 41
CH-8903 Birnsdorf
Telefon +41 44 777 63 07
Telefax +41 44 777 63 09
rudolf.weber@struers.de

CZECH REPUBLIC

Struers GmbH
Organizační složka
Havlíčková 361
CZ-252 63 Rostoky u Prahy
Tel: +420 233 312 625
Fax: +420 233 312 640
david.cernicky@struers.de

POLAND

Struers Sp. z o.o.
Oddział w Polsce
ul. Lirowa 27
PL-02-387 Warszawa
Tel. +48 22 824 52 80
Fax +48 22 882 06 43
grzegorz.uszynski@struers.de

HUNGARY

Struers GmbH
Magyarországi fióktelep
Puskás Tivadar u. 4
H-2040 Budaörs
Phone +36 (23) 428-742
Fax +36 (23) 428-741
zoltan.kiss@struers.de

SINGAPORE

Struers A/S
10 Eunoss Road 8,
#12-06 North Lobby
Singapore Post Centre
Singapore 408600
Phone +65 6299 2268
Fax +65 6299 2661
struers.sg@struers.dk